

# Readington Middle School Stormwater Basin Renovation



PRESENTATION TO READINGTON TOWNSHIP  
BOARD OF EDUCATION  
DECEMBER 12 2017

READINGTON TOWNSHIP ENVIRONMENTAL  
COMMISSION  
AND  
PRINCETON HYDRO, LLC

# Project Overview

- Funding provided by NJDEP 319(h) program
- Grant recipient - Readington Environmental Commission
- Grant administration – Readington Township
- Project consultant – Princeton Hydro, LLC
- Scope of project
  - Modify existing basin to increase pollutant removal and decrease downstream runoff volume
- Cost to BOE - nothing

# Project Overview

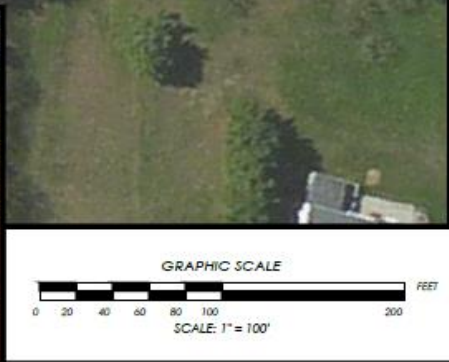
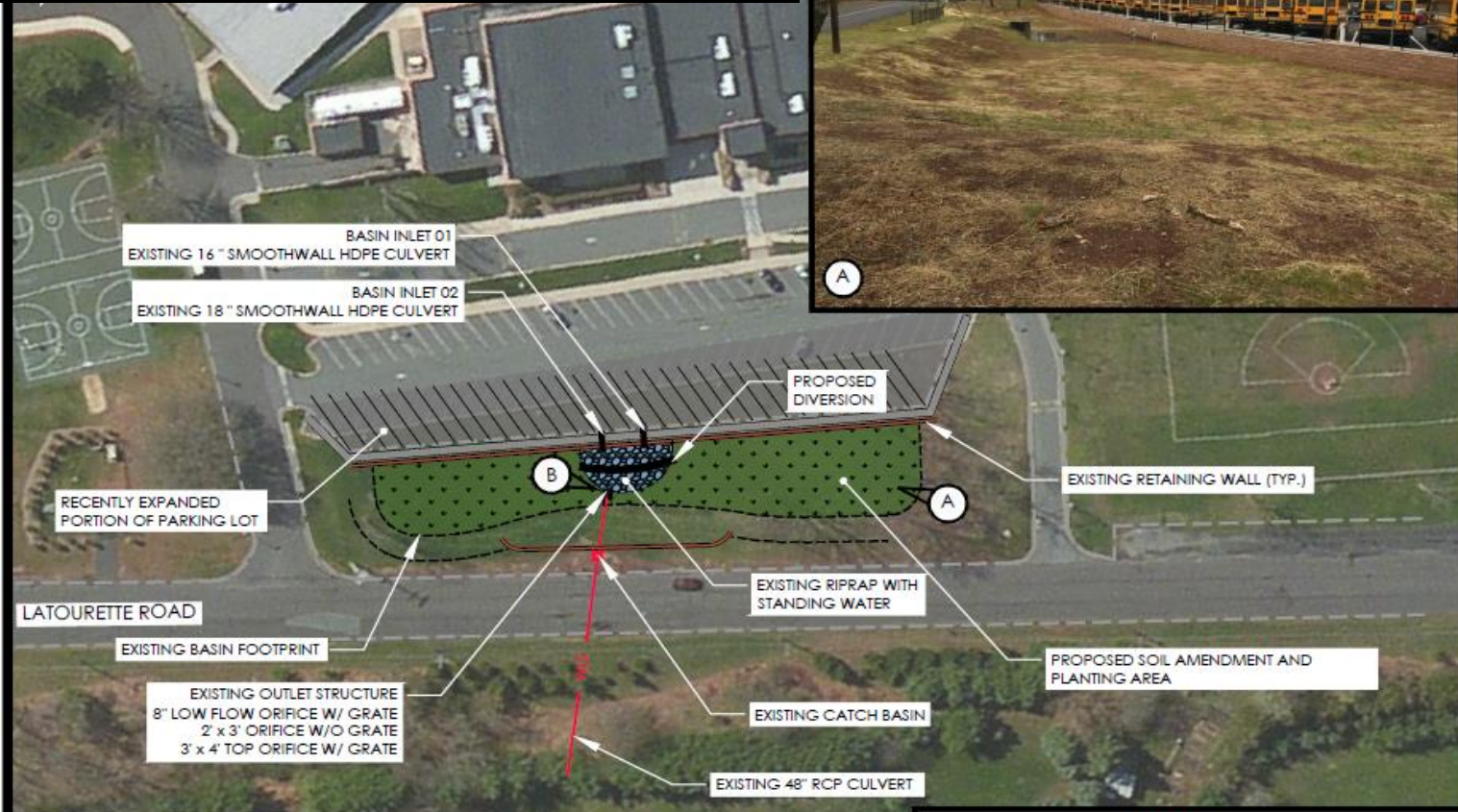
- Primary changes to existing basin –
  - Renovate soils to increase recharge
  - Replant with native deep rooted vegetation to increase pollutant removal
- Basin dimensions remain unchanged, no changes to stormwater collection system
- Project initiation – Spring 2018
- Time to complete – 2-3 weeks

# Existing Conditions



Compacted soils  
Shallow rooted  
vegetation

# Concept Overview



**LEGEND**

- LIMIT OF EXISTING DETENTION BASIN
- 36" — EXISTING CULVERT
- EXISTING EDGE OF PAVEMENT
- ===== EXISTING RETAINING WALL
- [Green area with arrows] PROPOSED SOIL AMENDMENT AND PLANTING AREA
- [Blue area with circles] EXISTING RIPRAP WITH STANDING WATER

**CALL BEFORE YOU DIG!**  
 NEW JERSEY LAW REQUIRES  
 3 WORKING DAYS NOTICE FOR  
 CONSTRUCTION PHASE AND 10 WORKING  
 DAYS IN DESIGN STAGE - STOP CALL  
 NEW JERSEY ONE CALL SYSTEM, INC.  
 REFERENCE NEW JERSEY TITLE 48, CHPT. 2, ARTICLE 9  
 1-800-272-1000

STATE OF NEW JERSEY CERTIFICATE OF AUTH. NO.: 24GA27976800

- PROJECT NOTES**
- PLEASE REFER TO PRINCETON HYDRO MEMORANDUM DATED 02/15/2017 FOR ADDITIONAL INFORMATION.
  - SITE ASSESSMENT COMPLETED 01/27/2017 BY PRINCETON HYDRO STAFF FOR DEVELOPMENT OF CONCEPT PLAN.

DATE	DESCRIPTION
REVISIONS	

**CONCEPT**

DATE \_\_\_\_\_



SCIENTISTS AND ENGINEERS  
 1108 OLD YORK ROAD, SUITE 1  
 P.O. BOX 720  
 RINGOES, NEW JERSEY 08551  
 PHONE: 908.237.5660  
 FAX: 908.237.5666  
 WWW.PRINCETONHYDRO.COM

**PROJECT NAME/LOCATION:**  
 READINGTON MIDDLE SCHOOL  
 DETENTION BASIN RETROFIT  
 READINGTON TOWNSHIP, HUNTERDON  
 COUNTY, NEWJERSEY 08889

**DRAWING NAME:**  
 EXISTING CONDITIONS AND  
 PROPOSED CONDITIONS  
 CONCEPT PLAN

DATE:	02/03/2017
PROJECT NO.:	0160.100
SCALE:	1" = 100'
DRAWN BY:	EPD
CHECKED BY:	AEM / MPG

SHEET NO.  
1 OF 1

# Limits of Disturbance



All work outside of parking lot  
Access from roadway

# Rendering of Post-Renovated Basin



# Educational Signage

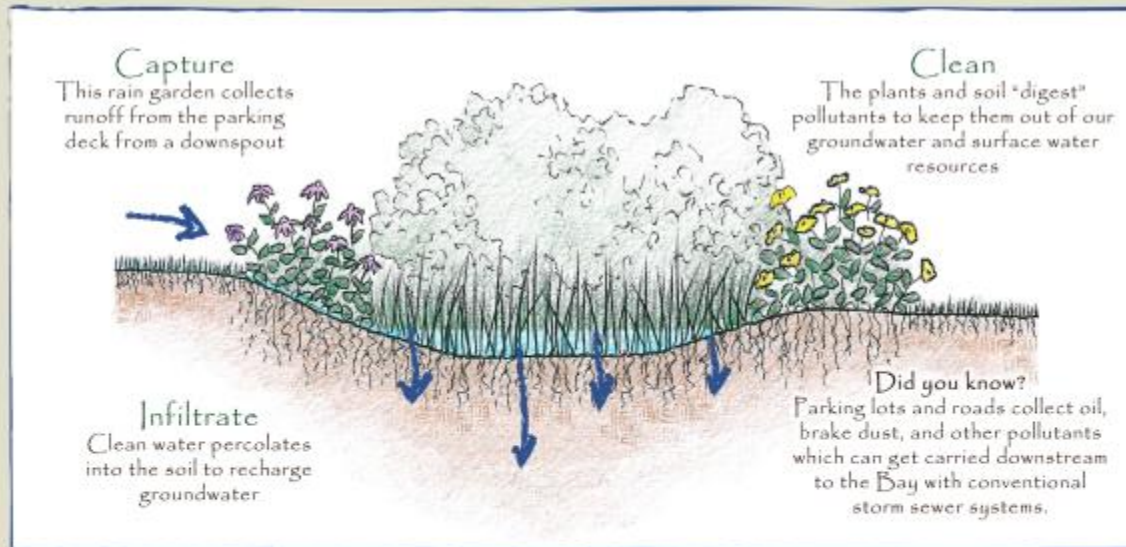
## Community Medical Center Rain Garden

Presented by the  
American Littoral Society  
and Partners

### Runoff Matters

Stormwater runoff is a leading cause of pollution in Barnegat Bay. Impervious surfaces like roads and parking areas prevent rain from being naturally filtered by the soil. Lawns can also become compacted, preventing groundwater recharge and sending polluted runoff to our streams and, ultimately, the Bay.

This rain garden is designed to capture, clean and infiltrate stormwater from the parking deck. Native plantings help treat pollution while providing habitat for wildlife.



### Create a Rain Garden at Home

Creating your own rain garden is easy. Rain gardens help reduce runoff by collecting rain from a downspout or driveway.

Native plants are perfect for the job, and there are many beautiful native flowering perennials and shrubs available.

This garden features:



Orange Coneflower



New England Aster



Joe Pye Weed



Foxglove Beardtongue



Goldenrod



Beebalm

Brought to you by  
American Littoral Society



With Assistance from:  
Ocean County, New Jersey  
Ocean County Soil Conservation District  
Jacques Cousteau National Estuarine Research Reserve



Special Thanks to:  
Community Medical Center  
Barnabas Health



Funded by a Section 519(b) Nonpoint  
Source Pollution Control Grant from the

State of New Jersey  
DEPARTMENT OF  
ENVIRONMENTAL  
PROTECTION



Illustrations by: Eileen Kennedy & Lauren Kovacs

For more information, check out Bayscape for Barnegat Bay provided by the American Littoral Society at [www.littoralsociety.org](http://www.littoralsociety.org)



# Student Participation



Toms River High School North

East Amwell Clawson  
Park



# Similar Project DRBC Headquarters Ewing

