

The COVID-19 Crisis: Impact on Schools and Locating More Information

Jonathan Hart, Ph.D.
Superintendent of Schools



Our Talking Points

Where can parents find information?

What are the successes we've seen in schools?

How does contact tracing work?

What does the Dashboard and COVID Activity Report tell me, in detail?



Information: Where can I find it?

Our district website (main page)

Superintendent's Corner

COVID 19 Update Video

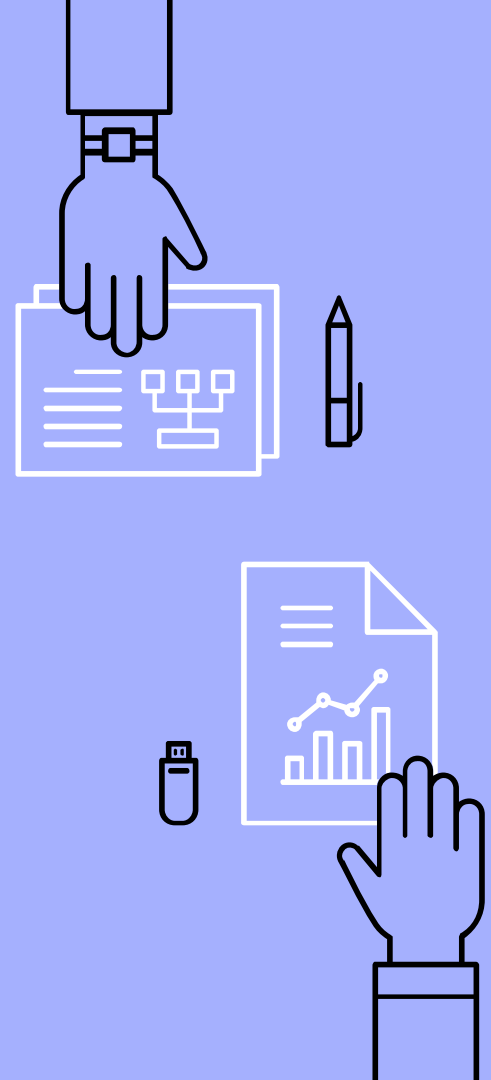
<https://www.youtube.com/watch?v=64ufH9LmozQ&t=257s>

NJ Department of Health Dashboard

https://www.nj.gov/health/cd/topics/covid2019_dashboard.shtml

COVID-19 Activity Reports

<https://www.nj.gov/health/cd/statistics/covid/>



Success for Schools

Low levels of transmission statewide

Statewide there were 66 school outbreaks, 1 from Hunterdon County

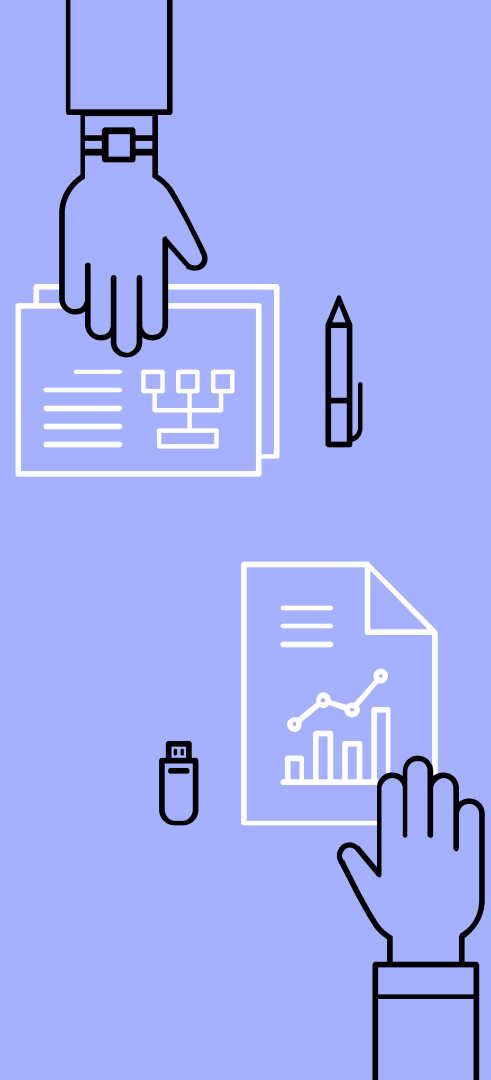
Social distancing and wearing a mask work to prevent transmission

Enhanced cleaning protocols ensure surfaces are 'germ' free

Our *Readington Ready* Plan

Consultation and communication with the Health Department

- ▶ Weekly Superintendent calls
- ▶ Nurse contact to DOH nurses

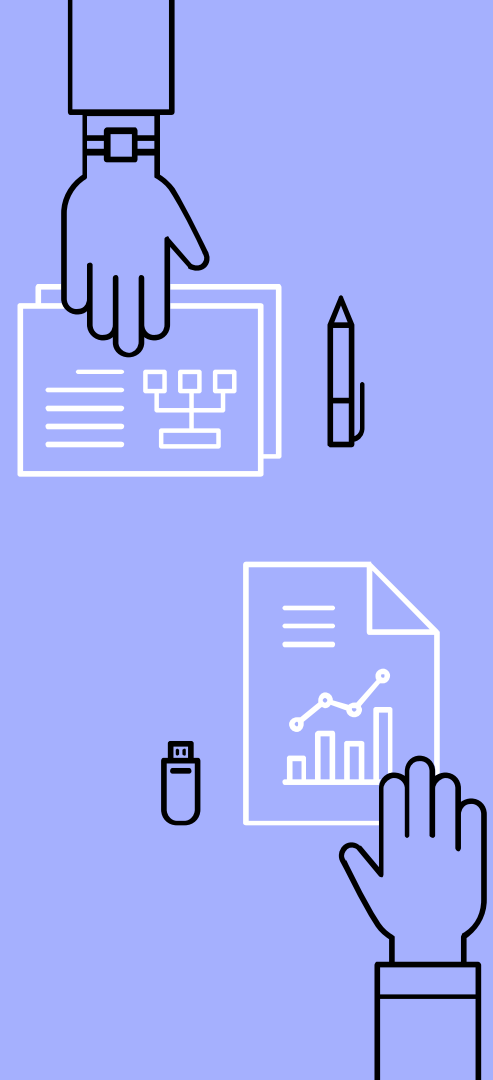


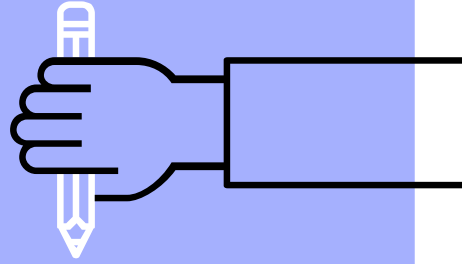
Contact Tracing

Notification comes from parents or from the DOH

Our response to identify close contacts:

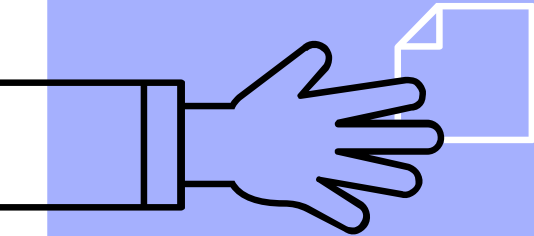
- ▶ Gather class seating charts
- ▶ Gather bus seating charts
- ▶ Review the student(s) schedule and interview teachers
- ▶ Review the restroom sign-out log
- ▶ Interview the positive student(s) or parent(s) (DOH responsibility)
- ▶ Gather all data and report to the DOH





1.

The Dashboard



What does the dashboard
tell me? I thought that was
the thing in my car.

Dashboard

Cases and Trends
"Tab" shows:

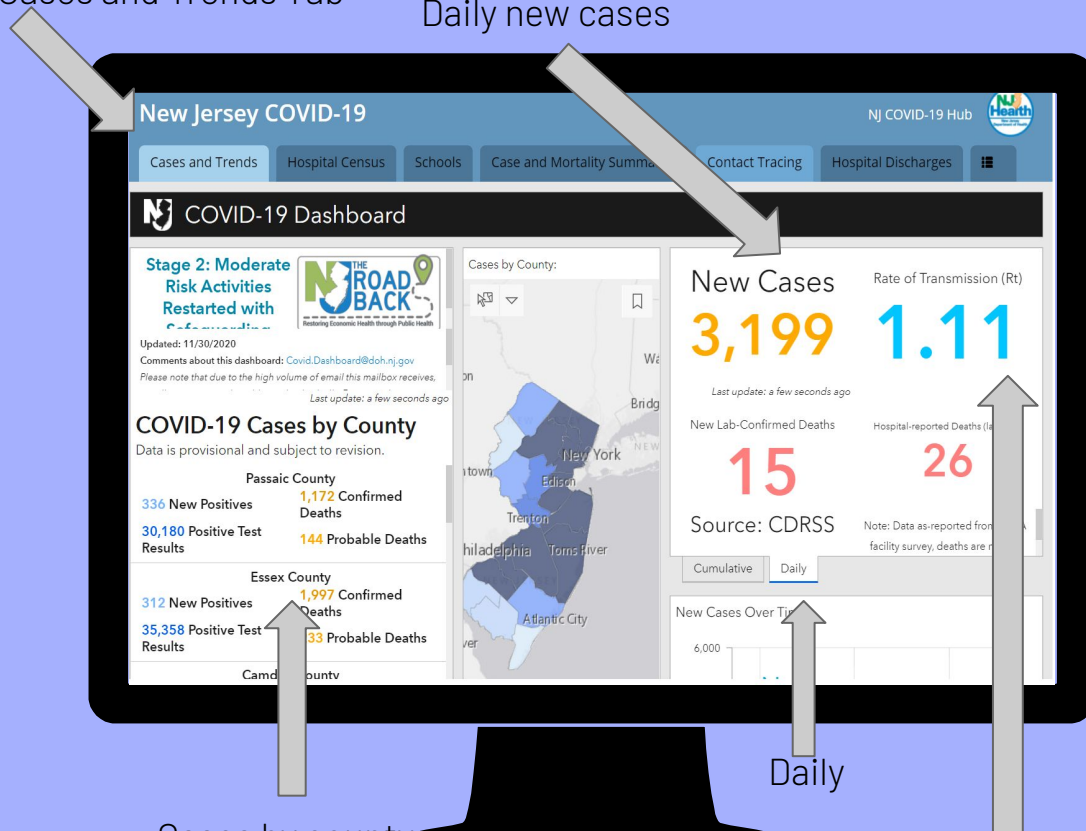
Daily new cases
statewide

Cases by county

Transmission rate

Cases and Trends Tab

Daily new cases



Cases by county

Daily

Transmission Rate

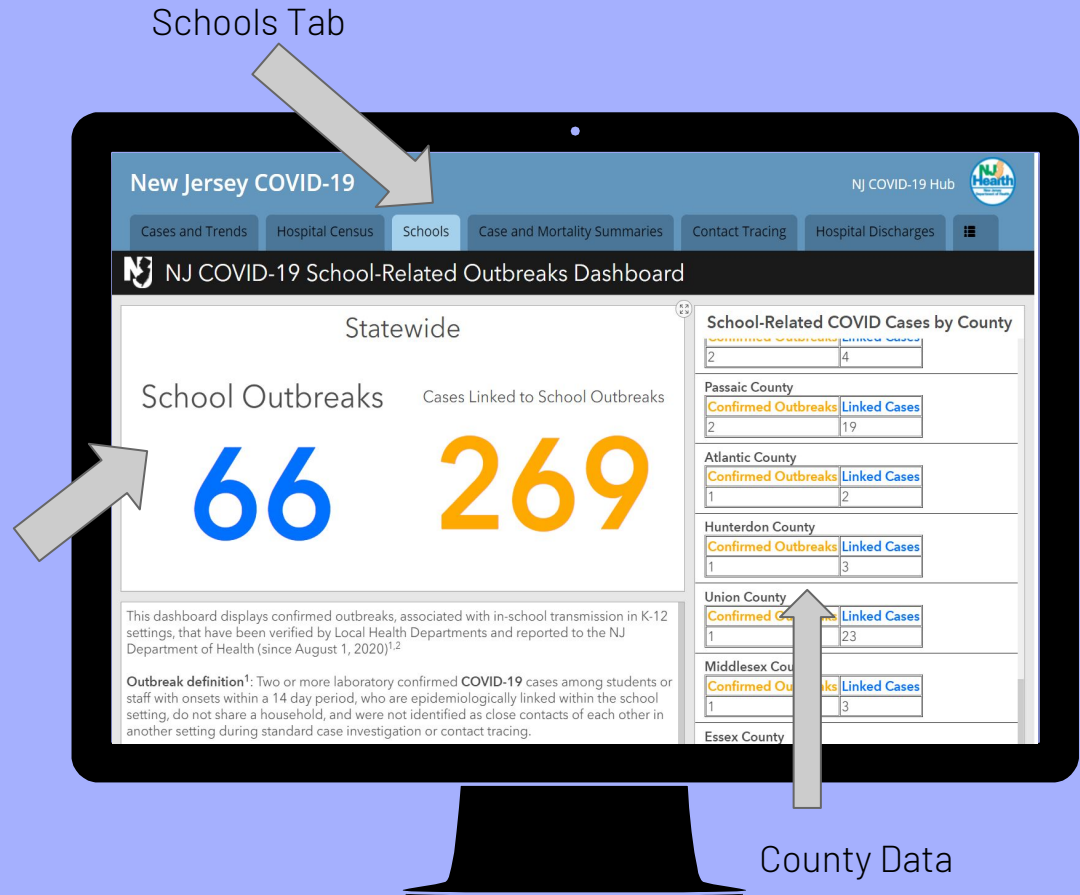
Dashboard

Schools "Tab"
shows:

School outbreaks
statewide

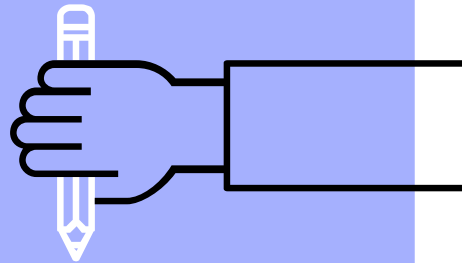
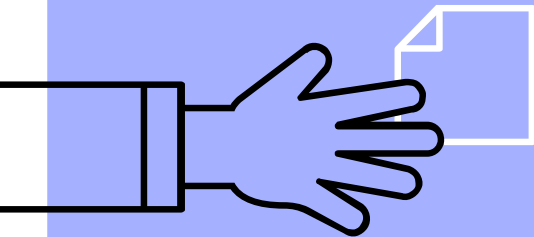
School outbreaks by
county

Cases linked to
schools



2. The COVID-19 Activity Report

What is Dr. Hart talking
about? Why is it important?



NJ DOH

It is a weekly report that monitors the COVID-19 Activity Level Index (CALI)

<https://www.nj.gov/health/cd/statistics/covid/>



STATE OF NEW JERSEY
DEPARTMENT OF HEALTH

Governor Phil Murphy · Lt. Governor Sheila Oliver
NJ Home | Services A to Z | Departments/Agencies | FAQs

Search

How do I...?



Improving Health Through Leadership and Innovation

About Us

Your Health

Healthcare Facilities & Services

Public Health

Chief State Medical Examiner

Communicable Disease Service

Home

Diseases & Health Topics A-Z List

Disease Reporting

Immunization Requirements

Education & Training

Statistics, Reports & Publications

Forms

Home · Statistics, Reports & Publications · COVID-19 Weekly CALI Reports · COVID-19 Activity Level Index (CALI) Weekly Reports

Statistics, Reports & Publications

COVID-19 Weekly CALI Reports

Influenza-like Illness Weekly Reports

Vector-borne Surveillance Reports

Reportable Disease Statistics

Animal Rabies Statistics

Immunization Status/Exemption Reports

Publications

COVID-19 Activity Level Index (CALI) Weekly Reports

The COVID-19 Weekly Activity Report provides data on COVID-19 transmission risk by six regions. This report is posted on Thursdays and uses Morbidity and Mortality Weekly Report (MMWR) dates, which are from Sunday to Saturday. MMWR dates are commonly used by the Centers for Disease Control and Prevention (CDC) to standardize weekly reporting across years.

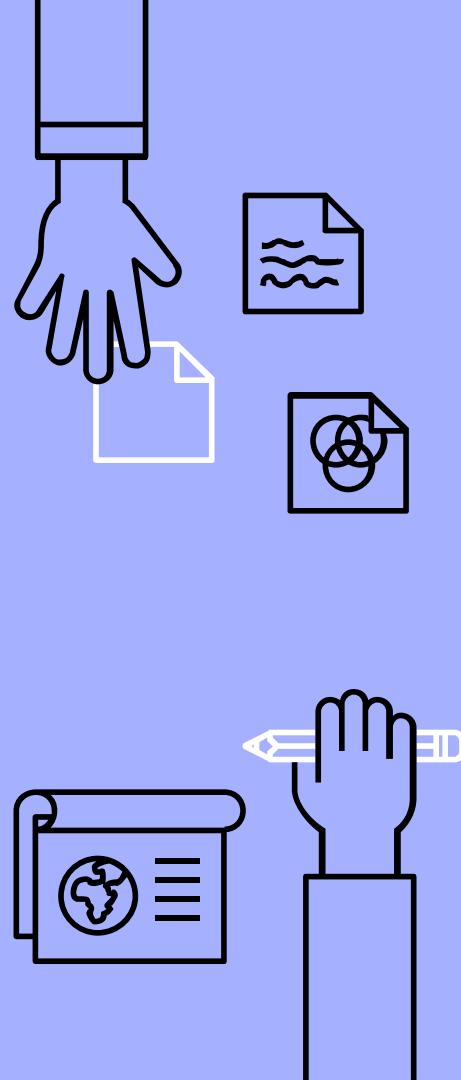
Weekly COVID-19 Activity Reports 2020-2021

- COVID-19 Activity Report Week 47 (MMWR week ending November 21, 2020)
- COVID-19 Activity Report Week 46 (MMWR week ending November 14, 2020)
- COVID-19 Activity Report Week 45 (MMWR week ending November 7, 2020)
- COVID-19 Activity Report Week 44 (MMWR week ending October 31, 2020)
- COVID-19 Activity Report Week 43 (MMWR week ending October 24, 2020)
- COVID-19 Activity Report Week 42 (MMWR week ending October 17, 2020)
- COVID-19 Activity Report Week 41 (MMWR week ending October 10, 2020)
- COVID-19 Activity Report Week 40 (MMWR week ending October 3, 2020)
- COVID-19 Activity Report Week 39 (MMWR week ending September 26, 2020)
- COVID-19 Activity Report Week 38 (MMWR week ending September 19, 2020)
- COVID-19 Activity Report Week 37 (MMWR week ending September 12, 2020)
- COVID-19 Activity Report Week 36 (MMWR week ending September 5, 2020)
- COVID-19 Activity Report Week 35 (MMWR week ending August 29, 2020)
- COVID-19 Activity Report Week 34 (MMWR week ending August 22, 2020)
- COVID-19 Activity Report Week 33 (MMWR week ending August 15, 2020)
- COVID-19 Activity Report Week 32 (MMWR week ending August 8, 2020)

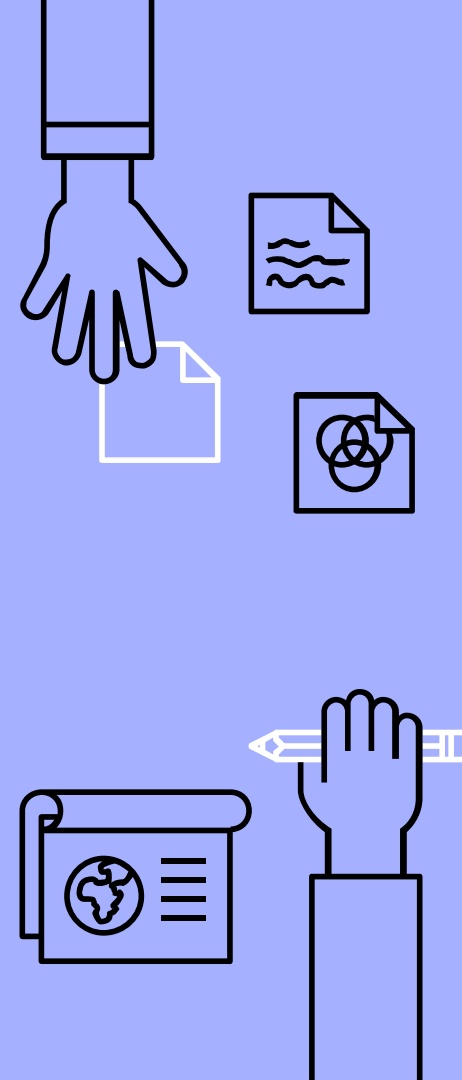
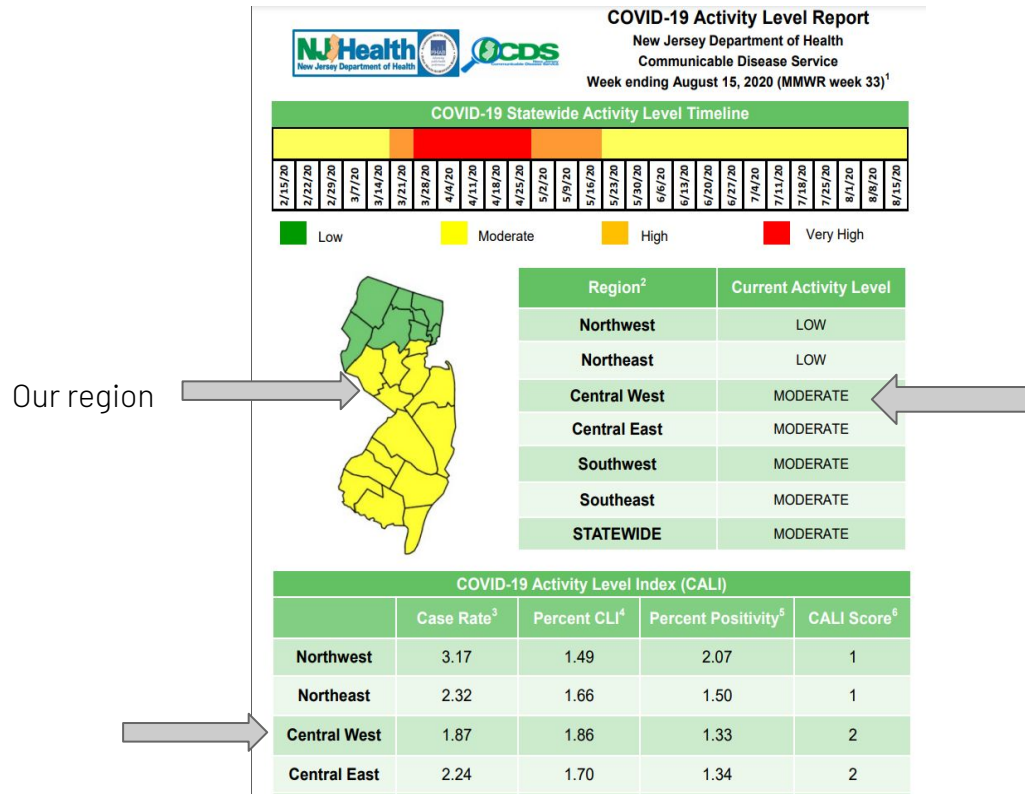
10

Why is the report important?

- ▶ Divides the state into six (6) regions where COVID-19 activity is monitored. This allows for more local metrics.
- ▶ Contains easy-to-use color coding.
- ▶ There are three (3) indices that make up the CALI score: case rates, percent of COVID-like illness, and percent positive.
- ▶ Schools launch protocols based on the weekly color code.



What does the report look like?



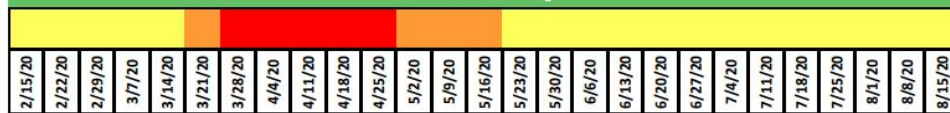
Activity Report Sample

August 15, 2020

Color code: yellow

Notice how
Northwest and
Northeast are green

COVID-19 Statewide Activity Level Timeline



Low

Moderate

High

Very High



Region ²	Current Activity Level
Northwest	LOW
Northeast	LOW
Central West	MODERATE
Central East	MODERATE
Southwest	MODERATE
Southeast	MODERATE
STATEWIDE	MODERATE

COVID-19 Activity Level Index (CALI)

	Case Rate ³	Percent CLI ⁴	Percent Positivity ⁵	CALI Score ⁶
Northwest	3.17	1.49	2.07	1
Northeast	2.32	1.66	1.50	1
Central West	1.87	1.86	1.33	2
Central East	2.24	1.70	1.34	2

Activity Report Sample

September 19, 2020

Color code: green

Notice how Central East is yellow

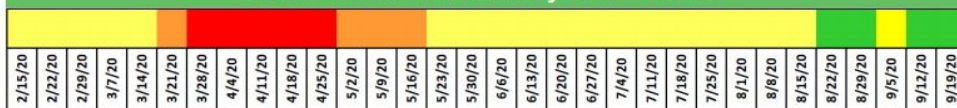


COVID-19 Activity Level Report

New Jersey Department of Health
Communicable Disease Service

Week ending September 19, 2020 (MMWR week 38)¹

COVID-19 Statewide Activity Level Timeline



Low

Moderate

High

Very High



Region ²	Current Activity Level
Northwest	LOW
Northeast	LOW
Central West	LOW
Central East	MODERATE
Southwest	LOW
Southeast	LOW
STATEWIDE	LOW

COVID-19 Activity Level Index (CALI)

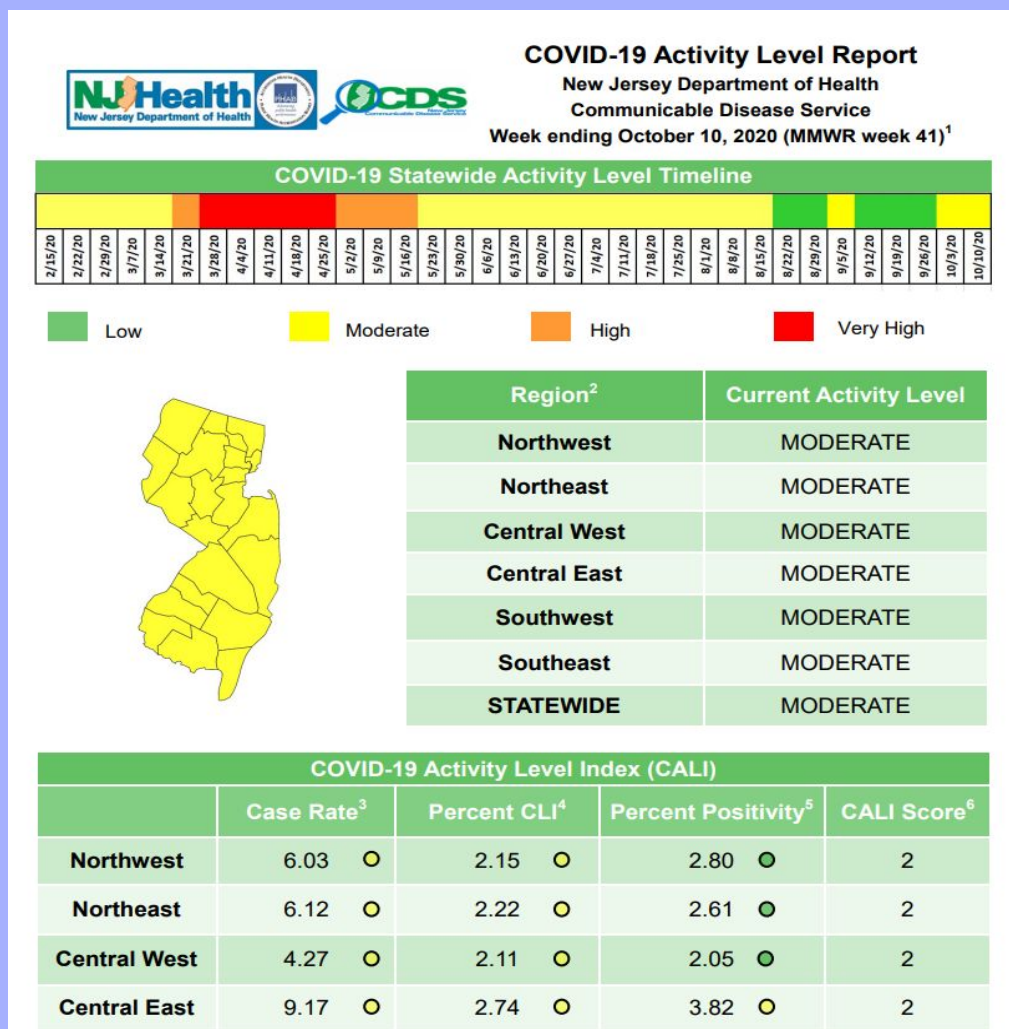
	Case Rate ³	Percent CLI ⁴	Percent Positivity ⁵	CALI Score ⁶
Northwest	2.80 ○	1.39 ●	1.81 ●	1
Northeast	2.28 ○	1.36 ●	1.44 ●	1
Central West	2.68 ○	1.21 ●	1.28 ●	1
Central East	5.42 ○	2.06 ○	2.71 ●	2

Activity Report Sample

October 10, 2020

Color code: yellow

This is the date the entire state turned yellow and remained, until...



Activity Report Sample

November 14, 2020

Color code: orange

The majority of the state turned orange. By the week of November 21, the entire state was orange.



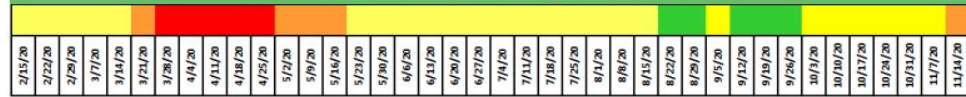
COVID-19 Activity Level Report

New Jersey Department of Health

Communicable Disease Service

Week ending November 14, 2020 (MMWR week 46)¹

COVID-19 Statewide Activity Level Timeline



Low

Moderate

High

Very High



Region²

Current Activity Level

Northwest

HIGH

Northeast

HIGH

Central West

HIGH

Central East

HIGH

Southwest

HIGH

Southeast

MODERATE

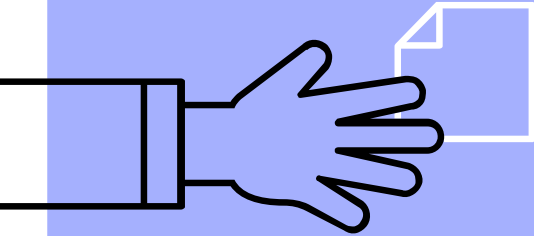
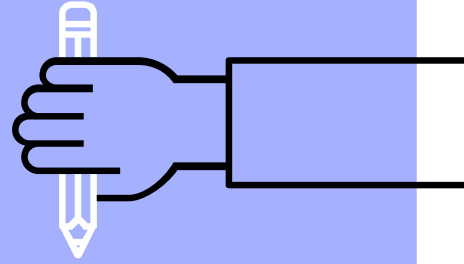
STATEWIDE

HIGH

COVID-19 Activity Level Index (CALI)

	Case Rate ³	Percent CLI ⁴	Percent Positivity ⁵	CALI Score ⁶
Northwest	34.03 ●	6.81 ○	10.39 ○	3
Northeast	32.83 ●	6.44 ○	10.04 ○	3
Central West	29.72 ●	5.50 ○	8.52 ○	3
Central East	27.87 ●	4.76 ○	8.68 ○	3

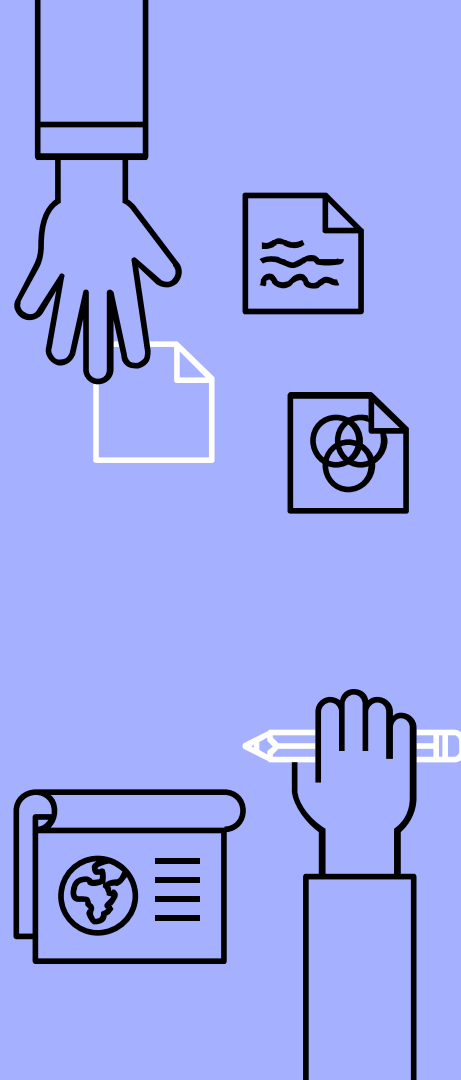
3. Color Change in the Activity Report



What changes as the colors
change?

What does the change to orange mean?

- ▶ The color coding assists schools with the response to COVID-19.
- ▶ Green and yellow colors have the Department of Health (DOH) contact tracing only positive cases.
- ▶ Orange color has the school, in collaboration with the DOH, contact tracing presumptive positive cases.
- ▶ Presumptive positive cases are those cases exhibiting symptoms.



Matrix

- ▶ Contact trace symptoms.
- ▶ Exclude those who have symptoms.
- ▶ Exclude those who have come in close contact with the individual displaying symptoms.
- ▶ If someone in the household is symptomatic and waiting results, those in the home should remain home until the test results returned.

COVID-19 Regional Risk Matrix

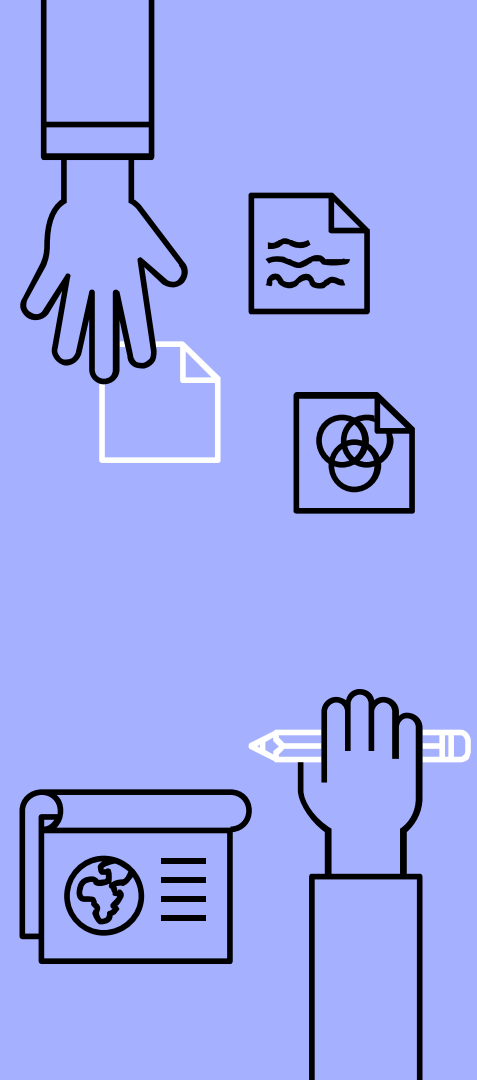
**For use by LHDs when providing guidance to school districts*

Low Risk	Moderate Risk	High Risk	Very High Risk
<p>Evaluate alternatives to in-person learning to ensure continuity of work or educational services.</p> <p>In response to a COVID-19 case among staff or students, follow COVID-19 exclusion criteria; work with local health department to identify and exclude close contacts following CDC guidance; refer to guidance on cleaning and disinfection.</p> <p>In response to ill students and staff, follow NJDOH School Exclusion List.</p> <p>* If ill person had potential exposure in past 14 days, follow COVID-19 exclusion criteria; wait at least 24 hours and clean/disinfect areas where ill person spent time.</p> <p>Permit limited activities involving interaction with multiple cohorts, ensuring adherence to precautions.</p>	<p>Consider a mixture of remote and/or hybrid learning approaches, and/or fully remote learning.</p> <p>In response to a COVID-19 case among staff or students, follow COVID-19 exclusion criteria; work with local health department to identify and exclude close contacts following CDC guidance; refer to guidance on cleaning and disinfection.</p> <p>In response to ill students and staff with COVID-19 compatible symptoms, follow COVID-19 exclusion criteria; wait at least 24 hours and clean/disinfect areas where ill person spent time.</p> <p>Minimize activities that involve interaction with multiple cohorts.</p>	<p>Consider implementing fully remote learning.</p> <p><i>If schools remain open for in-person learning:</i></p> <p>In response to staff or student is a COVID-19 case or who has COVID-19 compatible symptoms (not yet tested), follow COVID-19 exclusion criteria; work with local health department to identify and exclude close contacts according to CDC guidance; refer to guidance on cleaning and disinfection.</p> <p>* Decisions on when ill person's close contacts can return to school are dependent on the ill person's medical evaluation and COVID-19 test results.</p> <p>Restrict activities that involve interaction with multiple cohorts.</p>	<p>Implement fully remote learning</p>
<p>RISK LEVELS GREEN, YELLOW, AND ORANGE (IF OPEN FOR IN-PERSON LEARNING):</p> <ul style="list-style-type: none"> Require staff and students to stay home when sick or if they have been in close contact with someone with COVID-19 within the past 14 days. If someone in their household is being tested for COVID-19 due to illness, students/staff should also stay home until the test result is received. Parents/guardians, students and staff should notify school administrators of illness and known exposure. Have a policy for daily symptom screening for students and staff; have plans for students and staff to report symptoms that develop during the day. In conjunction with local health department, identify COVID-19 rapid testing resources (viral testing) for when staff and students develop COVID-19 compatible symptoms. Clean and disinfect frequently touched surfaces at least daily. Ensure adequate hand hygiene supplies are readily available. Implement physical distancing measures (e.g., reducing occupancy (staggered schedules, use of alternate spaces), installation of partitions/physical barriers, cancelling large gatherings/events, maintaining defined cohorts). Implement source control through wearing masks. 			
<p>ALL RISK LEVELS</p> <ul style="list-style-type: none"> Keep abreast of NJDOE and NJDOH COVID-19 guidance and surveillance indicators. Exchange after-hours contact information with your local health department. 			

What are the symptoms?

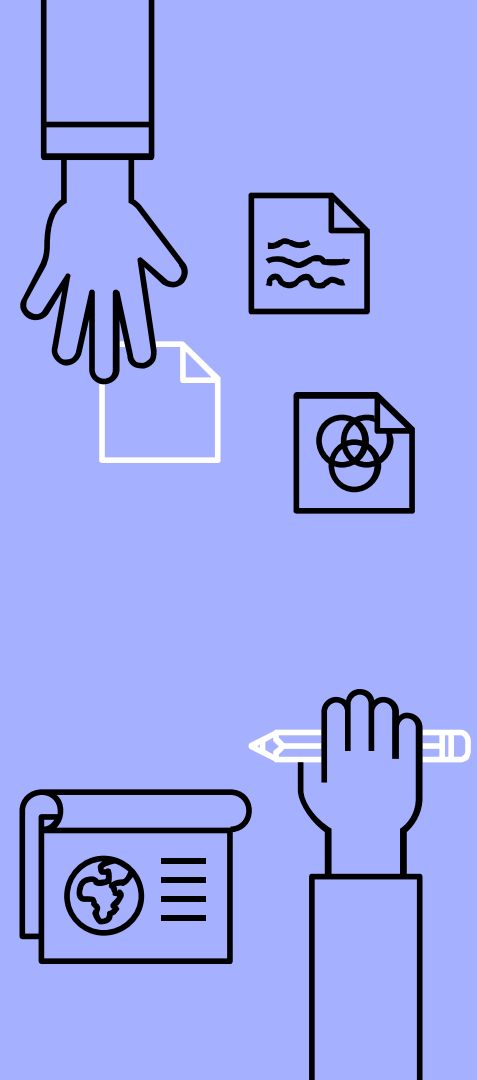
Parents should not send students to school when sick. For school settings, the DOH recommends individuals with the following symptoms be excluded:

- ▶ At least two of the following symptoms: fever (measure of subjective), chills, rigors (shivers), myalgia (muscle aches), headache, sore throat, nausea or vomiting, diarrhea, fatigue, congestion, runny nose; OR
- ▶ At least one of the following symptoms: cough, shortness of breath, difficulty breathing, new olfactory disorder, new taste disorder.



What does a color red mean?

- ▶ If our region meets the criteria for a red designation on the COVID-19 Activity report, the **DOH recommends implementation of full virtual learning.**
- ▶ Reports are published on Thursday afternoons.
- ▶ We would anticipate full virtual learning by the following Monday.



THANKS!

Any questions?

