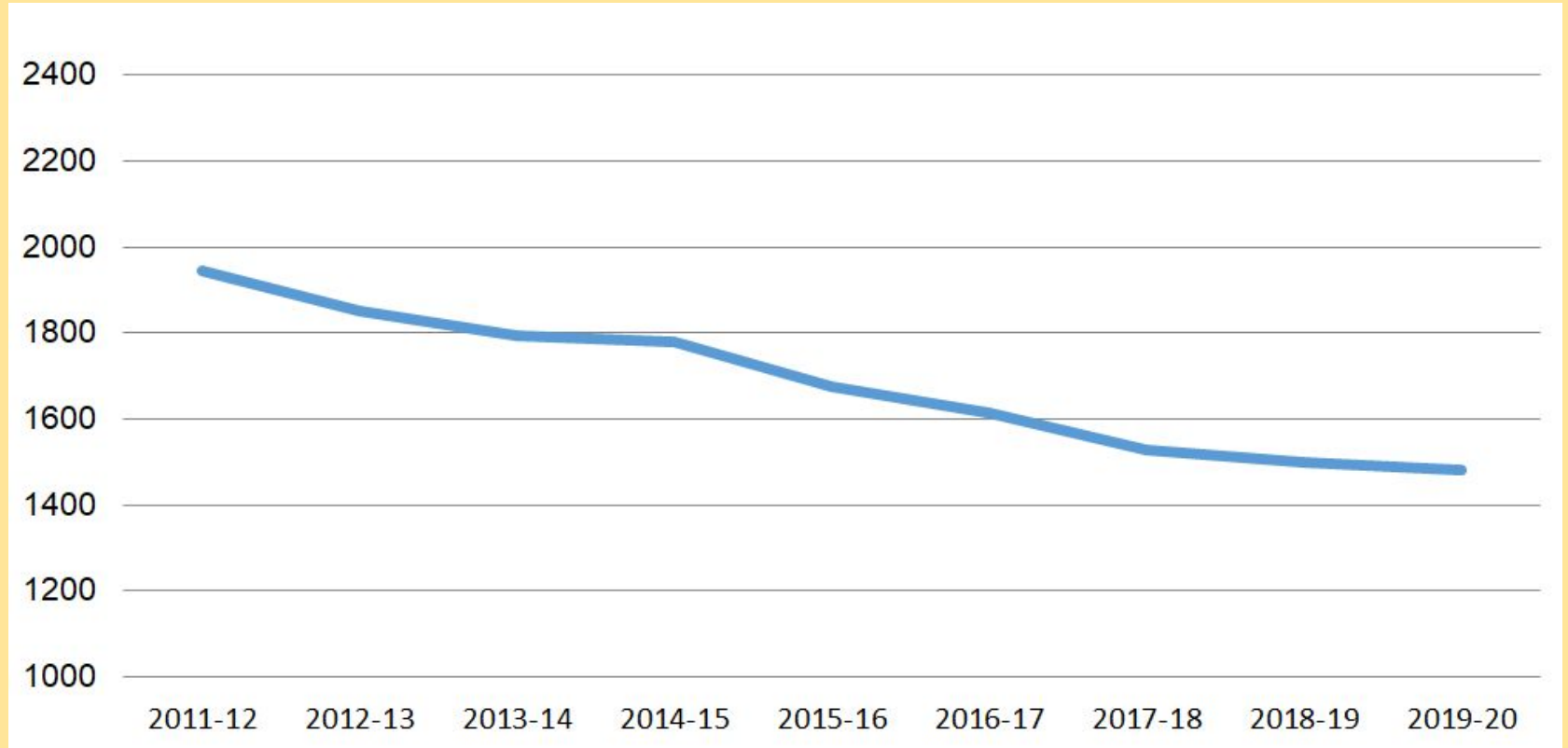


# Readington Township Housing Development Projections

Jonathan Hart, Ph.D., Superintendent of Schools  
February 25, 2020 Board of Education Meeting

# Our Enrollment History



# Our School Configuration

Three Bridges School

Grades PreK-3

Enrollment: 304



Whitehouse School

Grades K-3

Enrollment: 308

# Our School Configuration

Holland Brook School

Grades 4-5

Enrollment: 331



Readington Middle School

Grades 6-8

Enrollment: 531



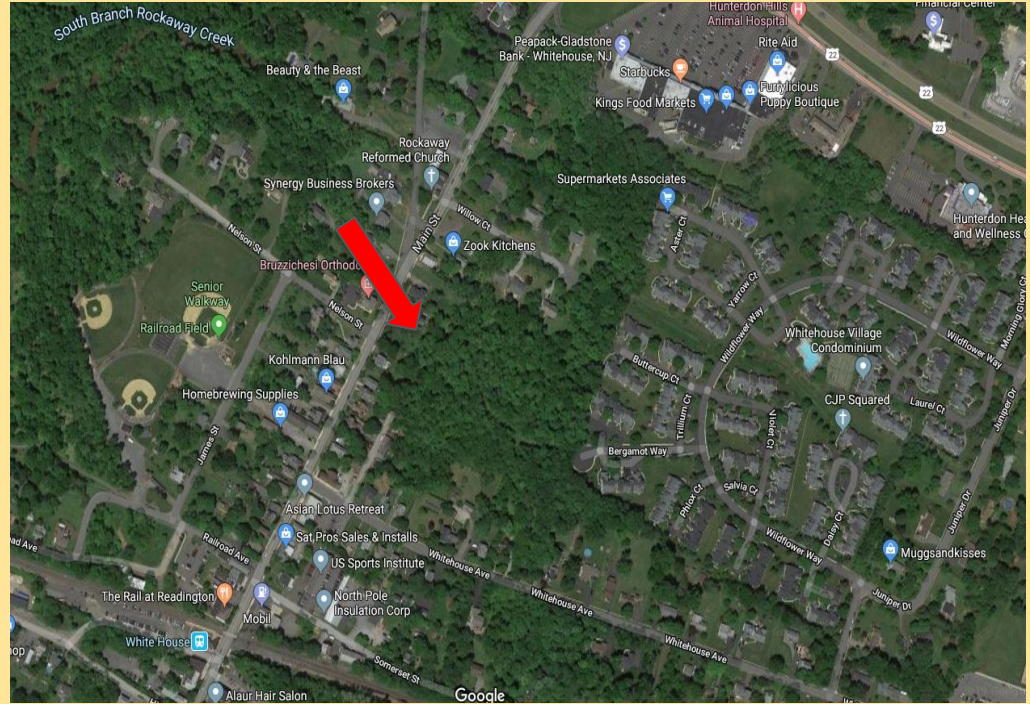
# The Willows at Whitehouse Station (Nelson Street)

72 total units

14 one bed, 40 two bed, 18 three bed

72 affordable units (100%)

Estimated completion Spring 2020





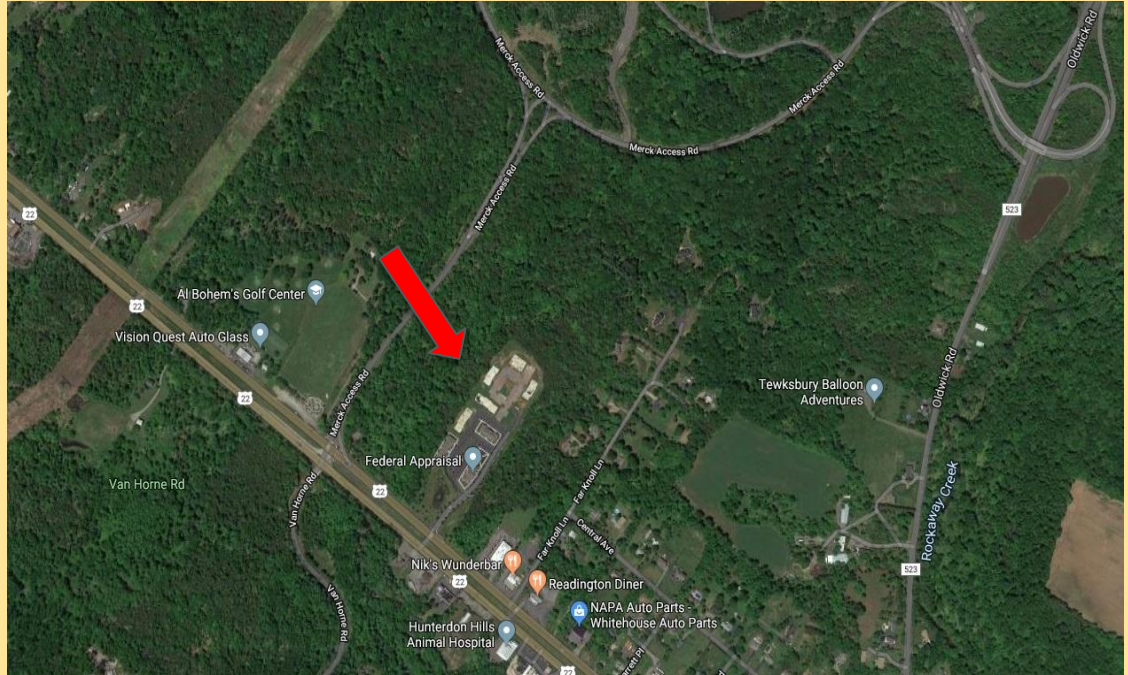
# Readington Commons (Rt. 22 West)

254 total units

64 affordable units (25%)

190 market rate units (75%)

Estimated completion 2022



# Bramco/Interstate Ironworks (Mullen Rd.)

192 total units

48 affordable units (25%)

144 market rate (75%)

Estimated completion 2023

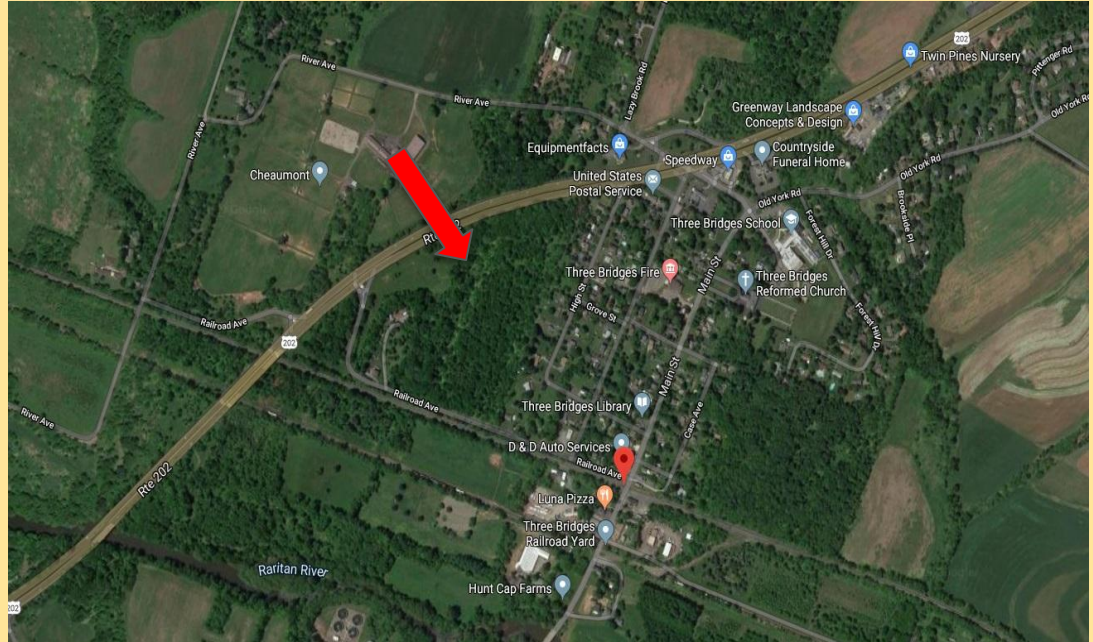


# Diaz Property (Route 202, Three Bridges)

80 total units

80 total affordable units (100%)

Estimated completion:  
2024-2025





# Our Planning

## Planning for the Willows:

- Continuous conversation with staff at The Willows with periodic updates on applications and potential student enrollments from The Willows property management
- The district provided The Willows office our registration packets
- Created additional seating on buses
- Discussion and consideration of Free/Reduced lunch applications

## Rutgers Study resource\*

Maintain continuous meetings with the Readington Township Committee

Closely monitoring enrollment

\*Davis, M., Frame, D., Ladell, R., Tantleff, D. (2018) School Age Children in Rental units in NJ: Results from a Survey of Developers and Property Managers. Rutgers Center for Real Estate.

# Our Planning (con't)

## Whitehouse School



- Three (3) of the four (4) developments are located in the northern portion of the Township (i.e. the Whitehouse School sending area)
- Careful observation of anticipated and actual enrollment numbers is needed at Whitehouse School
- Potential impact to the building operations, capacity, and staffing is being monitored



Thanks! Questions?