

Referendum

Readington Township Board of Education



Whitehouse School Capital Projects

WHITEHOUSE SCHOOL

Built in 1916

Glossary

- **Priority:** 1 through 5, with 1 being highest need or desire
- **Category:**
 - **Infrastructure/Maintenance** (ex. roofs, HVAC, paving, etc.)
 - **Student Experience** (ex. playgrounds, whiteboards, etc.)
 - **Facilities** (ex. Public address system, Integrated building management system, etc.)
- **Cost:** Total cost of project in entirety, with or without State Aid
- **State Aid:** Funding the State of New Jersey shall contribute for project costs
- **Timeframe:** How quickly the project is needed or desired
 - **Short** (1-2 years)
 - **Medium** (3-5 years)
 - **Long** (6+ years)
- **Start / End:** Anticipated timeframe for construction to begin and complete

WHS

REPLACE EXISTING FIRE ALARM SYSTEM

Priority 1

Facilities

Cost: \$571,998

State Aid: \$194,479 (34%)

Need: Medium Term (3-5 years)

Start: 7/28

End: 8/28

- Existing fire alarm systems are antiquated and more challenging to maintain
- Repairs are more challenging due to age of equipment
- Integration into IT systems and monitoring are becoming more challenging
- Requested by Facilities & Architect/Engineer



WHS

REPLACE INTERIOR FIRE DOORS

Priority 1

Infrastructure/Maintenance

Cost: \$26,000

State Aid: \$0 (0%)

Need: Short Term (1-2 years)

Start: 7/27

End: 8/27

- Older doors need upgraded to provide a better fire rating (2 doors)
- Shall enhance safety as new doors better prevent fire spreading to other parts of building
- Requested by Facilities & Architect/Engineer



WHS

REPLACE ROOF OVER GYM AND GYM OFFICES

Priority 1

Infrastructure/Maintenance

Cost: \$221,000

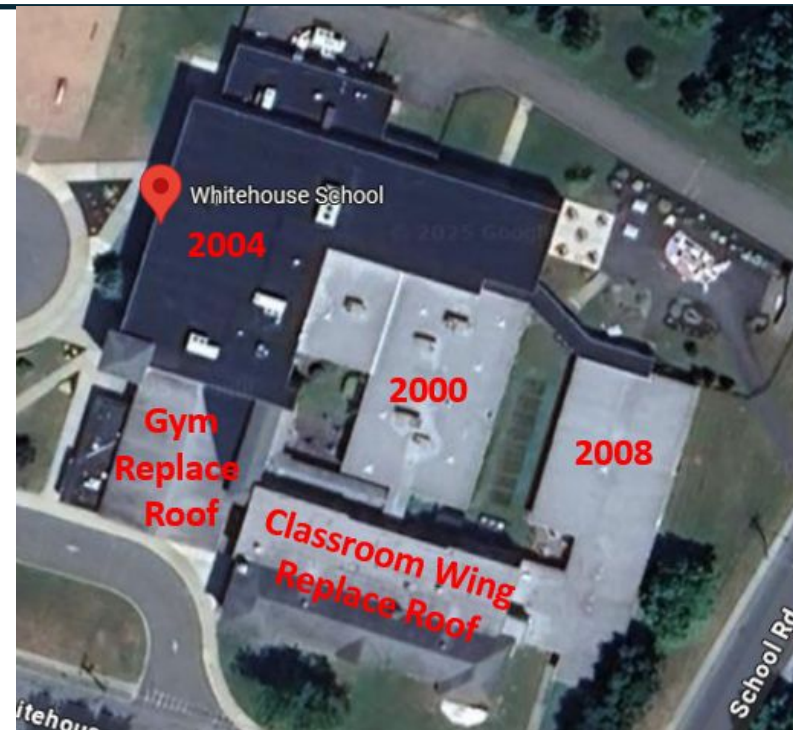
State Aid: \$75,140 (34%)

Need: Medium Term (3-5 years)

Start: 7/27

End: 8/27

- Shingled roof would be replaced with newer shingles
- Existing roof has leaks and causes damage to flooring requiring repairs/replacement
- Repairs are more challenging due to the age of the roof, and leaks pose air quality issues
- Requested by Facilities & Architect/Engineer



WHS

REPLACE ROOF OVER MEDIA CENTER ADDITION

Priority 1

Infrastructure/Maintenance

Cost: \$416,000

State Aid: \$141,440 (34%)

Need: Medium Term (3-5 years)

Start: 7/27

End: 8/27

- Roof would be replaced with BUR
- Repairs are more challenging due to the age of the roof, and leaks pose air quality issues
- Requested by Facilities & Architect/Engineer



WHS

REPLACE ROOF OVER 100 WING

Priority 1

Infrastructure/Maintenance

Cost: \$379,600

State Aid: \$129,064 (34%)

Need: Medium Term (3-5 years)

Start: 7/27

End: 8/27

- Roof would be replaced with BUR
- Repairs are more challenging due to the age of the roof, and leaks pose air quality issues
- Requested by Facilities & Architect/Engineer



WHS

REPLACE ROOF OVER ORIGINAL BUILDING

Priority 1

Infrastructure/Maintenance

Cost: \$552,500

State Aid: \$187,850 (34%)

Need: Medium Term (3-5 years)

Start: 7/27

End: 8/27

- Shingled roof would be replaced with newer shingles
- Remaining roof section would be replaced with BUR
- Repairs are more challenging due to the age of the roof, and leaks pose air quality issues
- Requested by Facilities & Architect/Engineer



WHS

REPLACE 2010 CLASSROOM AIRDALE UNITS

Priority 1

Infrastructure/Maintenance

Cost: \$1,638,000

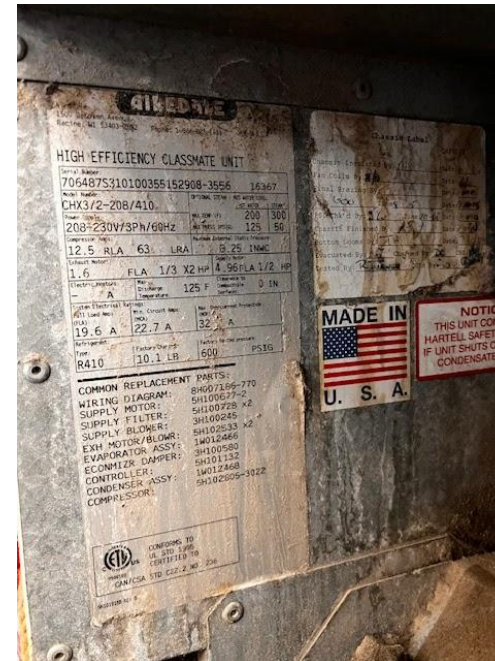
State Aid: \$556,920 (34%)

Need: Short Term (1-2 years)

Start: 7/27

End: 8/27

- Units are 24 years old, nearing end of useful life resulting in failures (21 units)
- Parts & repairs are becoming more challenging due to nature and age of equipment
- Lack of adequate heat & A/C worsens classroom environment, impacting learning & air quality
- Requested by Facilities, Staff & Architect/Engineer



WHS

REPLACE 2004 HVAC ROOF TOP UNITS FOR MUSIC ROOM

Priority 1

Infrastructure/Maintenance

Cost: \$97,500

State Aid: \$33,150 (34%)

Need: Long Term (6+ years)

Start: 7/27

End: 8/27

- HVAC units are 20 years old, nearing end of useful life resulting in failures
- Parts & repairs are becoming more challenging due to nature and age of equipment
- Lack of adequate heat & A/C worsens classroom environment, impacting learning & air quality
- Requested by Facilities, Staff & Architect/Engineer



WHS

REPLACE 2004 HVAC ROOF TOP UNITS FOR 2ND FLOOR CLASSROOMS

Priority 1

Infrastructure/Maintenance

Cost: \$325,000

State Aid: \$110,500 (34%)

Need: Long Term (6+ years)

Start: 7/27

End: 8/27

- HVAC units are 20 years old, nearing end of useful life resulting in failures
- Parts & repairs are becoming more challenging due to nature and age of equipment
- Lack of adequate heat & A/C worsens classroom environment, impacting learning & air quality
- Requested by Facilities, Staff & Architect/Engineer



WHS

REPLACE 2004 HVAC ROOF TOP UNITS FOR GYM

Priority 1

Infrastructure/Maintenance

Cost: \$292,500

State Aid: \$99,450 (34%)

Need: Long Term (6+ years)

Start: 7/27

End: 8/27

- HVAC units are 20 years old, nearing end of useful life resulting in failures
- Parts & repairs are becoming more challenging due to nature and age of equipment
- Lack of adequate heat & A/C worsens classroom environment, impacting learning & air quality
- Requested by Facilities & Architect/Engineer



WHS

REPLACE 2004 HVAC ROOF TOP UNITS FOR CAFETERIA

Priority 1

Infrastructure/Maintenance

Cost: \$292,500

State Aid: \$99,450 (34%)

Need: Long Term (6+ years)

Start: 7/27

End: 8/27

- HVAC units are 20 years old, nearing end of useful life resulting in failures
- Parts & repairs are becoming more challenging due to nature and age of equipment
- Lack of adequate heat & A/C worsens classroom environment, impacting learning & air quality
- Requested by Facilities & Architect/Engineer



WHS

REPLACE 2004 HVAC ROOF TOP UNITS FOR KITCHEN

Priority 1

Infrastructure/Maintenance

Cost: \$97,500

State Aid: \$33,150 (34%)

Need: Long Term (6+ years)

Start: 7/27

End: 8/27

- HVAC units are 20 years old, nearing end of useful life resulting in failures
- Parts & repairs are becoming more challenging due to nature and age of equipment
- Lack of adequate heat & A/C worsens classroom environment, impacting learning & air quality
- Requested by Facilities & Architect/Engineer



WHS

REPLACE 2004 HVAC ROOF TOP UNITS FOR STAGE & OFFICE

Priority 1

Infrastructure/Maintenance

Cost: \$200,000

State Aid: \$68,000 (34%)

Need: Long Term (6+ years)

Start: 7/27

End: 8/27

- HVAC units are 20 years old, nearing end of useful life resulting in failures
- Parts & repairs are becoming more challenging due to nature and age of equipment
- Lack of adequate heat & A/C worsens classroom environment, impacting learning & air quality
- Requested by Facilities & Architect/Engineer



WHS

REPLACE 2004 HVAC ROOF TOP UNITS FOR COMPUTER ROOM

Priority 1

Infrastructure/Maintenance

Cost: \$75,000

State Aid: \$25,500 (34%)

Need: Long Term (6+ years)

Start: 7/27

End: 8/27

- HVAC units are 20 years old, nearing end of useful life resulting in failures
- Parts & repairs are becoming more challenging due to nature and age of equipment
- Lack of adequate heat & A/C worsens classroom environment, impacting learning & air quality
- Requested by Facilities & Architect/Engineer



WHS

REPLACE 2004 HVAC ROOF TOP UNITS FOR CLASSROOMS

Priority 1

Infrastructure/Maintenance

Cost: \$97,500

State Aid: \$33,150 (34%)

Need: Long Term (6+ years)

Start: 7/27

End: 8/27

- HVAC units are 20 years old, nearing end of useful life resulting in failures
- Parts & repairs are becoming more challenging due to nature and age of equipment
- Lack of adequate heat & A/C worsens classroom environment, impacting learning & air quality
- Requested by Facilities & Architect/Engineer



WHS

INTEGRATED BUILDING MANAGEMENT SYSTEM

Priority 1

Facilities

Cost: \$953,329

State Aid: \$324,132(34%)

Need: Long Term (6+ years)

Start: 7/28

End: 8/28

- Equipment is original to building, and difficult to repair or troubleshoot with new technology
- Critical for HVAC functionality and optimization, & integrate key into new HVAC when replace
- Supports air quality and classroom environments for learning
- Software is becoming unsupported due to age by Microsoft, and as internet-based, security issue
- Requested by Facilities & Architect/Engineer



WHS

REPAVE PLAYGROUND AREAS

Priority 1

Infrastructure/Maintenance

Cost: \$122,850

State Aid: \$0 (0%)

Need: Long Term (6+ years)

Start: 7/27

End: 8/27

- Blacktop area near the outdoor map have major cracks
- Resurfacing or filling lasts only a few months
- If not repaved including base structure, then shall become a safety concern long-term
- Requested by Principals, Facilities, Staff & Parents



WHS

REPLACE EXISTING EXTERIOR DOORS

Priority 1

Infrastructure/Maintenance

Cost: \$238,000

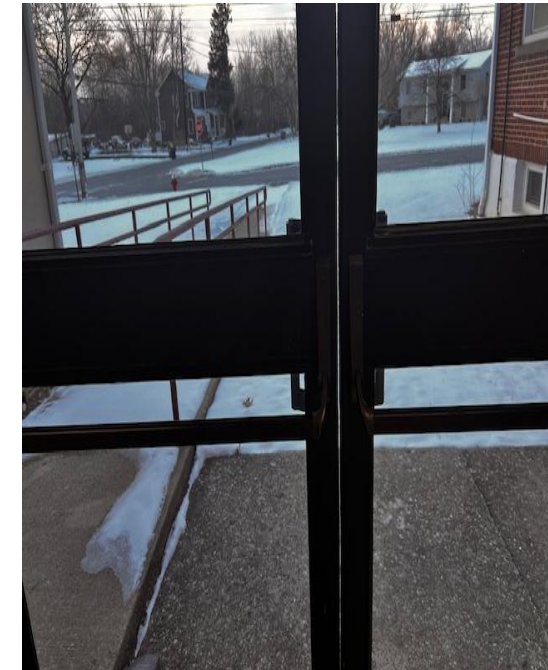
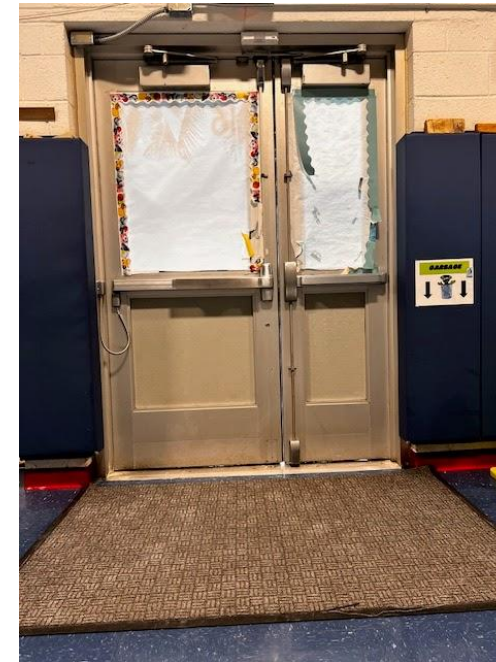
State Aid: \$80,920 (34%)

Need: Short Term (1-2 years)

Start: 7/26

End: 8/26

- Replace existing single and double doors (approx. 21 doors)
- Some doors do not close automatically causing a security issue
- Most doors have an air gap which is not energy efficient
- Requested by Principals, Facilities, & Architect/Engineer



WHS

REPLACE CORRIDOR DOORS 1st FLOOR

Priority 1

Infrastructure/Maintenance

Cost: \$131,950

State Aid: \$0 (0%)

Need: Short Term (1-2 years)

Start: 7/27

End: 8/27

- Replace existing wood corridor doors (approx. 29 doors)
- Older wood doors are showing aging along with functionality issues
- New door hardware in entire building would be replaced with new security protocols
- Requested by Principals, Facilities, & Architect/Engineer



WHS

REPLACE CORRIDOR DOORS - 2ND FLOOR

Priority 1

Infrastructure/Maintenance

Cost: \$74,100

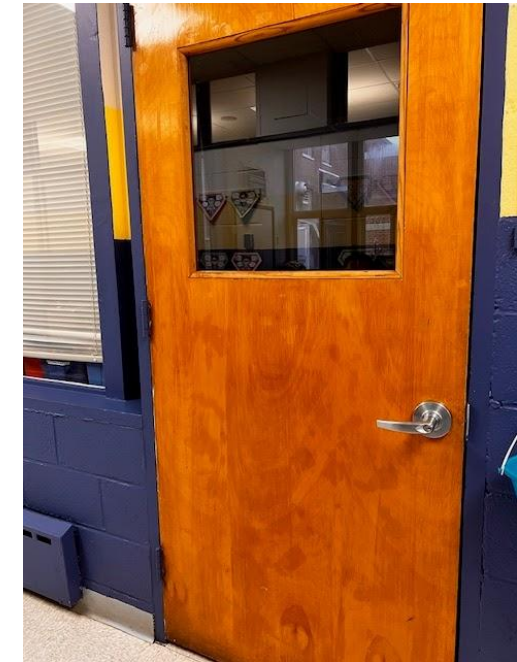
State Aid: \$0 (0%)

Need: Short Term (1-2 years)

Start: 7/27

End: 8/27

- Replace existing wood corridor doors (approx. 19 doors)
- Older wood doors are showing aging along with functionality issues
- New door hardware in entire building would be replaced with new security protocols
- Requested by Principals, Facilities, & Architect/Engineer



WHS

NEW WINDOW TREATMENTS

Priority 2

Infrastructure/Maintenance

Cost: \$400,000

State Aid: \$0 (0%)

Need: Short Term (1-2 years)

Start: 7/26

End: 8/26

- Window treatments are older style and showing age, cost reflects replacing all in building
- Interior windows for safety and security could be replaced for fraction of costs
- Requested by Principals, Staff & Facilities



WHS

UPGRADE PARKING LOT LIGHTS

Priority 1

Infrastructure/Maintenance

Cost: \$135,000

State Aid: \$0 (0%)

Need: Medium Term (3-5 years)

Start: 7/27

End: 8/27

- Provide lighting at building exterior/parking areas as none currently exists, safety issue
- Additional lighting need for security and outdoor evening events
- Flood lights could be installed for lower cost on exterior of building with less coverage
- Requested by Principals, Facilities, & parents



WHS

NEW WALKWAYS / CONCRETE

Priority 1

Facilities

Cost: \$253,500

State Aid: \$0 (0%)

Need: Long Term (6+ years)

Start: 7/27

End: 8/27

- Replace existing paved walkways at building
- Current walkways have major cracks and uneven surfaces, & students walk to school at WHS
- Unnecessary safety risks to staff and students
- Requested by Principals, Facilities, & Architect/Engineer



WHS

INSTALL NEW EMERGENCY BACKUP GENERATOR

Priority 1

Facilities

Cost: \$482,600

State Aid: \$164,084 (34%)

Need: Long Term (6+ years)

Start: 7/28

End: 8/28

- Frequent loss of power to district school buildings, resulting in early dismissal or cancellation
- Impacts student learning such as relocation of students
- Can cause damage to equipment and machinery, and unnecessary safety risks to staff/students
- Requested by Administration & Architect/Engineer



Education & Student Centered Projects

WHS

REPLACE INTERACTIVE WHITEBOARDS IN CLASSROOMS

Priority 1

Student Experience

Cost: \$181,397

State Aid: \$0 (0%)

Need: Medium Term (3-5 years)

Start: 7/26

End: 8/26

- Projector and interactive hardware failing, end of manufacturer support
- Security vulnerabilities increase as devices and software no longer supported
- Projection only function can be maintained, but shall impact teacher instruction
- Requested by Principals, Facilities, IT & Architect/Engineer



WHS

NEW SPECIAL NEEDS PLAYGROUND

Priority 1

Student Experience

Cost: \$631,800

State Aid: \$0 (0%)

Need: Medium Term (3-5 years)

Start: 7/27

End: 8/27

- New Playground (Sensory/special ed equipment, swings, misting machines, seesaws, tree climbing wall, musical equipment, one shaded area with canopy, etc.)
- Existing equipment is starting to fail, with entire pieces being removed due to wear and tear
- Over 300 children use playground equipment daily, in addition to local community members
- Requested by Principals, Facilities, Staff & Parents



WHS

NEW CLASSROOM CUBBIES

Priority 2

Student Experience

Cost: \$100,000

State Aid: \$0 (0%)

Need: Short Term (1-2 years)

Start: 7/26

End: 8/26

- Replace existing student storage cubbies (5 classrooms)
- Current cubbies are outdated and becoming nonfunctional for storage
- New cubbies would provide a better classroom appearance and provide better storage
- Requested by Principals & Staff



Not In Referendum

But

Being Accomplished

Through Other Means

WHS

FLOORING REPAIR/REPLACE NEAR NORTH STAIRWELL

Priority 1

Infrastructure/Maintenance

Cost: Reserves / Surplus

State Aid: \$0 (0%)

Need: Medium Term (3-5 years)

Start: 7/26

End: 8/26

- Flooring has significant crack which probably worsen
- Floor slab needs replaced and add expansion joints
- Could become safety hazard long-term
- Requested by Facilities & Architect/Engineer



WHS

RENOVATE TOILET ROOM

Priority 1

Facilities

Cost: Reserves / Surplus

State Aid: \$32,885 (34%)

Need: Short Term (1-2 years)

Start: 7/27

End: 8/27

- This is a staff toilet room near classroom 141A
- Outdated toilet room needs renovated
- Attached janitor room door does not close
- Requested by Principals & Staff



WHS

INSULATE EXISTING GYM OUTDOOR DUCT (No. 41)

Priority 1

Infrastructure/Maintenance

Cost: Reserves / Surplus

State Aid: \$0 (0%)

Need: Short Term (1-2 years)

Start: 7/26

End: 8/26

- Duct work is exposed to the outside elements creating energy inefficiencies
- Requested by Facilitied & Architect/Engineer



WHS

NEW DRAINAGE AT GARDEN AREA

Priority 2

Infrastructure/Maintenance

Cost: Reserves / Surplus

State Aid: \$0 (0%)

Need: Medium Term (3-5 years)

Start: 7/27

End: 8/27

- Needed to redirect water and eliminate ponding
- Requested by Facilities & Architect/Engineer



WHS

REPLACE EXISTING WIRELESS ACCESS POINTS FOR INTERNET (No. 53)

Priority 2

Facilities

Cost: Federal E-Rate

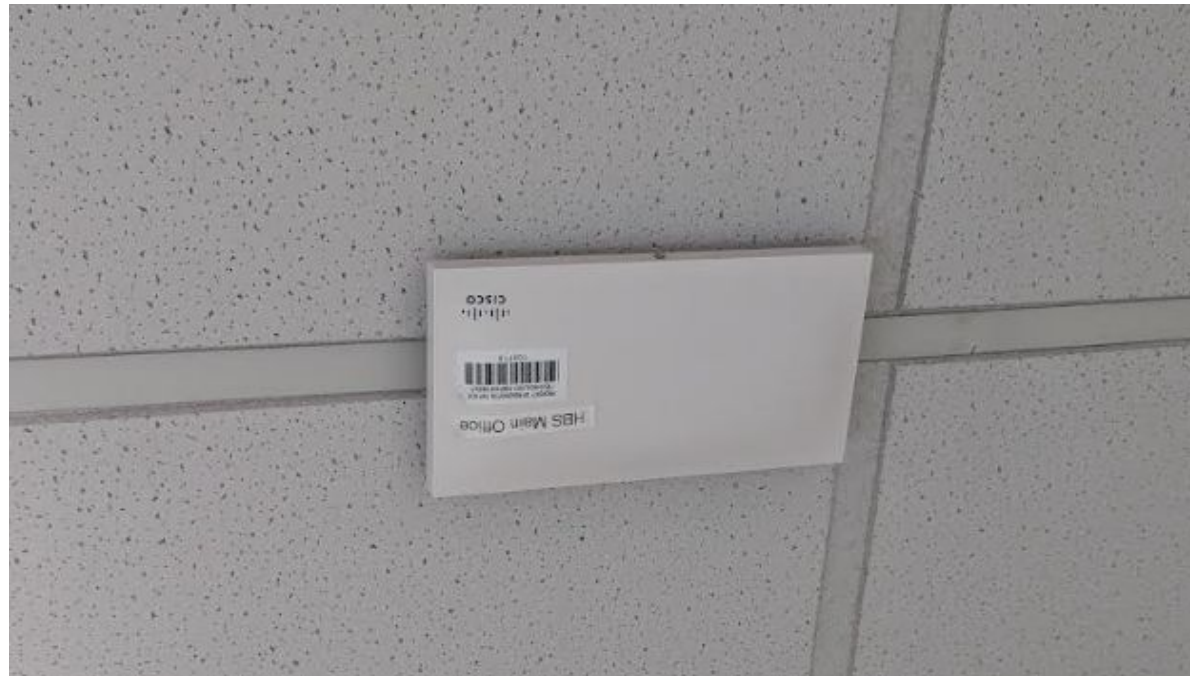
Federal Aid: 40% Eligible

Need: Short Term (2-3 years)

Start: 7/27

End: 8/27

- Existing Access Points are nearing end-of-life
- Lack of system support due to age shall expose IT security vulnerabilities
- Reliability and coverage of internet is critical for student learning in 21st century
- Requested by IT



WHS

NEW NETWORK SWITCHES (No. 54)

Priority 2

Facilities

Cost: Federal E-Rate

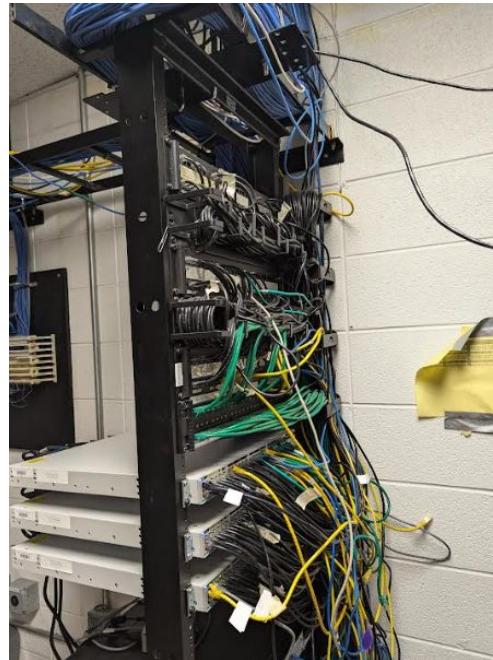
Federal Aid: 40% Eligible

Need: Medium Term (3-5 years)

Start: 7/27

End: 8/27

- Existing Access Points are nearing end-of-life
- Lack of system support due to age shall expose IT security vulnerabilities
- Reliability and coverage of internet is critical for student learning in 21st century
- Requested by IT



Summary

Referendum Projects	Referendum		State
Whitehouse School (WHS)	Projects		Aid
	\$8,987,124		\$2,356,379
Project	Cost	34% State Aid Eligible	State Aid
REPLACE INTERIOR FIRE DOORS	\$26,000	No	
REPLACE EXISTING FIRE ALARM SYSTEM	\$571,998	Yes	\$194,479
INSTALL NEW EMERGENCY BACKUP GENERATOR	\$482,600	Yes	\$164,084
NEW SPECIAL NEEDS PLAYGROUND	\$631,800	No	
REPLACE INTERACTIVE WHITEBOARDS IN CLASSROOMS	\$181,397	No	
REPLACE EXISTING EXTERIOR DOORS	\$238,000	Yes	\$80,920
REPLACE 2010 CLASSROOM AIRDALE UNITS	\$1,638,000	Yes	\$556,920
REPLACE ROOF OVER GYM AND GYM OFFICES	\$221,000	Yes	\$75,140
2004 HVAC ROOF TOP UNITS FOR MUSIC ROOM	\$97,500	Yes	\$33,150
2004 HVAC ROOF TOP UNITS FOR 2ND FLOOR CLASSROOMS	\$325,000	Yes	\$110,500
REPLACE ROOF OVER MEDIA CENTER ADDITION	\$416,000	Yes	\$141,440
REPLACE CORRIDOR DOORS 1st FLOOR	\$131,950	No	
INTEGRATED BUILDING MANAGEMENT SYSTEM	\$953,329	Yes	\$324,132
REPLACE ROOF OVER 100 WING	\$379,600	Yes	\$129,064
REPLACE ROOF OVER ORIGINAL BUILDING	\$552,500	Yes	\$187,850
NEW WALKWAYS	\$253,500	No	
REPLACE CORRIDOR DOORS - 2ND FLOOR	\$74,100	No	
2004 HVAC ROOF TOP UNITS FOR GYM	\$292,500	Yes	\$99,450
REPAVE PLAYGROUND AREAS	\$122,850	No	
2004 HVAC ROOF TOP UNITS FOR CAFETERIA	\$292,500	Yes	\$99,450
2004 HVAC ROOF TOP UNITS FOR KITCHEN	\$97,500	Yes	\$33,150
2004 HVAC ROOF TOP UNITS FOR STAGE & OFFICE	\$200,000	Yes	\$68,000
2004 HVAC ROOF TOP UNITS FOR COMPUTER ROOM	\$75,000	Yes	\$25,500
2004 HVAC ROOF TOP UNITS FOR CLASSROOMS	\$97,500	Yes	\$33,150
UPGRADE PARKING LOT LIGHTS	\$135,000	No	
NEW WINDOW TREATMENTS	\$400,000	No	
NEW CLASSROOM CUBBIES	\$100,000	No	