

Referendum

Readington Township Board of Education



Three Bridges School Capital Projects

THREE BRIDGES SCHOOL

Built in 1950

Glossary

- **Priority:** 1 through 5, with 1 being highest need or desire
- **Category:**
 - **Infrastructure/Maintenance** (ex. roofs, HVAC, paving, etc.)
 - **Student Experience** (ex. playgrounds, whiteboards, etc.)
 - **Facilities** (ex. Public address system, Integrated building management system, etc.)
- **Cost:** Total cost of project in entirety, with or without State Aid
- **State Aid:** Funding the State of New Jersey shall contribute for project costs
- **Timeframe:** How quickly the project is needed or desired
 - **Short** (1-2 years)
 - **Medium** (3-5 years)
 - **Long** (6+ years)
- **Start / End:** Anticipated timeframe for construction to begin and complete

TBS

REPLACE EXISTING FIRE ALARM SYSTEM

Priority 1

Facilities

Cost: \$479,193

State Aid: \$162,926 (34%)

Need: Medium Term (3-5 years)

Start: 7/28

End: 8/28

- Existing fire alarm systems are antiquated and more challenging to maintain
- Repairs are more challenging due to age of equipment, & costly in annual operating budget
- Integration into IT systems and monitoring are becoming more challenging
- Requested by Facilities & Architect/Engineer



TBS

NEW GYM ROOF

Priority 1

Infrastructure/Maintenance

Cost: \$362,700

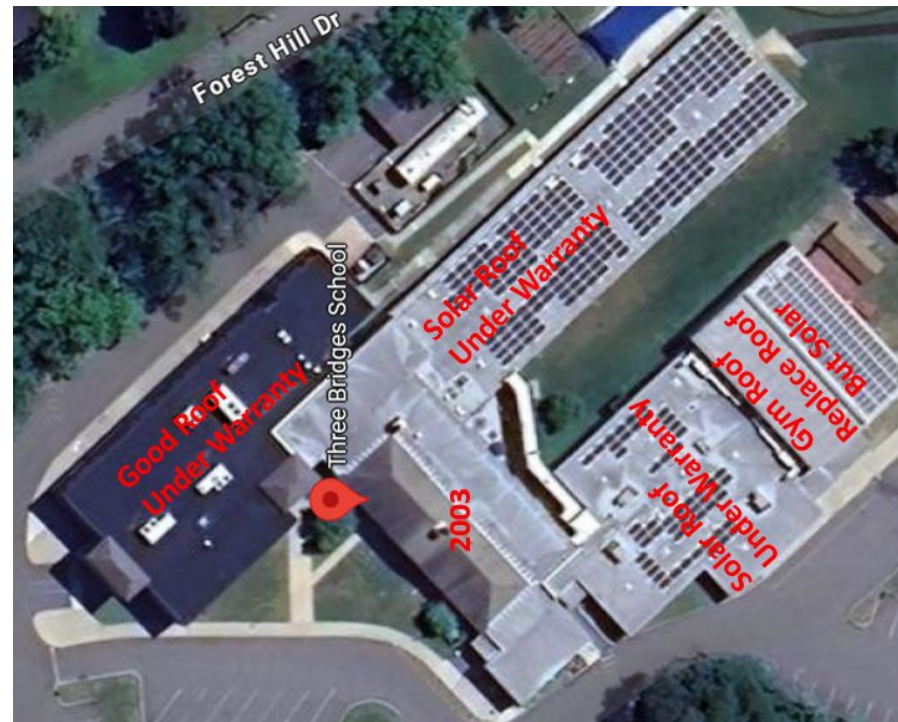
State Aid: \$123,318 (34%)

Need: Medium Term (3-5 years)

Start: 7/27

End: 8/27

- Roof of gymnasium leaks due to poor design
- Roof has solar panels on half posing challenge to replace for 7 more years
- Repairs are more challenging due to the age of the roof, and leaks pose air quality issues
- Requested by Principals, Staff, Facilities & Architect/Engineer



TBS

REPLACE ROOF OVER CLASSROOM WING

Priority 1

Infrastructure/Maintenance

Cost: \$156,000

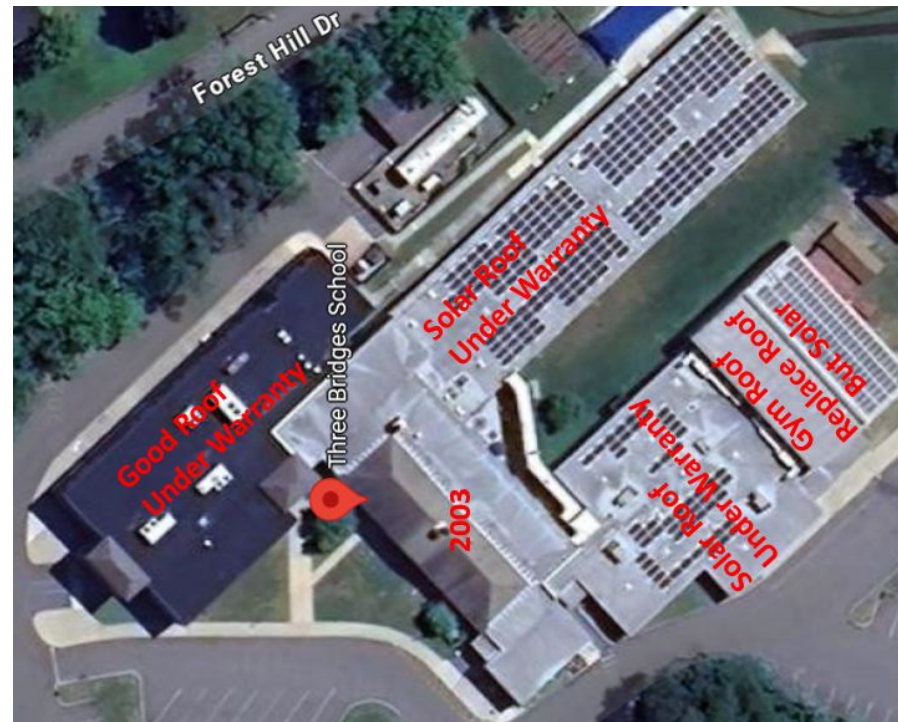
State Aid: \$53,040 (34%)

Need: Medium Term (3-5 years)

Start: 7/27

End: 8/27

- Shingled roof from 2003 would be replaced with newer shingles (4,000 sf)
- Roof section would be replaced with Built-up Roofing (BUR)
- Repairs are more challenging due to the age of the roof, and leaks pose air quality issues
- Requested by Facilities & Architect/Engineer



TBS

REPLACE 2004 ADDITION HVAC ROOF TOP UNITS

Priority 1

Infrastructure/Maintenance

Cost: \$780,000

State Aid: \$265,200 (34%)

Need: Long Term (6+ years)

Start: 7/27

End: 8/27

- HVAC units are 20 years old, nearing end of useful life resulting in failures
- Parts & repairs are becoming more challenging due to nature and age of equipment
- Lack of adequate heat & A/C worsens classroom environment, impacting learning & air quality
- Requested by Facilities, Staff & Architect/Engineer



TBS

REPLACE 2010 CLASSROOM AIREDALE HVAC UNITS

Priority 1

Infrastructure/Maintenance

Cost: \$1,248,000

State Aid: \$424,320 (34%)

Need: Long Term (6+ years)

Start: 7/27

End: 8/27

- HVAC units are 15 years old, nearing end of useful life resulting in failures
- Parts & repairs are becoming more challenging due to nature and age of equipment
- Lack of adequate heat & A/C worsens classroom environment, impacting learning & air quality
- Requested by Principals, Facilities, Staff & Architect/Engineer



TBS

REPLACE 2 GYM REZNOR WITH NEW RTU AND A/C HVAC

Priority 1

Infrastructure/Maintenance

Cost: \$650,000

State Aid: \$221,000 (34%)

Need: Long Term (6+ years)

Start: 7/27

End: 8/27

- HVAC units are over a decade old, nearing end of useful life resulting in failures
- Parts & repairs are becoming more challenging due to nature and age of equipment
- Lack of adequate heat & A/C worsens classroom environment, impacting learning & air quality
- Requested by Facilities, Staff & Architect/Engineer



TBS

INTEGRATED BUILDING MANAGEMENT SYSTEM

Priority 1

Facilities

Cost: \$798,655

State Aid: \$271,543 (34%)

Need: Long Term (6+ years)

Start: 7/28

End: 8/28

- Equipment is original to building, and difficult to repair or troubleshoot with new technology
- Critical for HVAC functionality and optimization, & integrate key into new HVAC when replace
- Supports air quality and classroom environments for learning
- Software is becoming unsupported due to age by Microsoft, and as internet-based, security issue
- Requested by Facilities & Architect/Engineer



TBS

REPAVE AT SCHOOL

Priority 1

Infrastructure/Maintenance

Cost: \$276,000

State Aid: \$0 (0%)

Need: Medium Term (3-5 years)

Start: 7/27

End: 8/27

- Student drop-off/pick-up area have major cracks, or are starting to turn to gravel entirely
- Resurfacing or filling is not an option due to length of crack, weathering
- If not repaved including base structure, then shall become a safety concern long-term
- Repaving design would include more parking spaces and other enhancements for safety
- Requested by Facilities & Architect/Engineer



TBS

REPAVE PLAYGROUND AREAS

Priority 1

Infrastructure/Maintenance

Cost: In Paving

State Aid: \$0 (0%)

Need: Long Term (6+ years)

Start: 7/27

End: 8/27

- Blacktop area has major cracks
- Resurfacing or filling lasts only a few months
- If not repaved including base structure, then shall become a safety concern long-term
- Requested by Principals, Facilities, Staff & Parents



TBS

REPLACE EXISTING EXTERIOR DOORS

Priority 1

Infrastructure/Maintenance

Cost: \$169,000

State Aid: \$57,460 (34%)

Need: Short Term (1-2 years)

Start: 7/26

End: 8/26

- Replace existing single and double doors (approx. 16 doors)
- Some doors do not close automatically causing a security issue
- Most doors have an air gap which is not energy efficient
- Requested by Principals, Facilities, & Architect/Engineer



TBS

REPLACE CORRIDOR DOORS - GRADE 1

Priority 2

Infrastructure/Maintenance

Cost: \$55,000

State Aid: \$0 (0%)

Need: Short Term (1-2 years)

Start: 7/27

End: 8/27

- Replace existing wood corridor doors and hardware
- Older wood doors are showing aging along with functionality issues
- New door hardware in entire building would be replaced with new security protocols
- Requested by Principals, Facilities, & Architect/Engineer



TBS

REPLACE CORRIDOR DOORS - GRADE 2-3 WING

Priority 2

Infrastructure/Maintenance

Cost: \$55,000

State Aid: \$0 (0%)

Need: Short Term (1-2 years)

Start: 7/27

End: 8/27

- Replace existing wood corridor doors and hardware
- Older wood doors are showing aging along with functionality issues
- New door hardware in entire building would be replaced with new security protocols
- Requested by Principals, Facilities, & Architect/Engineer



TBS

REPLACE WINDOWS IN OLD WING

Priority 1

Infrastructure/Maintenance

Cost: \$1,274,000

State Aid: \$433,160 (34%)

Need: Medium Term (3-5 years)

Start: 7/27

End: 8/27

- Windows have leaks and cracks letting drafts into classroom & water penetration
- Maintenance is becoming challenging due to age of windows
- Air quality issue could occur if not replaced long-term
- Requested by Principals, Administration, Facilities & Architect/Engineer



TBS

NEW WINDOW TREATMENTS

Priority 1

Infrastructure/Maintenance

Cost: \$400,000

State Aid: \$0 (0%)

Need: Short Term (1-2 years)

Start: 7/26

End: 8/26

- Window treatments are older style and showing age, cost reflects replacing all in building
- Interior windows for safety and security could be replaced for fraction of costs
- With new windows being installed, new window treatments would be required
- Requested by Principals, Staff & Facilities



TBS

RENOVATE TOILETS - GRADE 1

Priority 1

Facilities

Cost: \$585,000

State Aid: \$198,900 (34%)

Need: Short Term (1-2 years)

Start: 7/27

End: 8/27

- Renovation of gang toilet rooms in Grade 1 corridor
- Toilets are utilized by special needs and Grade 1 students
- Toilets are aged and outdated
- Requested by Principals, Administration & Architect/Engineer



TBS

INSTALL OUTDOOR EXTERIOR LIGHTING

Priority 2

Facilities

Cost: \$135,000

State Aid: \$0 (0%)

Need: Medium Term (3-5 years)

Start: 7/27

End: 8/27

- Provide lighting at building exterior/parking areas as none currently exists, safety issue
- Additional lighting need for security and outdoor evening events
- Flood lights could be installed for lower cost on exterior of building with less coverage
- Requested by Principals, Facilities, & parents



TBS

INSTALL NEW EMERGENCY BACKUP GENERATOR

Priority 1

Facilities

Cost: \$644,800

State Aid: \$219,232 (34%)

Need: Long Term (6+ years)

Start: 7/28

End: 8/28

- Frequent loss of power to district school buildings, resulting in early dismissal or cancellation
- Impacts student learning such as relocation of students
- Can cause damage to equipment and machinery, and unnecessary safety risks to staff/students
- Requested by Administration & Architect/Engineer



Education & Student Centered Projects

TBS

REPLACE INTERACTIVE WHITEBOARDS IN CLASSROOMS

Priority 1

Student Experience

Cost: \$181,397

State Aid: \$0 (0%)

Need: Medium Term (3-5 years)

Start: 7/26

End: 8/26

- Projector and interactive hardware failing, end of manufacturer support
- Security vulnerabilities increase as devices and software no longer supported
- Projection only function can be maintained, but shall impact teacher instruction
- Requested by Principals, Facilities, IT & Architect/Engineer



TBS

NEW SPECIAL NEEDS PLAYGROUND

Priority 1

Student Experience

Cost: \$631,800

State Aid: \$0 (0%)

Need: Medium Term (3-5 years)

Start: 7/27

End: 8/27

- New Playground (Sensory/special ed equipment, swings, misting machines, seesaws, tree climbing wall, musical equipment, one shaded area with canopy, etc.)
- Existing equipment is starting to fail, with entire pieces being removed due to wear and tear
- Over 300 children use playground equipment daily, in addition to local community members
- Requested by Principals, Facilities, Staff & Parents



TBS

INSTALL NEW PAVED PATH TO PLAYGROUND

Priority 1

Infrastructure/Maintenance

Cost: In Playground

State Aid: \$0 (0%)

Need: Medium Term (3-5 years)

Start: 7/27

End: 8/27

- Current pathway is soil/grass which becomes muddy at times
- Snow can turn to ice which is not ideal for students and staff safety as unpaved walkway
- Requested by Facilities, Staff, & Principal



TBS

CUBBIES IN FIRST GRADE + PRE K CLASSROOMS

Priority 1

Student Experience

Cost: \$100,000

State Aid: \$0 (0%)

Need: Short Term (1-2 years)

Start: 7/26

End: 8/26

- Replace existing student storage cubbies (10 classrooms)
- Current cubbies are outdated and becoming nonfunctional for storage including backpacks
- New cubbies would provide a better classroom appearance and provide better storage
- Requested by Principals & Staff



Not In Referendum

But

Being Accomplished

Through Other Means

TBS

REPLACE EXISTING WATER HEATER

Priority 1

Infrastructure/Maintenance

Cost: Reserves / Surplus

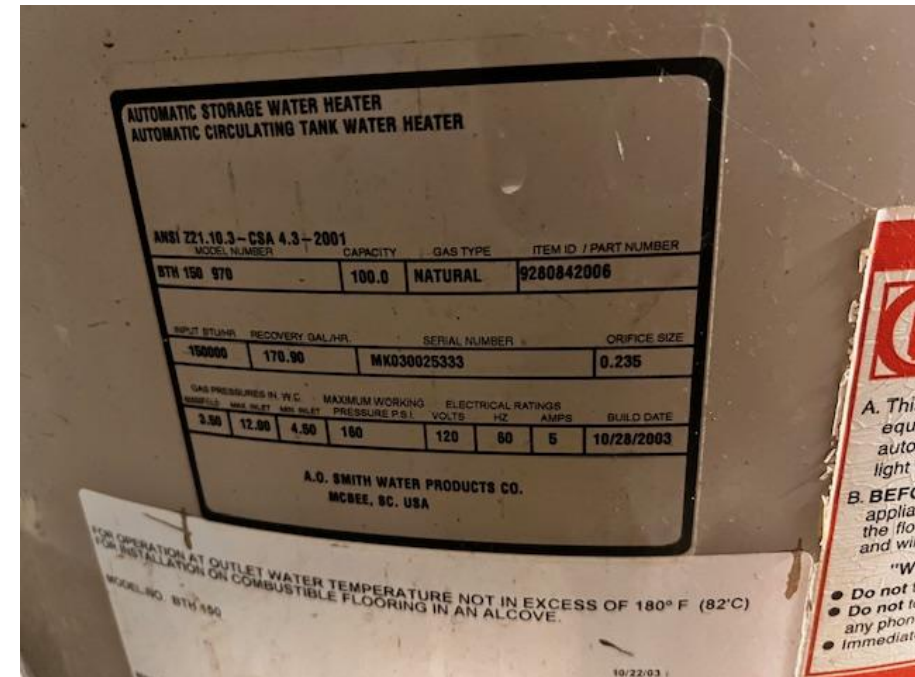
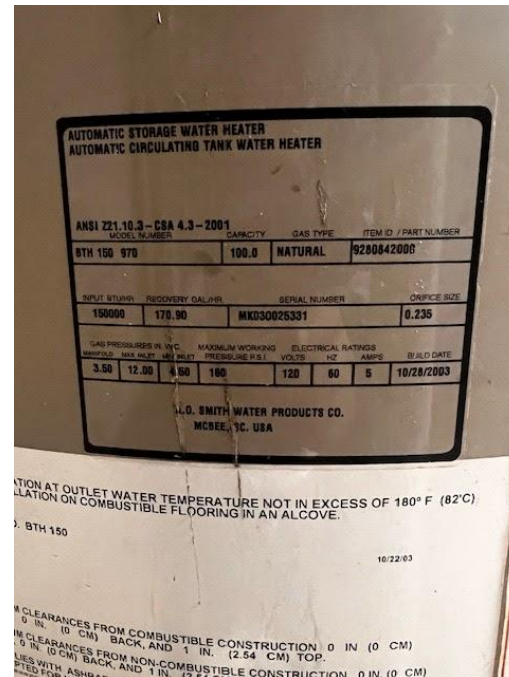
State Aid: \$0 (0%)

Need: Long Term (6+ years)

Start: 7/26

End: 8/26

- Hot water piping must be completed with the new boilers & Airedale units
- Existing water heater is extremely aged and should be replaced
- Requested by Facilities & Architect/Engineer



TBS

PROVIDE 2 TOILETS IN 2 CLASSROOMS

Priority 1

Facilities

Cost: Existing State Grant

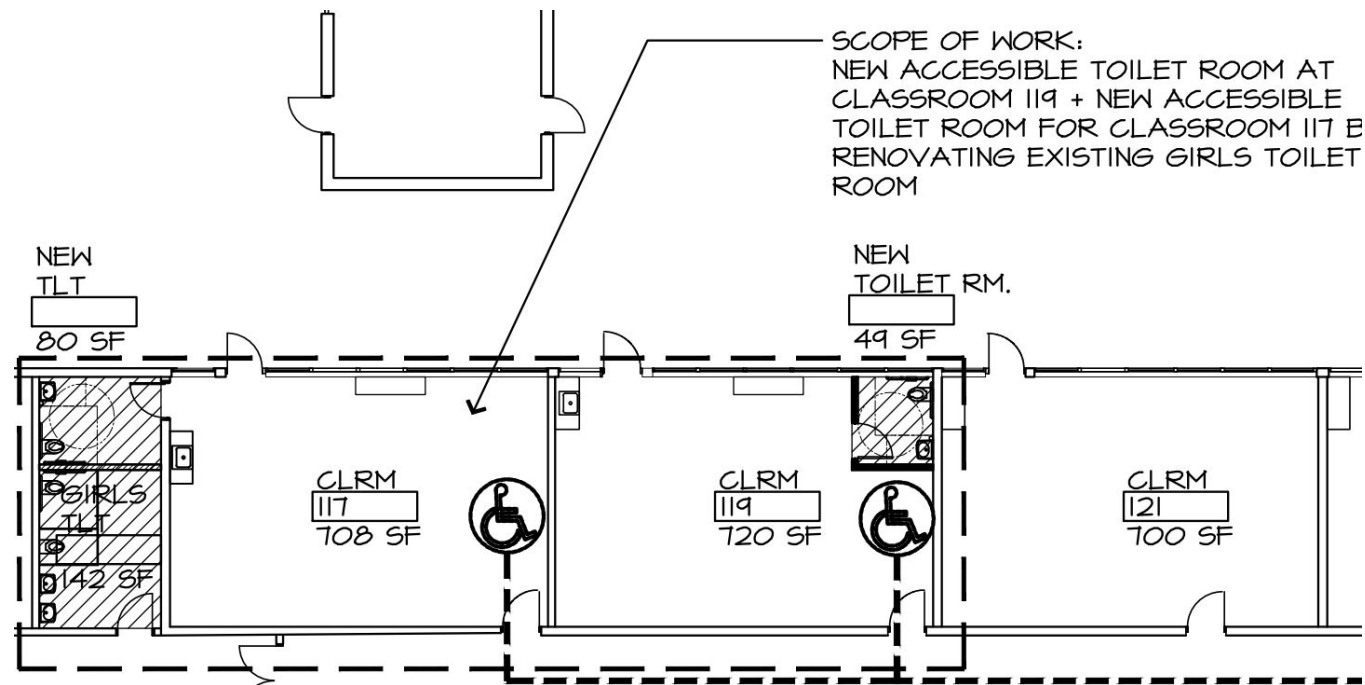
State Aid: 40% Eligible

Need: Short Term (1-2 years)

Start: 7/27

End: 8/27

- This is single occupancy toilet in 2 classrooms (80 sq. ft), and approved ROD/SDA Grant (40%)
- Toilets are needed for special needs, kindergarten and preschool for code compliance
- Alternative use of facilities has been utilized in past years to maintain compliance
- Requested by Principals, Administration & Architect/Engineer



TBS

NEW NETWORK SWITCHES (No. 37)

Priority 2

Facilities

Cost: Federal E-Rate

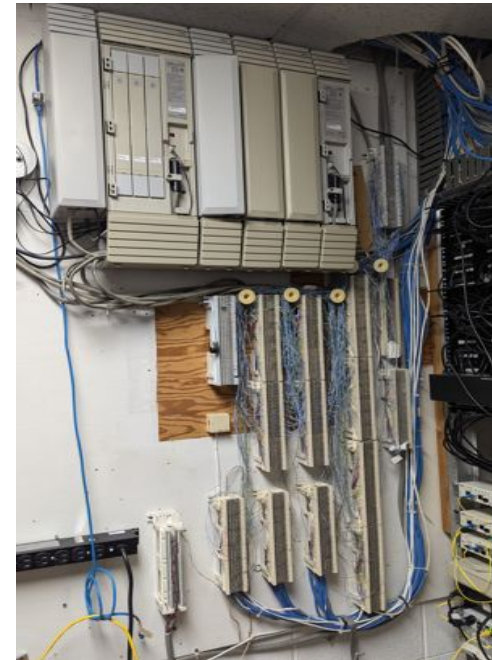
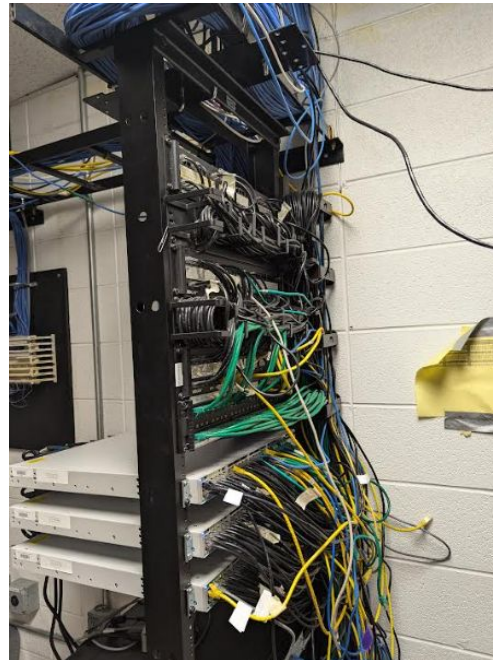
Federal Aid: 40% Eligible

Need: Medium Term (3-5 years)

Start: 7/27

End: 8/27

- Existing Access Points are nearing end-of-life
- Lack of system support due to age shall expose IT security vulnerabilities
- Reliability and coverage of internet is critical for student learning in 21st century
- Requested by IT



TBS

REPLACE EXISTING WIRELESS ACCESS POINTS FOR INTERNET (No. 36)

Priority 2

Facilities

Cost: Federal E-Rate

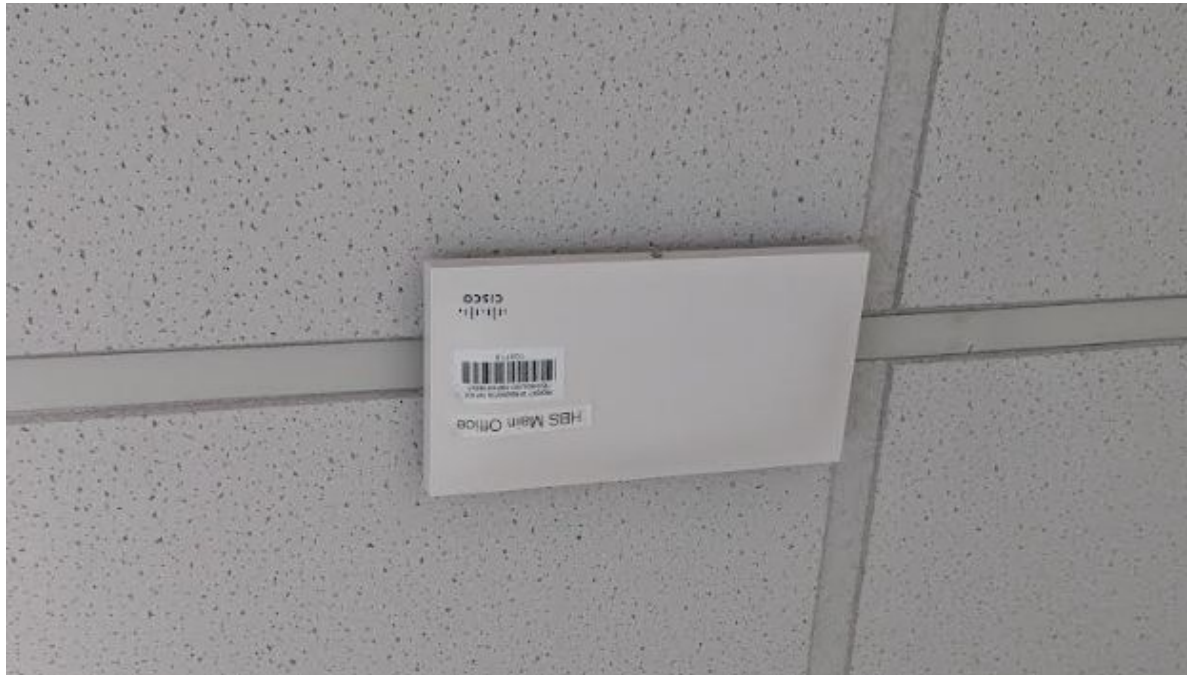
Federal Aid: 40% Eligible

Need: Short Term (2-3 years)

Start: 7/27

End: 8/27

- Existing Access Points are nearing end-of-life
- Lack of system support due to age shall expose IT security vulnerabilities
- Reliability and coverage of internet is critical for student learning in 21st century
- Requested by IT



TBS

REPLACE EXISTING WATER FOUNTAIN WITH BOTTLE FILLER STATIONS

Priority 2

Infrastructure/Maintenance

Cost: Cafeteria Funds

State Aid: \$0 (0%)

Need: Long Term (6+ years)

Start: 7/26

End: 8/26

- Water fountains in some instances are original to building and aged
- Replacement with bottle fillers would include filtration
- Bottle filler is consistent with stainless steel water bottles which are now commonly used
- Requested by Principals & Staff



TBS

UPGRADE AND INSTALL NEW PERFORMANCE THEATER LIGHTING

Priority 2

Student Experience

Cost: Cafeteria Funds

State Aid: \$0 (0%)

Need: Long Term (6+ years)

Start: 7/27

End: 8/27

- Stage lighting is not ideal for student performances, back row of students are in the dark
- System would be lower tiered due to age of students compared to high school or middle school
- Direct benefit to students and performing arts
- Requested by Principals, Administration and Staff



TBS

NEW SOUND SYSTEM FOR CAFETERIA & GYM (No. 41)

Priority 2

Facilities

Cost: Cafeteria Funds

State Aid: \$0 (0%)

Need: Medium Term (3-5 years)

Start: 7/27

End: 8/27

- Current sound is older & losing functionality
- Requested by Facilities, Principal, & Staff



Summary

Referendum Projects	Referendum		State
Three Bridges School (TBS)	Projects		Aid
	\$8,981,545		\$2,430,098
Project	Cost	34% State Aid Eligible?	State Aid
REPLACE INTERACTIVE WHITEBOARDS IN CLASSROOMS	\$181,397	No	
REPLACE EXISTING FIRE ALARM SYSTEM	\$479,193	Yes	\$162,926
INSTALL NEW EMERGENCY BACKUP GENERATOR	\$644,800	Yes	\$219,232
NEW SPECIAL NEEDS PLAYGROUND	\$631,800	No	
NEW GYM ROOF	\$362,700	Yes	\$123,318
REPLACE EXISTING EXTERIOR DOORS	\$169,000	Yes	\$57,460
REPLACE WINDOWS IN OLD WING	\$1,274,000	Yes	\$433,160
REPLACE 2004 ADDITION HVAC ROOF TOP UNITS	\$780,000	Yes	\$265,200
INSTALL NEW PAVED PATH TO PLAYGROUND	In Playground	No	
RENOVATE TOILETS - GRADE 1	\$585,000	Yes	\$198,900
REPLACE 2010 CLASSROOM AIREDALE HVAC UNITS	\$1,248,000	Yes	\$424,320
REPAVE AT SCHOOL	\$276,000	No	
REPAVE PLAYGROUND AREAS	In Paving	No	
INTEGRATED BUILDING MANAGEMENT SYSTEM	\$798,655	Yes	\$271,543
REPLACE ROOF OVER CLASSROOM WING	\$156,000	Yes	\$53,040
NEW WINDOW TREATMENTS	\$400,000	No	
REPLACE 2 GYM REZNOR WITH NEW RTU AND A/C HVAC	\$650,000	Yes	\$221,000
INSTALL OUTDOOR EXTERIOR LIGHTING	\$135,000	No	
REPLACE CORRIDOR DOORS - GRADE 1	\$55,000	No	
REPLACE CORRIDOR DOORS - GRADE 2-3 WING	\$55,000	No	
CUBBIES IN FIRST GRADE + PRE K CLASSROOMS	\$100,000	No	