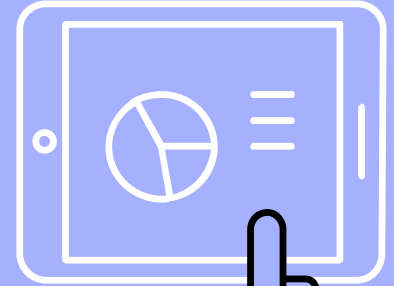
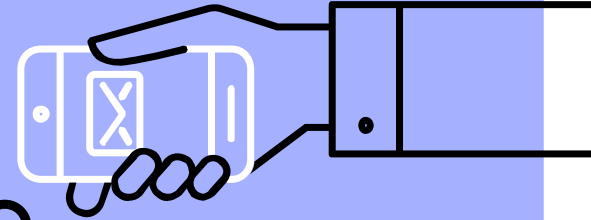
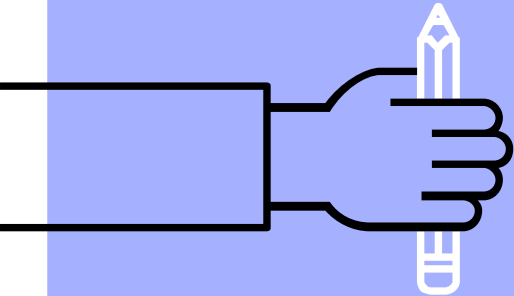
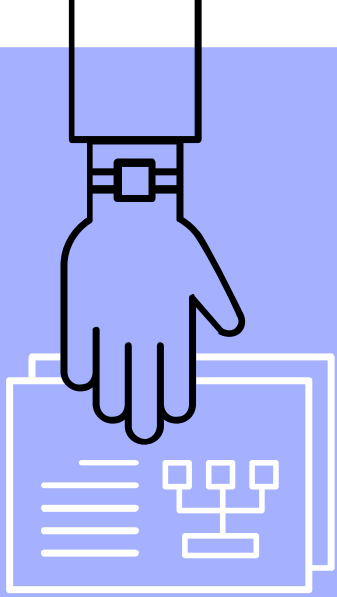


Managing the COVID-19 Crisis: Impact on Schools

Superintendent Coffee Chat, December 1, 2020



What is a coffee chat?

- ▶ Informal: grab a cup of coffee
- ▶ Presentation: we start with a short presentation
- ▶ Conversation: we leave time for questions and casual conversation

Enjoy some time together



Talking Points

Where can parents find information?

What are the successes we've seen in schools?

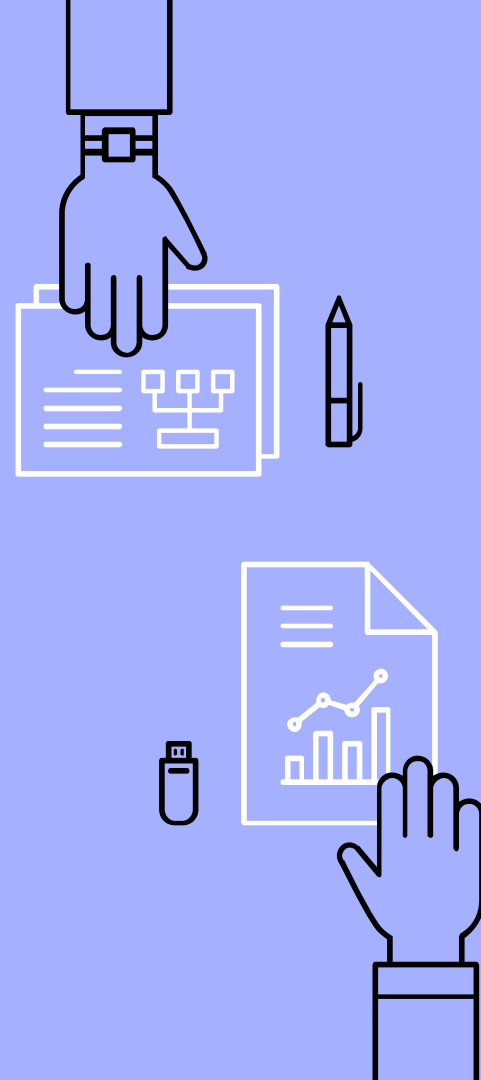
How does contact tracing work in schools?

How is the district monitoring instruction?

What is the district doing for the social and emotional needs of students?

How is the district enhancing technology?

A look at some COVID monitoring tools.



Information: Where can I find it?

Our district website (main page)

Superintendent's Corner

COVID 19 Update Video

<https://www.youtube.com/watch?v=64ufH9LmozQ&t=257s>

NJ Department of Health Dashboard

https://www.nj.gov/health/cd/topics/covid2019_dashboard.shtml

COVID-19 Activity Reports

<https://www.nj.gov/health/cd/statistics/covid/>



Success for Schools

We observe low levels of school transmission.

Statewide there were 66 school outbreaks, 1 from Hunterdon County.

Social distancing and wearing a mask work to prevent transmission.

Enhanced cleaning protocols ensure surfaces are 'germ' free.

Our *Readington Ready* Plan is working.

Consultation and communication with the Health Department occurs:

- ▶ Weekly Superintendent calls
- ▶ Nurse contact to DOH nurses



Contact Tracing

Notification comes from parents or from the DOH.

Our response to identify close contacts:

- ▶ Gather class seating charts
- ▶ Gather bus seating charts
- ▶ Review the student(s) schedule and interview teachers
- ▶ Review the restroom sign-out log
- ▶ Interview the positive student(s) or parent(s) (DOH responsibility)
- ▶ Gather all data and report to the DOH



Instruction and Program

What are we doing to monitor the teaching and learning process during hybrid learning?

- ▶ Use of our instructional coaches
- ▶ Collection of student achievement data
 - Math i-Ready diagnostic
 - ELA running records and writing benchmarks
- ▶ Monitoring our pacing



Social-emotional learning

We have instituted check-ins with students quarterly or more often if needed.

We have developed 4 SEL parent talks throughout the school year.

Child Assault and Prevention (CAP) program at RMS.



Technology: Keeping us up to date

Purchased of more Chromebooks to replace older devices.

Purchased of iPads via a grant for Kindergarten.

Developed a "Technology Ambassadors" program.



NJDOH Activity Report

It is a weekly report that monitors the COVID-19 Activity Level Index (CALI)

<https://www.nj.gov/health/cd/statistics/covid/>



STATE OF NEW JERSEY
DEPARTMENT OF HEALTH

Governor Phil Murphy · Lt. Governor Sheila Oliver
NJ Home | Services A to Z | Departments/Agencies | FAQs

Search

How do I...?



About Us

Your Health

Healthcare Facilities & Services

Public Health

Chief State Medical Examiner

Improving Health Through Leadership and Innovation

Communicable Disease Service

Home

Diseases & Health Topics A-Z List

Disease Reporting

Immunization Requirements

Education & Training

Statistics, Reports & Publications

Forms

Home · Statistics, Reports & Publications · COVID-19 Weekly CALI Reports · COVID-19 Activity Level Index (CALI) Weekly Reports

Statistics, Reports & Publications

COVID-19 Weekly CALI Reports

Influenza-like Illness Weekly Reports

Vector-borne Surveillance Reports

Reportable Disease Statistics

Animal Rabies Statistics

Immunization Status/Exemption Reports

Publications

COVID-19 Activity Level Index (CALI) Weekly Reports

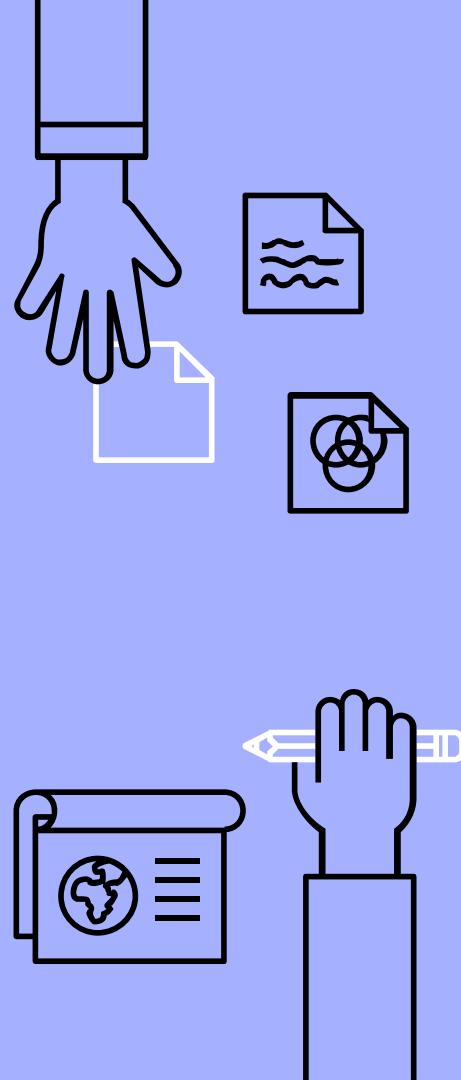
The COVID-19 Weekly Activity Report provides data on COVID-19 transmission risk by six regions. This report is posted on Thursdays and uses Morbidity and Mortality Weekly Report (MMWR) dates, which are from Sunday to Saturday. MMWR dates are commonly used by the Centers for Disease Control and Prevention (CDC) to standardize weekly reporting across years.

Weekly COVID-19 Activity Reports 2020-2021

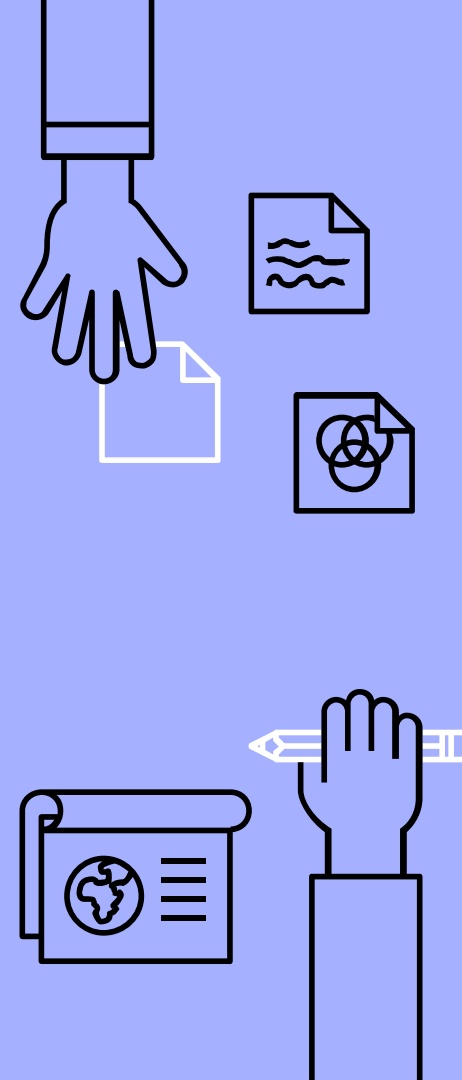
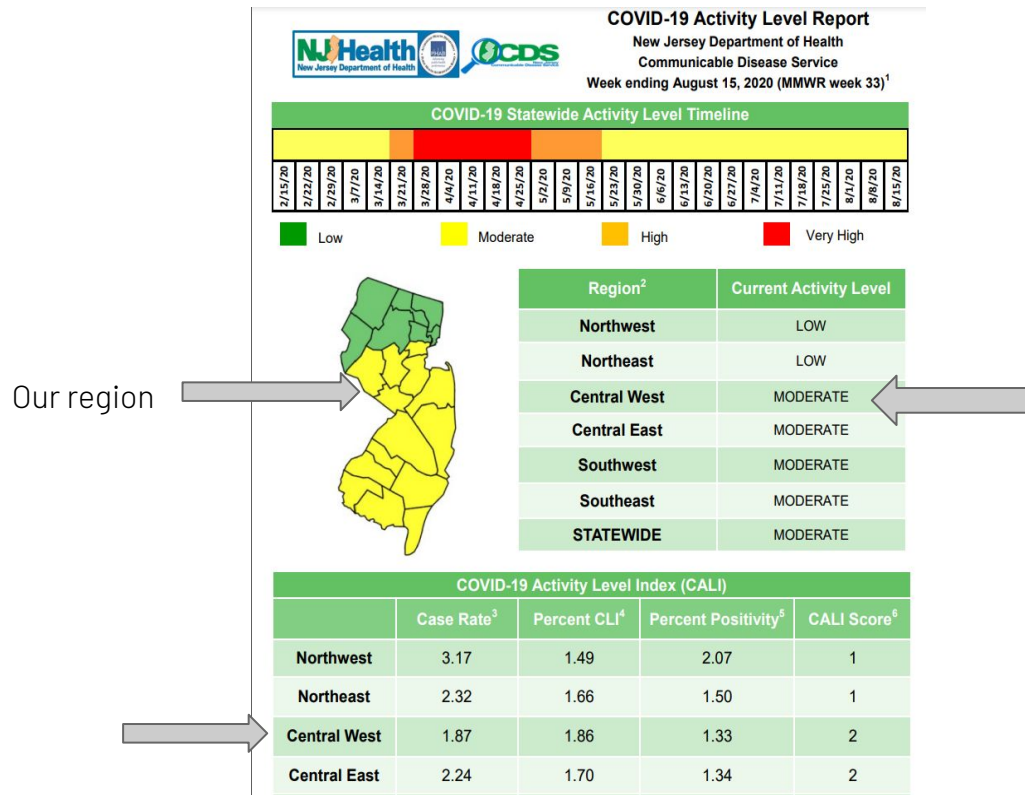
- COVID-19 Activity Report Week 47 (MMWR week ending November 21, 2020)
- COVID-19 Activity Report Week 46 (MMWR week ending November 14, 2020)
- COVID-19 Activity Report Week 45 (MMWR week ending November 7, 2020)
- COVID-19 Activity Report Week 44 (MMWR week ending October 31, 2020)
- COVID-19 Activity Report Week 43 (MMWR week ending October 24, 2020)
- COVID-19 Activity Report Week 42 (MMWR week ending October 17, 2020)
- COVID-19 Activity Report Week 41 (MMWR week ending October 10, 2020)
- COVID-19 Activity Report Week 40 (MMWR week ending October 3, 2020)
- COVID-19 Activity Report Week 39 (MMWR week ending September 26, 2020)
- COVID-19 Activity Report Week 38 (MMWR week ending September 19, 2020)
- COVID-19 Activity Report Week 37 (MMWR week ending September 12, 2020)
- COVID-19 Activity Report Week 36 (MMWR week ending September 5, 2020)
- COVID-19 Activity Report Week 35 (MMWR week ending August 29, 2020)
- COVID-19 Activity Report Week 34 (MMWR week ending August 22, 2020)
- COVID-19 Activity Report Week 33 (MMWR week ending August 15, 2020)
- COVID-19 Activity Report Week 32 (MMWR week ending August 8, 2020)

Why is the report important?

- ▶ Divides the state into six (6) regions where COVID-19 activity is monitored. This allows for more local metrics.
- ▶ Contains easy-to-use color coding.
- ▶ There are three (3) indices that make up the CALI score: case rates, percent of COVID-like illness, and percent positive.
- ▶ Schools launch protocols based on the weekly color code.



What does the report look like?



Activity Report

November 14, 2020

Color code: orange

The majority of the state turned orange. By the week of November 21, the entire state was orange.



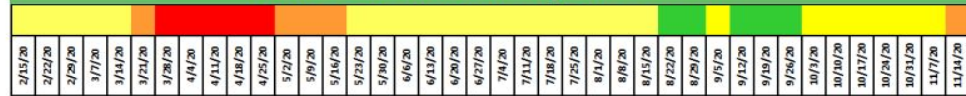
COVID-19 Activity Level Report

New Jersey Department of Health

Communicable Disease Service

Week ending November 14, 2020 (MMWR week 46)¹

COVID-19 Statewide Activity Level Timeline



Low

Moderate

High

Very High



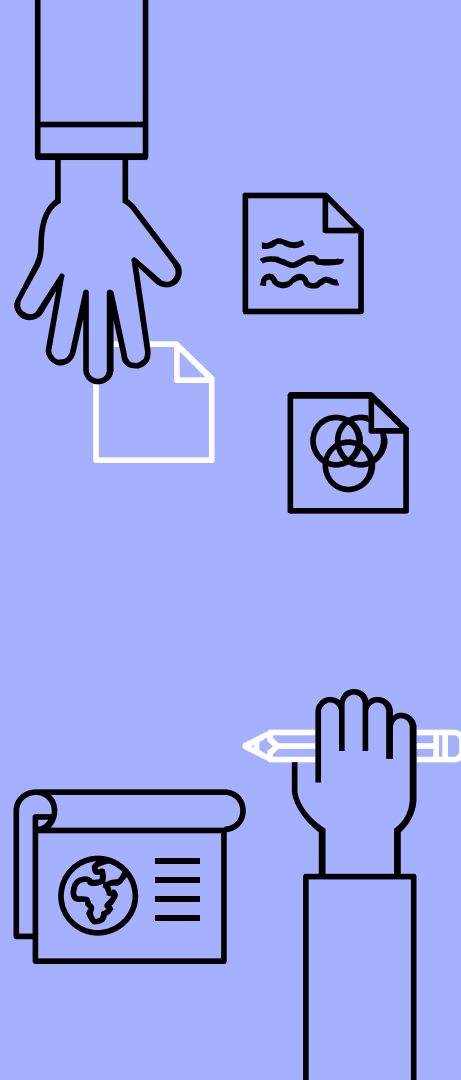
Region ²	Current Activity Level
Northwest	HIGH
Northeast	HIGH
Central West	HIGH
Central East	HIGH
Southwest	HIGH
Southeast	MODERATE
STATEWIDE	HIGH

COVID-19 Activity Level Index (CALI)

	Case Rate ³	Percent CLI ⁴	Percent Positivity ⁵	CALI Score ⁶
Northwest	34.03 ●	6.81 ○	10.39 ○	3
Northeast	32.83 ●	6.44 ○	10.04 ○	3
Central West	29.72 ●	5.50 ○	8.52 ○	3
Central East	27.87 ●	4.76 ○	8.68 ○	3

What does the change to orange mean?

- ▶ The color coding assists schools with the response to COVID-19.
- ▶ Green and yellow colors have the Department of Health (DOH) contact tracing only positive cases.
- ▶ Orange color has the school, in collaboration with the DOH, contact tracing presumptive positive cases.
- ▶ Presumptive positive cases are those cases exhibiting symptoms.



Dashboard

Cases and Trends
"Tab" shows:

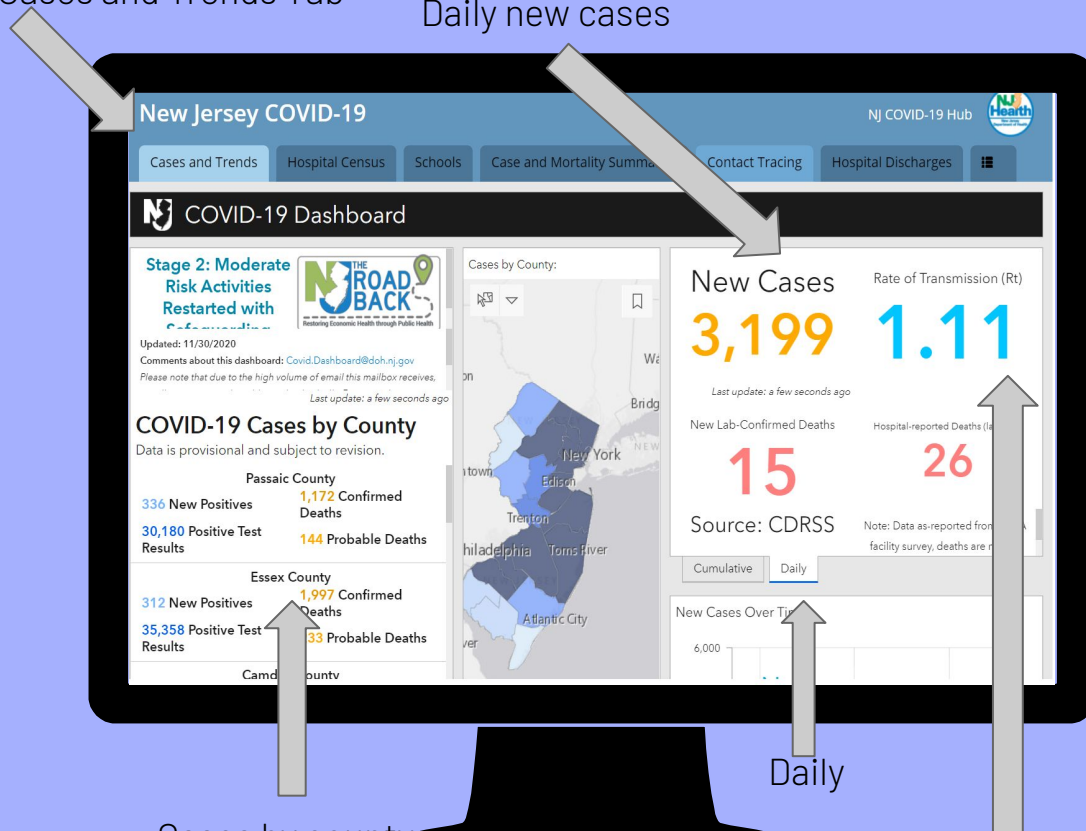
Daily new cases
statewide

Cases by county

Transmission rate

Cases and Trends Tab

Daily new cases



Cases by county

Daily

Transmission Rate

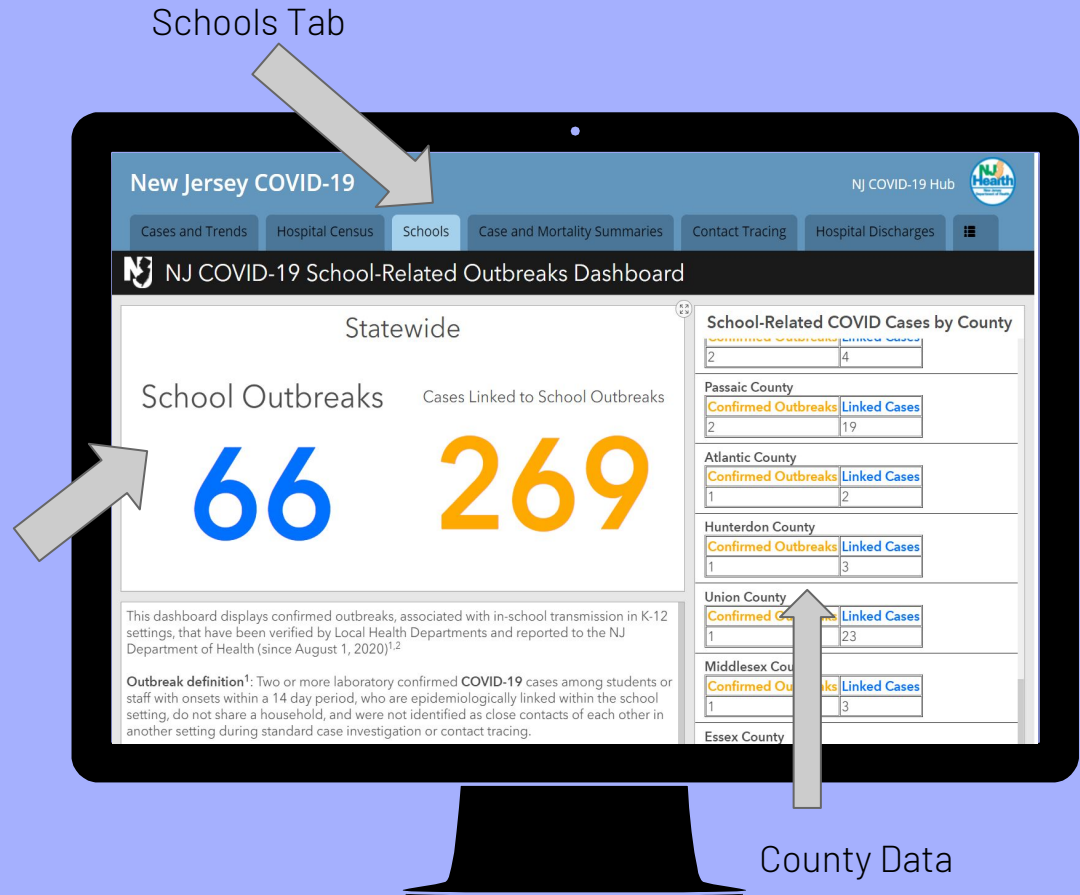
Dashboard

Schools "Tab"
shows:

School outbreaks
statewide

School outbreaks by
county

Cases linked to
schools



THANKS!

Any questions?

