



# HUNTERDON PARKS HARBINGER



Park program information from June through September 2019

**Check our website for more detailed information!**

*Like us on Facebook at Hunterdon County Parks*

Future program releases: September 1, 2019 and February 1, 2020



## FREE COMMUNITY YOGA on the SUMMER SOLSTICE

Friday, June 21, 6:00 PM to 8:00 PM, Arboretum gardens,

ages 12 through adult, free, guest presenter Yoga Essence of Lebanon

In the spirit of giving to the community, Yoga Essence of Lebanon and Hunterdon County Parks and Recreation are co-sponsoring this free yoga event. Let's gather in the Arboretum gardens on the International Day of Yoga / Summer Solstice for 108 sun salutations to pause, unplug and find our focus. Surya Namaskar, also known as sun salutes, is a key asana sequence in yoga. It is a very systematic technique combining twelve asanas in a sequence. Surya refers to the sun and Namaskar denotes bowing down. Yogis devote this yoga practice for the appreciation, paying of honor and reverence to the source of all forms of life, the Sun. It is commonly practiced to strengthen, energize, and balance the body, mind, and breath. The Sun Salutations can be a very good workout for the cardiovascular system or it can be very relaxing and reflective when executed at a slower pace. This session is suitable for both beginners and yogis with an established practice. Bring yoga mat, towel or blanket and water to drink. Rain location, Deer Path Park.

Pre-registration is required.



## NATURE MEDITATION TOURS AT PARKS \*NEW

Sundays, 10:00 AM to 11:30 AM, teens and adult, \$16 per session, instructor Lisa Perry

June 9 **HOFFMAN PARK**

MAIN ENTRANCE: 26 Baptist Church Road, Hampton (Union Twp.)

July 14 **TEETERTOWN PRESERVE**

30 Pleasant Grove Road, Port Murray (Lebanon Twp.) at the stone house

July 28 **MIQUIN WOODS PRESERVE**

326 Newport Road, Glen Gardner (Lebanon Twp.)

August 11 **POINT MOUNTAIN RESERVATION**

80 Point Mountain Road, Washington (Lebanon Twp.)

August 25 **RAIN-DATE (replacement date if we cancel due to rain)**

This summer, reconnect to the beauty of nature and to your own inner peace during this exploration of parks in the northern section of Hunterdon County. Each session includes a silent hike with pauses for guided meditation along the way. Beginners are welcome. Bring a towel or mat to sit on. Once you have found your Zen, you may want to continue exploring the park further on your own. Pre-registration is required.



## MIDSUMMER NIGHT SINGING BOWLS MEDITATION

Wednesday, July 31, 7:00 PM to 8:00 PM, Deer Path Park (Cedars Pavilion), teens and adult, \$12, instructor Lisa Perry

On a midsummer evening, relax and absorb the healing vibrations from crystal and Tibetan singing bowls. As sunset approaches, everyone is invited to participate in a singing bowl circle. Bring a mat or towel to lie/sit on and your own singing bowl (optional). If it is raining we will hold the meditation under Cedars pavilion.

Pre-registration is required.

**BOOKMOBILE STOP AT THE ARBORETUM** Tuesdays from 10:00 AM to 12:00 PM, see page 18

To join our monthly email list, email [parks@co.hunterdon.nj.us](mailto:parks@co.hunterdon.nj.us).

Let us deliver *The Harbinger* and other program updates right to your inbox!

Names and addresses of county-held mailing lists are subject to disclosure pursuant to the NJ Open Public Records Act.

## HUNTERDON COUNTY DIVISION OF PARKS & RECREATION

DEPARTMENT OF PLANNING AND LAND USE

Mailing Address: P.O. Box 2900, Flemington, NJ 08822-2900

Office Location: 1020 State Highway 31, Lebanon, NJ

Telephone (908) 782-1158 · Fax (908) 806-4057

Email: [parks@co.hunterdon.nj.us](mailto:parks@co.hunterdon.nj.us) · [www.co.hunterdon.nj.us](http://www.co.hunterdon.nj.us) (click on "Parks & Recreation")



**Pre-registration required & children must be accompanied by an adult, unless otherwise noted**

## VOLUNTEER OPPORTUNITY

### ANNUAL TRAILS DAY EVENT

Saturday, June 8, 8:00 AM to 1:30 PM,

Teetertown (meet at the stone house), ages 12 and up (minors must be accompanied by an adult), free!

Help Hunterdon County Division of Parks and Recreation install a new trail from Crystal Springs to Point Mountain. The trail corridor has been made possible with easements established with Cross Roads Camp & Retreat Center. There will be plenty of work for all as we will form multiple work groups to focus on different sections of the trail. While the trail will use field edges and an old logging road, about  $\frac{3}{4}$  mile needs to be established. The focus of the project will consist of cutting back brush and vegetation and defining the tread-base for the trail. To aid in project tasks, volunteers are asked to bring their own loppers and clippers. A registration form or volunteer form is required to sign up for the event to help us track participants and aid in planning the event. (For interested groups, each member or family must fill out a separate volunteer form.) Thanks to generous donations, breakfast and lunch will be available. Meet at the Teetertown stone house, 30 Pleasant Grove Road, Port Murray (the middle entrance).



### *Table of Contents*

#### Page

1. Yoga, Meditation, Singing Bowls
2. Volunteer Opportunities
3. Summer Nature Program
- 4 & 5. Summer Camps: Fine Arts & Lego & Sports
- 6 & 7. Concert Series... FREE!
8. Camping Trips
9. Canoeing & Kayaking, Employment Opportunity
10. CPR & First Aid, Adult Art, Recreation Walks
11. Photography Classes, Homeschool Environmental Series, Touch-A-Truck, Public Lands Day Open House
- 12 & 13. Nature Programs
14. Tot Walks, Nature Club, Group Programs
15. Birding Trips, Thursday Morning Birding Walks
- 16 & 17. Van Trips
18. Square Dancing, Discount Amusement Park Tickets,  
**BOOKMOBILE STOP AT ARBORETUM new!**
19. Reservable Facilities
20. Registration Form

#### **PRE-REGISTRATION IS REQUIRED**

Programs require advance registration, unless otherwise stated. Forms are available on the back of this brochure, at our office, or online: [www.co.hunterdon.nj.us](http://www.co.hunterdon.nj.us) (click on "Parks & Recreation"). **Cash or check only.**

## COUNSELORS-IN-TRAINING (CITs) VOLUNTEER OPPORTUNITY



### SUMMER NATURE PROGRAM

#### COUNSELORS-IN-TRAINING (CITs)

A volunteer opportunity for teens entering 10<sup>th</sup>, 11<sup>th</sup>, and 12<sup>th</sup> grades. Counselors-in-Training (CITs) will be selected for each of our two Summer Nature Camp sites (Echo Hill and Teetertown). Have fun outdoors while building your resume. CITs are required to attend an evening training session on Thursday, May 30 from 6:00 PM to 9:00 PM at Echo Hill. Must be able to commit to a minimum of two weeks during the camp season. To apply: Submit an Individual Volunteer Application with a letter of recommendation from a teacher or employer. Applications are available at the Arboretum or on our website [www.co.hunterdon.nj.us](http://www.co.hunterdon.nj.us) (Click on "Volunteer Opportunities.")

#### COUNSELORS-IN-TRAINING (CITs) for RECREATION CAMPS

This is a volunteer opportunity for teens entering 9<sup>th</sup> through 12<sup>th</sup> grades. Counselors-in-Training (CITs) will be selected for Performance Camps, Craft Camps, Art Camps, Basketry Camp, and LEGO Camp. Teens will assist counselors in many aspects of running camp. This is a great opportunity for on-the-job experience and a boost for your résumé. There will be a mandatory CIT training on Wednesday, June 19, 6:00 PM to 9:30 PM at the Arboretum. To apply: submit an Individual Volunteer Application with an attached recommendation from a teacher or employer. You can pick up an application at the Arboretum or from our website: [www.co.hunterdon.nj.us](http://www.co.hunterdon.nj.us) (click on "Parks & Recreation"). For more information, contact Liz Fulmer, [lfulmer@co.hunterdon.nj.us](mailto:lfulmer@co.hunterdon.nj.us) or (908) 782-1158.

## SUMMER NATURE CAMP

### SUMMER NATURE PROGRAM (SNP) CAMP WEEKS STILL AVAILABLE

as of 5/6/19

**Echo Hill** has openings the week of...

Nature Bugs: 7/22, 8/5

Nature Discovery: 6/24, 7/1, 7/8, 7/15, 7/29, 8/12

Pioneers: 6/24, 7/1, 7/8, 7/15, 7/29

Junior Explorers: 6/24, 7/8, 7/22, 8/5

Environmental Camp: 7/8

**Teetertown** has openings the week of...

Nature Bugs: 7/22, 8/5

Nature Discovery: 6/24, 7/1, 7/8, 7/15, 7/22, 7/29, 8/5, 8/12

Pioneers: 6/24, 7/1, 7/15, 7/29, 8/5, 8/12

Junior Explorers: 6/24, 7/8, 8/5

Environmental Camp: 6/24

**SUMMER NATURE CAMP** allows kids entering kindergarten through grade 10 to connect with and explore the natural world. Leaders facilitate hands-on activities that foster kids' innate curiosity about nature and wildlife. Leaders are instructed in guiding children in the outdoors and are certified in First Aid and CPR. Group size is a maximum of 10-12 campers, with each leader being aided by an assistant or volunteer counselor-in-training (CIT). Special canoeing instructors host the paddling clinics and canoe trips with our older campers. Sessions are available at both Echo Hill Park and Teetertown Nature Preserve. Echo Hill is located at 42 Lilac Drive in Clinton Township. Teetertown is located at 30 Pleasant Grove Road in Lebanon Township. Both parks offer diverse habitats to explore, including stream, pond, field, and forest areas. Note: Camp is held Monday through Friday—no weekends. ~ **Camp will not be held on Thursday, July 4th; these camp weeks are \$20 less.**

#### Important Registration Information

` Download a set of registration forms (3) from our website, or pick them up at the Arboretum. \* A regular Parks Division program registration form **cannot** be used for Summer Nature Camp.

` Participants may now be enrolled in additional sessions as available.

` All cancellations by participants are subject to a 30% service charge. Cancellations must be in writing.

` **Cancellations made less than one week prior to the start of your child's session will not receive a refund.**

#### NATURE BUGS one-week sessions

Children entering kindergarten, 9:00 AM to 11:30 AM, \$125.

The Nature Bugs program is the perfect half-day adventure for your young nature enthusiast. Our Park Naturalists teach about local plants and animals through hikes, observations, crafts, and games. A safe and fun way to foster your child's interest in the natural environment.

#### NATURE DISCOVERY one-week sessions

Children entering grades 1 & 2, 9:00 AM to 3:30 PM, \$190.

This full-day program allows campers to explore all the wonders that the parks have to offer. From searching for wildlife to toasting s'mores, Nature Discovery campers enjoy a great introduction to the world outdoors.

#### PIONEERS one-week sessions

Children entering grades 3 & 4, 9:00 AM to 3:30 PM, \$190.

Pioneers enjoy activities that foster understanding of habitats, adaptations, and other ecological concepts. Favorite activities such as shelter-building help Pioneers develop their outdoor skills.

#### JUNIOR EXPLORERS two-week sessions

Children entering grades 5 & 6, 9:00 AM to 3:30 PM, late pick up on trip days, \$345.

These two-week sessions give campers the chance to increase their understanding of nature as well as their outdoor "know-how." Juniors learn basic canoeing skills on the park ponds before embarking on a day trip on a local river. A field trip allows Juniors to discover nature beyond the County Parks. The Junior Explorer experience culminates in a campout on the second Thursday full of fun night-time activities (12:00 PM dismissal the day after the campout). Session A campout will be Tuesday, July 2 with a 12:00 pm dismissal on Wednesday, July 3. No camp on July 4 and a regular 9:00-3:30 day July 5.

#### SENIOR EXPLORERS FULL

#### ENVIRONMENTAL CAMP two-week sessions

Teens entering grades 9 & 10, 9:00 AM to 3:30 PM, \$395

Teetertown overnights: Thursday week 1 & Tuesday week 2.

Echo Hill overnights: on Thursdays.

Packed with learning and adventure this intensive two-week program begins with team-building activities and the opportunity to participate in a high-ropes personal challenge course. A visit to Sandy Hook to learn about ocean and marsh ecology. Wildlife studies and outdoor skills practice. Backpacking during an overnight in the Pine Barrens. A flatwater canoe clinic prepares campers for a canoe-camping trip. Focuses on the importance of ecological stewardship and individual responsibility.

*Check out the videos of each session to learn more! View at: <http://www.co.hunterdon.nj.us/depts/parks/Camps.html>.*



## SUMMER CAMPS: FINE ARTS

### CRAFT CAMP FOR TEEN CRAFTERS

June 24 to June 28, ages 11 to 15

### CRAFT CAMP for BLOOMING YOUNG CRAFTERS

July 8 to 12, ages 8 to 10

9:00 AM to 2:00 PM, Arboretum, \$160

(includes materials)

Instructor: Liz Braidwood Fulmer

This unique program will expose your child to a multitude of crafts. Young artists will immerse themselves creating one-of-a-kind masterpieces. An eclectic mix of artistic media such as clay, felt, gourds, tile, wood, rocks, vines, and recycled items keep interest and enthusiasm high! New projects every year! Sculpt with clay, create with beads, weave a basket or two, and work on visual balance designing with things from nature. Campers should bring a drink, snack, and lunch. We encourage reusable containers. Send children in "old" clothing and shoes that can get a little dirty.



### 3-DAY BASKETRY CAMP

Monday to Wednesday, July 1 to July 3, 9:00 AM to 2:00 PM, Arboretum, ages 11 to 15, \$96 (includes materials)

Instructor: Liz Braidwood Fulmer

Come and explore how to make baskets and create unique very useful pieces of art. In this camp we will explore different basket making techniques and materials. Students will make three different baskets, each with their personal color design choice.



### ART CAMP FOR YOUNG ARTISTS

**Session A:** July 29 to August 2, **Session B:** August 5 to 9 9:00 AM to 11:00 AM, Arboretum, ages 6 to 10

### ART CAMP FOR ARTISTS-IN-TRAINING

**Session A:** July 29 to August 2, **Session B:** August 5 to 9 11:15 AM to 1:15 PM, Arboretum, ages 11 to 15

Either camp \$110 (includes materials)

Campers learn the principles of painting and drawing in a classroom and outdoor setting, using pencil, charcoal, and paint on a variety of still lifes. We will increase campers' understanding of color, composition, and the proper use of materials. Please bring a snack and drink. Remember to dress in old clothing and apply sunscreen. Instructor Lena Shiffman (website [www.lenashiffman.com](http://www.lenashiffman.com)).

### ORCHESTRA CAMP

July 15 to 19, 9:00 AM to 12:00 PM, Hunterdon Central Regional High School, entering grades 7 to 12, \$190  
Orchestra Camp is an excellent opportunity for students to work in small-group situations, as well as working together as a full orchestra. The Hunterdon Youth Orchestra will perform on Friday night on the last day of camp for family and friends. Please specify the instrument when you register; sorry, no piano. Led by the Hunterdon Symphony.

### PHOTOGRAPHY FOR TEENS CAMP (Digital SLR)

July 8 to July 12, 9:00 AM to 12:00 PM, Deer Path Park, ages 13 and up, \$225, Instructor: Jim Rimi

This camp is geared for teens who have a passion for photography. Students will learn how to use their cameras on the manual setting. Students will be taught the use and meaning of aperture, depth of field, shutter speed, lenses, lighting, and composition. Instruction is done in both a classroom setting and in the field. Students will be given photographic assignments and have the opportunity to photograph in different parks using the knowledge just learned in the classroom. Jim will venture out with the students in the field to answer any questions or help that they may need. Group critiques will be conducted to continually improve students' photographic skills. Jim's style of teaching is fun, encouraging, nurturing, and motivating. This is a small hands-on camp which will evoke in the student a new understanding and fervor for photography. Please dress for the weather and walking in the park. A blank memory card dedicated for camp is recommended.



### PERFORMANCE CAMP

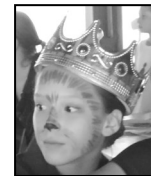
**Session A:** July 15 to 19, entering grades 2 to 5

**Session B:** July 22 to 26, entering grades 6 to 9

Monday to Thursday 9:00 AM to 4:30 PM,

Friday 9:00 AM to 7:00 PM, Deer Path Park, \$250

Children love this Performance Camp taught by Flying Ship Productions, who combine time-tested themes with original music and dialogue and inventive staging and choreography. Campers will have the opportunity to stage a musical with new and original songs, costumes, props, and dances. The week culminates in a performance for family and friends on Friday evening at 6:15, followed by a picnic. In addition to working on the musical, campers also create the set, make costumes, create craft projects, and participate in theatre and water games. Comments from parents of former Performance Campers: "Staff was great! This was my son's favorite camp," and, "We loved the show on Friday Eve! It's nice to see how the children enjoyed their week." Every child who attends Performance Camp is a star!



### CREATIVE THEATRE CAMP

August 19 to 23, 10:00 AM to 2:30 PM (Friday until 4:00 PM), Echo Hill, ages 8 to 12, \$150

Campers will learn stagecraft while creating their own play. This production will be guided by the ideas of the campers; characters, plot, and setting are all based on their ideas. The disciplines of the actor are first introduced through theatre games. Movement, voice, theatre terms, and listening are practiced on day one and built on as the play is developed. We focus this class on listening, not only to the other actors, but also to the audience. The week culminates in a performance for friends and family on Friday at 3:00 PM. Campers should bring a drink and lunch. Instructor Joe Nowosielski (website [www.artstechsolutions.com](http://www.artstechsolutions.com)).

## SUMMER CAMPS: LEGO & SPORTS

### BRICK CITY ENGINEERING CAMP (LEGO®)

July 15 to July 19, 9:00 AM to 12:00 PM, Arboretum, ages 6 to 12, \$150

What would a city be without the architects and engineers who come up with the ideas, designs, plans and building skills to put it all together? This camp celebrates those disciplines. The sky is the limit as the campers are challenged to use their own ideas and skills to build the tallest skyscraper. They will also build vehicles, airplanes, parks, and more as they create a vibrant LEGO city. And when they aren't building, they will be doing related crafts and playing games to keep the action constant. All participants will receive a Bricks 4 Kidz mini-figure to take home.

### NASA MISSION TO SPACE CAMP (LEGO®)

July 15 to July 19, 1:00 PM to 4:00 PM, Arboretum, ages 6 to 12, \$150

Experience a week of learning about and building models inspired by NASA using Bricks 4 Kidz copyrighted model plans. Each day there will be two specific models built, and most will be motorized. In addition to learning about each of the models built, there will be discussions on gravity, thrust, and even space travel and exploring the galaxy. Models will include the Discovery Space Shuttle, a launch pad, Lunar Module, and satellites and the International Space Station. In addition to building models, each day will include space themed games and challenges. All students will take home a mini rocket or Mars rover model kit of LEGO pieces.



### TEAM KIDS ENGINEERING DISCOVERY CAMP

a non-LEGO® program from Bricks 4 Kidz

July 22 to July 26, 9:00 AM to 12:00 PM, Arboretum, ages 7 to 12, \$150

This is a hands-on program for those campers who ask how or why something works. It's about learning different engineering disciplines and then having a great time designing and building a working model. They will work in teams to create a design, build it, test it and try it out with the entire team. They may build a giant maze, create their own electro-magnet or flashlight,



build a balloon powered race car, or design a giant roller coaster and be rated for coolest design, longest race, fastest race, etc. The campers will get to keep some of their projects.

### STOP MOTION VIDEO CAMP

July 22 to July 26, 1:00 PM to 4:00 PM, Arboretum, ages 7 to 12, \$150

Light, cameras, LEGO® action! Use LEGO bricks to tell YOUR story, complete with music, special effects and all your favorite LEGO mini-figure characters! In this unique and creative camp, students will plan, script, stage, shoot, and produce their own mini-movie using Stop Motion Animation. Working in teams of two, students will use LEGO components to build the set and props, then shoot their movie using a digital camera. Teams will use Frames® movie-making software to add special effects, dialog, titles, credits and more. The campers will impress each other with a screening party on the last day of camp. Don't miss your chance to be a movie producer, director, and star rolled into one! All materials supplied by Bricks 4 Kidz of Hunterdon-Somerset. All campers take home a wrist band with at least 1 GB of storage that will have all of the camp's movies downloaded on it.

*Bricks 4 Kidz Camps: Campers who sign up for both the morning and afternoon session in a given week may bring a lunch and stay through the lunch hour for free.*

### HERON GLEN JUNIOR GOLF CAMPS

Heron Glen Golf Course offers summer junior golf camps for children ages 7-16 who want to develop their skills in a fun and enjoyable atmosphere. The camps include lessons on the full swing, short game, and putting, as well as fun games and prizes.

Lunch and camp goodie bags included. Visit [www.heronglen.com](http://www.heronglen.com) for dates, pricing, and registration.



Making lifetime memories at camp!





**43rd MUSIC UNDER THE STARS SUMMER CONCERT SERIES**


**FREE  
CONCERTS**

By Susan L. Fisher

Thursdays, June 27 to August 15

7:00 PM to 9:00 PM

Deer Path Park

**JUNE 27 HUNTERDON SYMPHONY**

When the players in Hunterdon Symphony were asked to come up with their favorite Pops pieces, the program for this summer's Music Under the Stars Concert was the result. These will be your favorites, too! You'll hear film music from Raiders of the Lost Ark, Harry Potter, Pirates of the Caribbean, Star Wars, and Jurassic Park, along with music from Dvorak's New World Symphony, Mozart's Magic Flute, and more! Bring your own blanket or lawn chair and enjoy! [www.hunterdonmusicalarts.org](http://www.hunterdonmusicalarts.org).

**JULY 4 NO CONCERT**

**JULY 11 CAPTAIN JACK**

The Captain Jack Band is a Billy Joel Tribute band consisting of some of the tri-state area's top musicians. In every performance, the band captures the "live concert" arrangements of these timeless hits which captivated tens of thousands to Billy Joel concerts. Every Captain Jack show is packed with all the energy, passion, and interaction of a Billy Joel Concert, represented by three decades of Billy's music.

[www.captainjacktributeband.com](http://www.captainjacktributeband.com).

**JULY 18 SLIPPERY WHEN WET**

Slippery When Wet (NJ), The Ultimate Bon Jovi Tribute Band, is a group of seasoned veterans of the New York and New Jersey music scene. Raised on the same mean streets and reared in many of the same bars and nightclubs as Jon and the band, these experienced rockers bring the same energy, enthusiasm, and New Jersey attitude to the stage as the early Bon Jovi, circa 1986! Since 2001 SLIPPERY WHEN WET (NJ) has toured the USA and the Caribbean and has performed over 500 shows including nightclubs, casinos, large festivals, private parties, and corporate events. [www.ultraartists.com](http://www.ultraartists.com).

**JULY 25 AMISH OUTLAWS**

The Amish practice a tradition called "Rumspringa" (running around) at 16, when they can live free of the strict Amish code before deciding if they want to be baptized into the Amish church. Surprisingly, virtually all of the youths return. But sometimes they don't. Four of the original six members of Amish Outlaws were born and raised in Lancaster, PA and had a strict Amish upbringing. This included no electricity from land lines, no alcohol and no musical instruments, but their spirits were too wild for the Amish lifestyle. Once they trampled in the Devil's Playground, there was no turning back. Since Rumspringa, the Amish Outlaws have become well acclimated to the pleasures and vices of the modern world... music, most of all. From Johnny Cash, JayZ, and Lady Gaga to Bon Jovi and Elvis they will

**43rd MUSIC UNDER THE STARS SUMMER CONCERT SERIES****AUGUST 1 HUNTERDON HARMONIZERS**

Comprised of more than 50 men from Hunterdon & surrounding areas, the Harmonizers have entertained audiences throughout the County for more than 22 years. They have competed in Barbershop Harmony Society events as far as away Indianapolis, Indiana. As a chorus they offer a wide variety of music sung in a cappella & close 4-part harmony. [www.njharmonizers.org](http://www.njharmonizers.org).

**AUGUST 8 THE MORRISTONES**

The Morrystones are an oldies rock band from Morris County, NJ, comprised of students who have been performing all along the east coast for the past six years. The band features baritone Brad Ritschel, band leader and pianist Matt Korzen, bass player Tom McCoy from the University of Delaware, Ryan Grasso on drums, and guitar prodigy Connor Wilson from Whippany Park High School on electric. Songs of Sinatra, Doo Wop classics, hits of The Beatles, and more can be expected from this dynamic ensemble of young musicians.

**AUGUST 15 BEST OF THE EAGLES**

This group of all-stars captures the instrumental and vocal prowess of the biggest California super group of all time! Established in 2012 with veteran musicians from central Jersey, the Best of the Eagles play the music of the Eagles in a very true-to-form tribute show. With six powerful vocals, outstanding harmonies, and great musical accompaniment, The Best of the Eagles is one of the premiere tribute shows around, guaranteed to rock the audience! [www.ultraartists.com](http://www.ultraartists.com).

**RAINY DAY CONCERT INFORMATION IS JUST A “CLICK AWAY!”**

We try our best to hold our concerts outdoors, but sometimes weather conditions dictate that we move inside. These decisions are made during the late afternoon of each concert day. The quickest way to find out this information is to go to our County website: [www.co.hunterdon.nj.us](http://www.co.hunterdon.nj.us). If the internet is not accessible, please call the Park Office and listen to the recording after 4:30 PM by dialing (908) 782-PARK (7275). All indoor concerts will be held at Hunterdon Central High School, 84 Route 31, Flemington NJ, 08822.

**HAVE FUN, BE SAFE, AND BE CONSIDERATE OF OTHERS**

Our concert series has always been a family-oriented program. Please be considerate of your neighbors, so that everyone may enjoy the music and the natural surroundings. If you smoke, make sure the smoke does not bother anyone else. Please keep children in sight at all times, so that their safety is assured, and their play will not disturb others. Please remember that some of our guests may be afraid of dogs, so please observe our park leash and litter pick-up laws, and keep pets under your control at all times. Please note - alcoholic beverages are not permitted!

**DIRECTIONS to Deer Path Park:** 120 West Woodschurch Rd Flemington, NJ 08822

**From the Flemington Area:** At the Flemington traffic circle, take Route 31 North for approximately 4 miles. Turn right onto West Woodschurch Road and follow the signs to Deer Path Park. **From the Clinton Area:** US Interstate 78, take Route 31 South for approximately 6.5 miles. Take right jug handle onto West Woodschurch Road and follow the signs to Deer Path Park.





## CAMPING TRIPS

**OVERNIGHT CANOE TRIP (also Boy Scout Merit Badge)** Saturday, August 10 at 8:00 AM to Sunday, August 11 at 4:00 PM, Arboretum, ages 12 through adult, \$70 (includes dinner Saturday, breakfast and lunch on Sunday)

This trip will leave the Arboretum at 8:00 AM on Saturday, when we will head to the Delaware Water Gap to the put-in. We will paddle for a couple hours, stop to have a picnic lunch (please bring lunch for Saturday), paddle for a couple more hours, and then camp out at one of the wilderness sites on the river. The group will cook dinner and enjoy the nature around us. The next day, we will cook breakfast and head downriver. We will stop and have a picnic lunch (provided). There will be time to swim both days as we travel. All participants must attend a pre-camp meeting on Wednesday, August 7 at 7:00 PM at the Arboretum. On your registration form, please indicate any dietary restrictions and if you will need to borrow a tent. Boy Scouts may obtain their Canoeing merit badge by setting up an additional meeting with Recreation Leader Patrick Eckard.

### BACKPACKING:

#### ROUTE 301 TO 52, NEW YORK

Saturday, September 14 at 8:00 AM to Saturday, September 15 at 5:00 PM, Arboretum, ages 14 through adult, \$55, limit of 8 participants, new section in Clarence Fahnestock Memorial State Park, NY! We will discuss the importance of the Appalachian Mountains while enjoying beautiful scenery. Learn the basics of backpacking as we set up tents, cook, and hike together. The group will meet at the Arboretum Saturday morning and drive to the trail in a county van. We will start in Fahnestock at Route 301 in Putnam County and hike north to RPH shelter where we will spend the night (about 7 miles on Saturday). Sunday, we will hike about 5.1 miles, passing the Stormville Mountain view on the way back to the van. **This is a very strenuous activity, and participants must be in good physical condition and ready to hike 5.1 to 7 miles each day with a full backpack.** All participants must backpack with the following items: clothing, sturdy shoes, raingear, bowl, fork, spoon, at least two liters of water, two lunches, dinner, breakfast, and a sleeping bag. Also, if you have them, please bring: lightweight cooking dishes (mess kit), a stove, a tent, and a backpack. **Participants provide all food. On your registration form, please indicate if you will need to borrow a backpack or two-person tent.** For new backpackers who are used to full day hikes, or experienced backpackers who want to hike with a group and expect to hike at the pace of the group. Participants who have not backpacked with Hunterdon County Parks in the past can expect a phone call from leader Laura Bush to discuss the trip and expectations.

#### SYNCHRONOUS FIREFLIES CAMPING & HIKING TRIP

Saturday, June 29 at 12:00 PM to Monday, July 1 at 3:00 PM, Arboretum, ages 10 through adult, \$160

The Synchronous Firefly (*Photinus carolinus*) is only found in a few places in the U.S. In 2012, it was confirmed in Allegheny National Forest in Pennsylvania. As individual females synchronize with males nearby, waves of alternating bright light and darkness seem to travel across the landscape. These insects flash as a group about six times over two to four seconds, followed by a dark pattern of eight to 12 seconds. Another unusual species in the forest is the Chinese Lantern, of which the males are low and slow-flying, giving one-second, bluish-green glows repeated every 2 to 5 seconds. On this camping trip, we will hope to see both species of fireflies. We will meet at the Arboretum and drive about five hours to the Kellettville Campground, a rustic campground with a portajohn but no electricity or water. This campsite is on a stream so we will provide a water filter for fresh water. On Saturday, we will arrive in time to set up camp and cook dinner (please eat lunch before the trip or bring it to eat in the car). Saturday night we will go on a guided walk to see the Synchronous Fireflies at about 10:00 PM. Sunday we will have the option of a six-mile day hike (with leader Laura), a two-mile day hike, or enjoying the campsite. At night, we will have a second opportunity to see the 15 species of fireflies the Alleghenies offer from in and around our campsite. Monday we will drive back home, stopping at a casual restaurant on the way. Participants will need to provide dinner Saturday and Sunday, breakfast Sunday and Monday, lunch Sunday, and bring money for the restaurant Sunday lunch. We will bring one cooler and a stove for participants to share; please limit yourself to a few refrigerated items. Participants should also bring only one bag of belongings that includes a sleeping bag, tent, clothing, sturdy shoes, raingear, two liters of water, and eating/cooking dishes. Let us know if you need to borrow a tent.





## CANOEING & KAYAKING

Join the Parks on the river where we have been paddling for 40 years. It is fun, educational, and great exercise! Spend a day with nature. Just bring water, lunch, and a smile—we will do the rest. We supply the canoes, kayaks, gear, training, and transportation. Our experienced leaders teach the ways of currents and eddies and how to paddle mankind's oldest craft, with a few new tricks. Please indicate on your registration form if you would like a kayak.



### RIVER DAY TRIPS

8:15 AM to about 3:30 PM (give or take an hour), Leave from Arboretum, ages 8 through adults, \$40 per trip

\*New for 2019! If you purchase 3 river trips at full price, you will get \$5 off any other river trip for 2019. Must purchase all at the same time. If the trip is canceled, you must move to another trip.

Your leaders will fit you with a lifejacket and paddle and then drive to the river, where they will discuss maneuvering techniques and canoe safety. Our leaders will guide you down the river. We paddle for about two hours, stop for lunch, and paddle for about two more hours. We are flexible with our time, which depends in part on natural forces, such as wind speed and water level.

**Sun., June 16:** Delaware, Kingwood to Bull's Island

**Sat., June 29:** Upper South Branch or Musconetcong

**Sun., July 14:** Lehigh River

**Sat., July 27:** Merrill Creek Reservoir

**Sun., Aug. 11:** Delaware, Martins Creek to Phillipsburg

**Sat., Aug. 31:** Delaware, Phillipsburg to Riegelsville

**Sun., Sept. 8:** Delaware, Kingwood to Bull's Island

**Sat., Sept. 28:** Delaware, Martins Creek to Phillipsburg

**Sun., Oct. 13:** Upper South Branch or Musconetcong

**Sat., Oct. 26:** Leaders' Choice

### SUNSET PADDLE ON ROUND VALLEY

**Session A:** Friday, June 7 **Session B:** Friday, July 12  
5:00 PM to 9:30 PM, meet at Arboretum, ages 8 through adult, \$30 per session

Treat yourself to a leisurely sunset paddle on Round Valley Reservoir. We'll meet at the Arboretum. Bring a flashlight and a jacket: it can get much cooler on the water when the sun goes down.

**OVERNIGHT CANOE TRIP (also Boy Scout Merit Badge),** See CAMPING TRIPS, opposite page).

### SCHEDULE YOUR OWN TRIP

We are happy to tailor a canoe trip to the needs of your group, school, club, charity, or service organization. A pond paddle makes a great birthday party! For questions or to be added to our canoe email list, contact Patrick Eckard at [peckard@co.hunterdon.nj.us](mailto:peckard@co.hunterdon.nj.us).

### PLANNING YOUR CANOE TRIP

Pre-register by the Wednesday before the trip. Please note: Due to water levels or other circumstances, leaders may choose an alternative river at any time. If we cancel the trip for any reason, we will call you as soon as we make the cancellation, but our trips run rain or shine! Dress in layers so you can adjust to changing temperatures. Durable old clothes are best, especially wool and polypropylene fleece in cool weather. Sneakers are recommended; no sandals, boots, or heavy shoes. Bring lunch (packed in waterproof container), lots of water, sunscreen, a rain jacket, a hat, eyeglass strap, etc. A complete change of clothing can be packed in a waterproof bag to be carried in your canoe or to be in the van for the trip's end. No alcoholic beverages. No pets are allowed, except for guide animals.



### EMPLOYMENT OPPORTUNITY CANOE INSTRUCTORS

Primary responsibilities are leading river trips for adults and children on weekends. Canoeing experience on moving water is encouraged and valid driver's license required. Preference will be given to candidates with formal training or American Canoe Association certification. Must live in New Jersey and hold an NJ Driver's License. Dates: April to October. Salary: \$12 per hour, hours as needed. For more information, contact Patrick Eckard, (908) 782-1158.

**Pre-registration required & children must be accompanied by an adult, unless otherwise noted**

## RECREATION PROGRAMS

### N.J. BOAT SAFETY CERTIFICATE CLASS

Saturday, June 8, 8:00 AM to 5:00 PM, Echo Hill, ages 13 through adult, \$60

An 8-hour boating course designed to educate boaters to the minimum skills needed to safely handle and operate a boat or personal watercraft. This course is taught by highly qualified U.S. Coast Guard Auxiliary Instructors who are also certified by the NJ State Police Marine Bureau. Topics covered include: Know Your Boat, Before You Get Underway, Navigating the Waterways, operating your Boat/PWC, Legal Requirements of Boating, Boating Emergencies: What to Do, Enjoying Water Sports with Your Boat, and also a review New Jersey specific laws and regulations. Whether you are a new boater or have been boating for many years, you may discover that you can still learn something new about boating safely. Successful completion of this course meets the New Jersey requirement to receive an NJ Boating Safety Certificate, which is required to operate a vessel in the State of New Jersey.

### CPR FOR THE COMMUNITY COURSE

(also Boy Scout Merit Badge), Wednesday, September 25

### FIRST AID FOR THE COMMUNITY

COURSE (also Boy Scout Merit Badge)

Wednesday, October 2



6:00 PM to 9:00 PM,  
Echo Hill, ages 12  
through adult, \$30 for  
each session (register  
for CPR and First Aid  
together for \$55)

If you have ever wanted to learn CPR and First Aid, this is the time. These courses are taught by an American Heart Association (AHA) instructor. You will learn Adult, Child, and Infant CPR, Choking, and First Aid, allowing you to help anyone of any age. *This is not a course for health care personnel.* Boy Scouts may obtain their merit badge by setting up an additional meeting with Patrick, peckard@co.hunterdon.nj.us.

*\*The American Heart Association strongly promotes knowledge and proficiency in CPR and instructional material for this purpose. Use of these materials in an education course does not represent course sponsorship by the American Heart Association. Any fees charged for such a course, except for a portion of fees needed for AHA course material, do not represent income to the Association.*

**ADULT ART** Instructor Lena Shiffman  
[www.lenashiffman.com](http://www.lenashiffman.com)

### THURSDAY EVENING ART STUDIO

Five Thursdays, August 1 to August 29, 6:30 PM to 9:00 PM, Arboretum, \$100 (materials not included) Don't think you can draw or paint, but would like to give it a try? "Everyone has talent, they just don't know it!" says art instructor and illustrator Lena Shiffman. Using a variety of subject matter, including still life subjects and photographs, Ms. Shiffman will work with students to improve their drawing and painting skills. Students may work in charcoal, pastels, oil, acrylic, or watercolor paints. *Students supply their own materials.* Beginners, please bring charcoal sticks and charcoal pencils, an eraser, and a medium sketch pad (14 x 18") to the first class. Material list will be supplied at the first class. Join us for a day or evening class of fun in a relaxed atmosphere; you will be amazed at what you can accomplish! *All ability levels welcome!*

### ART BOOT CAMP FOR ADULTS

Monday through Friday, August 26—30, 9:30 AM to 12:00 PM, Arboretum, \$100 (materials not included)

Calling all artists to join us for a week of art boot camp at the Arboretum. Spend five consecutive mornings in a fun and relaxed atmosphere creating with Lena Shiffman.

Use a variety of subject matter, including still life subjects and photographs, and some "plein air" if the weather permits. Ms. Shiffman will work with students to improve their drawing and painting skills. Students may work in charcoal, pastels, oil, acrylic, or watercolor paints. *Students supply their own materials.* Beginners, please bring charcoal sticks and charcoal pencils, an eraser, and a medium sketch pad (14 x 18") to the first class. You will be amazed at what you can accomplish in just one week! *All ability levels welcome!*



### FREE RECREATION WALKS

Wednesdays, 9:00 AM to 11:00 AM, all ages, free, please pre-register

**June 5:** Miquin Woods

326 Newport Road, Glen Gardner

**June 12:** Landsdown Trail

113 Lower Landsdown Road, Annandale

Meet at a park and take a guided walk. Fresh air, exercise with a twist of history. Easy to moderate.





**Pre-registration required & children must be accompanied by an adult, unless otherwise noted**

## **PHOTOGRAPHY** Instructor Jim Rimi

*Jim Rimi holds a BFA in photography and is an NJ-certified teacher of Art. Work includes a documentation of The Fulton Street Fish Market in Manhattan and New York Underground, a 10-year journey into the lives of the homeless, shelters, street people, and street musicians of New York City. All photography programs are for Digital SLR Manual Setting.*

### **PHOTOGRAPHIC SUNSET EVENING**

Tuesday, July 16, 6:30 PM to 8:30 PM, Deer Path Park, ages 16 through adult, \$40

Photographer Jim Rimi will teach you how to get a great shot of the sunset! Students will walk to a vantage point and wait for the right moment to take the perfect sunset photo. Bring your camera, a tripod if you have one, and a flashlight.

### **PHOTOGRAPHY IN THE PARKS WORKSHOP**

Sunday, July 7, Deer Path and/or Wednesday, September 18, Echo Hill, 2:00 PM to 5:00 PM, ages 16 through adult, \$55 per session

A 3-hour workshop that is designed for the photographer that already has a grasp of their camera. It is a perfect complement to the Beginning Photography Workshop. Concentrates on how to see like a photographer. Lighting, camera position, angle, proper use of lenses, focal length, depth of field, and shutter speed will be discussed. Students learn to be sensitive and aware of light and their surroundings. The group will discuss the makings of a great photograph and how to achieve it. Starts in a classroom environment, then goes out into the park with the knowledge just given. Jim will critique the photos taken. This is a fun and relaxed workshop combining nature and the art of photography. A tripod (if you have one) and a blank memory card dedicated for the class are recommended.

### **BEGINNING PHOTOGRAPHY WORKSHOP**

Sunday, August 4, 1:00 PM to 4:00 PM, Arboretum, ages 16 through adult, \$55

Students will learn how to use their cameras on the manual setting. Shutter speed, aperture, depth of field, lighting, use of lenses, and composition will be discussed. A hands-on approach in a laidback, no-pressure atmosphere, so learning is fun and enjoyable! Instructor Jim Rimi will be with the students in the field to assist and answer any questions. Students will then come back to the classroom for a group critique of their photos by Jim. A tripod (if you have one) and a blank memory card dedicated for the class are recommended.

## **HOMESCHOOL ENVIRONMENTAL SERIES**

Second Wednesday of each month, September 2019 to May 2020, 1:00 PM to 2:00 PM, Echo Hill, ages 5 to 12, \$30 per student for all 9 lessons

This series provides a terrific opportunity to meet with other local homeschooling families while your child learns about the natural world. Participants will explore a new topic each month and enjoy hands-on activities that foster science, math, language arts, and social skills. Program includes "homework" projects to complete after each session. Class limited to 15 participants.

## **16<sup>th</sup> TOUCH-A-TRUCK DAY**

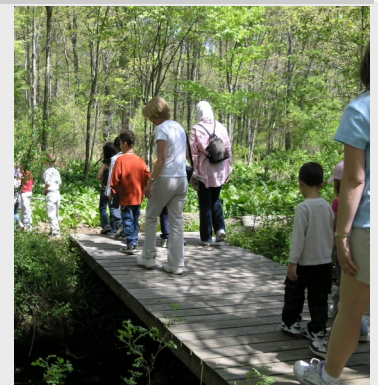


### **"A PARADE THAT STANDS STILL!"**

**Saturday, November 2,  
11:30 AM to 3:00 PM,  
Deer Path Park, for all ages!, free  
MARK YOUR CALENDER!**

## **PUBLIC LANDS DAY OPEN HOUSE CELEBRATION**

Saturday, September 28,  
10:00 AM to 2:00 PM,  
Arboretum, all ages.



**FREE fun for all!** Learn about what the Hunterdon County Division of Parks and Recreation is all about:

**YOUR** open spaces, park lands, park programs, and your friendly park staff! This year on Public Lands Day, join us at the Hunterdon County Arboretum to celebrate over 50 years of open space in the county. Activities will include learning about and seeing live animals, birding, guided walks, hands-on experiences, and more. Learn about opportunities to explore hiking, biking, horseback riding, fishing and cross-country skiing around the county.

Enjoy our open house and discover how to be a steward for our public lands.



**FAMILY & ADULT NATURE PROGRAMS****LICHEN WALK**

Tuesday, June 4, 6:00 PM to 8:00 PM,  
Arboretum, ages 12 through adult, \$5 per person,  
guest presenter Lichenologist Dennis Waters  
Lichens are all around us; on trees, on rocks, and on the ground. These organisms have a split personality, half plant and half fungus. Some are among the most robust and resilient organisms on the planet, while others are so sensitive that they can be wiped out by a whiff of air pollution. Take a short walk to learn what they are, how they work, and how to identify the common species. Bring lichens you have found to be identified. Meet Lichenologist Dennis Waters at garden gate.

**POISON IVY, SNAKES, & TICKS, OH MY!**

Tuesday, July 9, 7:00 PM to 8:30 PM, Arboretum, ages 10 through adult, \$8. Guest presenter Thomas Lurz. There's no need to let poisonous plants, venomous animals, or toxic fungi keep you out of the woods! Learn how to recognize and avoid various hazards in the natural world. We will discuss signs and symptoms, shock, and what to do if you are affected. This is a PowerPoint lecture, accompanied by specimens. Thomas Lurz recently retired from the Pennsylvania Department of Agriculture, where he worked on deadly and invasive insects. He is also an EMT instructor and has a vast knowledge of dangerous plants and animals, paleontology, minerals, and herptiles.

**FULL MOON HIKE**

Tuesday, July 16, 8:30 PM to 9:30 PM,  
Hoffman Park, ages 8 through adult  
(children must be accompanied by an adult), \$3  
Come explore the park during the night and see the moonlight reflecting off our pond! Under the light of a full moon, we will listen to summer insects and learn about the adaptations of nocturnal animals. We will also learn about the phases of the moon. Meet at the main parking area, 26 Baptist Church Road, Hampton

**WINEBERRY JAM MAKING**

Saturday, July 20, 1:00 PM to 3:30 PM, Echo Hill playground, 8 through adult, \$10 per person  
Japanese Wineberry is an invasive plant in the raspberry family. Its berries are smaller and less sweet than raspberries (but still delicious) and they peak during the third week of July. We should eat as many berries as possible from this ubiquitous invasive—so why not make some jam? Each participant will go home with a small jar. We will be picking berries, learning about edible wild plants, and processing the jam.

**SUMMER FLOWER WALK**

Saturday, August 3, 1:00 PM to 2:00 PM,  
Arboretum, ages 10 through adult, \$3  
Enjoy a walk at the Arboretum while Senior Park Naturalist Laura Bush points out flowers that bloom in August. We will focus on the meadows, where we will expect to see Common Milkweed, Goldenrod, Queen Anne's lace, Spotted Knapweed, asters, and more. We will also visit the ornamental gardens and wetland areas. We will also see pollinators like bees and butterflies, and perhaps other insects or animals utilizing the plants. Bring a camera if desired!

**MUSHROOM FORAY**

Sunday, August 18, 10:00 AM to 2:00 PM, Teetertown group parking area, all ages, free; no pre-registration! Join the New Jersey Mycological Association for a survey of mushroom species at Teetertown Preserve! From 10:00 AM to 12:00 PM, participants will split up into smaller teams to search the park for mushrooms and collect some samples. Those new to mushrooming will be paired with experienced identifiers. From about 12:00 to 2:00 PM, the Association will set up books at the group lean-to camping area and participants will work together to identify the mushrooms collected in the morning. Identified fungi are separated into an area with identification tag so everyone can take pictures if they wish. Feel free to join the NJMA for one or both portions of the day. Please bring a basket for carrying mushrooms and lunch if desired. Note that the foray will focus on diversity and identification of mushrooms; we will not be eating them. Meet at the Group Camping Parking area, 20 Pleasant Grove Road, Lebanon Township (use Glen Gardner for GPS). Overflow parking will be at the stone house, 30 Pleasant Grove Road. No pre-registration required; check the Association's website [njmyco.org](http://njmyco.org) for more information or for weather questions (NJMA will collect rain or shine).

**FAMILY FUN SCAVENGER HUNT**

Tuesday, August 20, 5:00 PM to 6:00 PM, Echo Hill, ages 4 and up, must be accompanied by adult, \$3 per child; adult attends for free  
Families will work together to solve a series of nature riddles around Echo Hill Park. Each family will receive a map to guide them to clues that will lead to tokens. The first to collect all their tokens wins! Upon completion of the hunt we will share what we have found and reward our winners.

**FAMILY & ADULT NATURE PROGRAMS****EVENING BAT WALK**

Wednesday, August 21, 7:00 PM to 9:00 PM, Echo Hill, Ages 8 through adult, \$3, Guest presenter MacKenzie Hall, NJ Division of Fish and Wildlife

Bats have a reputation as being spooky or even fearsome, but they are actually some of the most amazing and beneficial animals to people. Don't be scared... Join us for an evening bat program at Echo Hill on August 21. We'll learn all about these fascinating flying mammals, their importance to our communities, and work being done to conserve them here in the Garden State from NJ Division of Fish and Wildlife biologist MacKenzie Hall. After the slideshow, we'll head outside to watch for bats over the fields and pond at nightfall with the help of an acoustic bat detector.

**BUILD A BAT HOUSE WORKSHOP**

Tuesday, August 27, 7:00 PM to 8:30 PM, Echo Hill, ages 8 through adult, \$40 per box

Bats are beneficial for their pollination services, pest control, and also perform nightly displays of aerial acrobatics. One brown bat can eat over 1,000 mosquito-sized insects in one night! Learn a little bit about bats and then use the rest of our time to assemble the boxes together. Wood will be pre-cut and screws will be provided. Please bring your own Phillips screwdrivers. Limit one box per family.

**GRANDPARENT & ME NATURE WALK**

Sunday, September 8, 1:00 PM to 2:30 PM, Arboretum, ages 4 to 12 (children must be accompanied by adult), \$3 per child, accompanying adult attends for free. Grandparents have the opportunity for real quality time with their grandchildren by spending time in the outdoors. Away from phones, computers, and video games, the two generations are likely to have some great walks and talks. Come join Park Naturalist Debra Reed for a guided nature walk, exploring the outdoors and the interesting wildlife we see here at the Arboretum.

**LIFE LIST OF HUNTERDON COUNTY**

Saturday, September 14, 3:30 PM to 5:00 PM, Arboretum, ages 8 through adults, \$3 per person

Looking for a way to expand your knowledge of local flora and fauna? Join us using iNaturalist, a free program that runs as an app on smartphones (also accessible as a website). Take a picture and let the app identify it! We will identify and expand on a public digital list of things living in our county. This session will start inside at the Arboretum to learn how to use iNaturalist and how to

keep track of our findings as a project, "Life List of Hunterdon County." We will then head out into the park and begin adding observations in the app! Please be sure to bring your iNaturalist-compatible smartphone with the free app downloaded.

**DRAGON HUNT**

Wednesday, September 18, 5:30 PM to 7:00 PM, Echo Hill playground, ages 8 through adult, \$3 per person. Dragonflies can hover, dive, fly backwards, fly upside down, or pivot 360° using only three wingbeats. The largest flying insects of all time were dragonflies with a 28-inch wingspan, 320 million years ago. New Jersey has 182 species of dragonflies recorded. During the peak of dragonfly migration, let's get out to the park and see what we can find! We will be using binoculars (provided) to observe the dragonflies, and perhaps be able to catch some with hand nets. Feel free to bring a camera if desired. We will hope to submit some data to the Migratory Dragonfly Partnership.

**BEGINNER'S MUSHROOM WALK**

Monday, September 23, 5:30 PM to 7:00 PM, Arboretum, ages 10 through adult, \$8 per person, guest presenter Marion Barry. Have you ever walked through the woods and parks of Hunterdon County and found yourself wondering about the mushrooms and fungi you have seen growing? Then join us for a walk with Marion Barry, a member of the NJ Mycological Association and an active mushrooer for the past thirty years. She will introduce us to the world of fungi and take us on a mushroom walk around the Arboretum to see which mushrooms are growing around this area.

**TWILIGHT AUTUMN EQUINOX HIKE**

Monday, September 23, 6:30 PM to 7:30 PM, Crystal Springs, directions below, all ages, \$3. The Fall Equinox means that the first day of autumn has finally arrived. Come out and watch the sunset as we walk in the park. Take some time to celebrate the beautiful colors that surround you in nature. Join Park Naturalist Debra Reed to see what is happening in nature during this transition from summer to fall, and from daylight to darkness. **DIRECTIONS:** The parking lot is located down the dirt road, go into the neighborhood with a small blue sign on the left that reads "51-55", off Califon Road, Long Valley 07853 (just over the border into Washington Township, Morris County). Continue straight to the dirt road.

**Pre-registration required & children must be accompanied by an adult, unless otherwise noted**

## TOT WALKS

9:30 AM to 10:30 AM, Echo Hill, ages 2 to 3 with adult, each walk \$3 per child; accompanying adult attends for free. Join Senior Park Naturalist Laura Bush on these early adventures to discover nature at your local park! Leave the strollers behind as we take a walk outside to see plants and animals around us. We will use our senses to focus on each theme. Each one-hour program will include a walk and an indoor time of a story and craft. We offer three walks of the same theme in a row; please select Session A, B, or C.

### INSECTS

Session A: Thursday, September 12, 9:30 AM to 10:30 AM

Session B: Friday, September 13, 9:30 AM to 10:30 AM

Session C: Friday, September 13, 11:00 AM to 12:00 PM

### LEAVES

Session A: Thursday, October 17, 9:30 AM to 10:30 AM

Session B: Friday, October 18, 9:30 AM to 10:30 AM

Session C: Friday, October 18, 11:00 AM to 12:00 PM

### ANIMAL HOMES

Session A: Thursday, November 14, 9:30 AM to 10:30 AM

Session B: Friday, November 15, 9:30 AM to 10:30 AM

Session C: Friday, November 15, 11:00 AM to 12:00 PM

## FALL NATURE CLUBS FOR KIDS

Nature clubs will introduce your child to many exciting nature topics. Park Naturalist Debra Reed will guide the children during hikes as they discover the diverse field, forest, and pond habitats at Echo Hill. Other hands-on activities include science experiments, field games, and take-home craft projects. The children will be able to observe the

subtle changes from week to week as we progress through the season. Through our explorations, children will also hone their attention to detail as we observe the colors, shapes, textures, and sounds of the natural world. This is a drop-off program and children must be self-sufficient in the bathroom. Please be sure to dress your child for the outdoors so that the whole group will be able to enjoy our lessons fully. We strongly recommend old clothes and sneakers/boots that can get dirty. Nature Clubs meet rain or shine. In inclement weather, we shorten our outdoor adventures in order to spend more time inside. Limited to ten children to ensure a quality experience for the participants.

Eight Tuesdays, September 10 to October 29, Echo Hill, \$90 for all 8 lessons

Session A: 9:30 AM to 11:00 AM, ages 3 to 5 years

Session B: 1:00 PM to 2:30 PM, 3 to 5 years

Session C: 4:00 PM to 5:30 PM, kindergarten to 3<sup>rd</sup> graders



## GROUP PROGRAMS



### NEW FOR 2019

*Group requestable nature programs are now available in the summer as well as during the school year! Call us and ask for Laura to set up a program for your summer camp or recreation program!*

cost is \$30 on-site, \$55 off-site, \$80 out-of-county

### NATURE PROGRAMS

**SEASONAL NATURE WALK**, All ages, 1 hr, \$20, 25 max

**ANIMAL CLUES**, Grade K+, 1 hr, 25 max

**AMAZING ADAPTATIONS**, Grade K+, 1-1.5 hrs, 25 max

**INCREDIBLE INSECTS**, Grade 1+, 1-1.5 hrs, 25 max

**PLANT STUDY**, Grade 1+, 1-1.5 hrs, 25 max

**BIRDING**, Grade 3+, 1-1.5 hrs, 25 max

**POND/STREAM STUDY**, Grade 1+, 1-1.5 hrs, 25 max

**PLANT STUDY**, Grade 1+, 1-1.5 hrs, 25 max

**ANIMAL STRATEGIES**, All Ages, 1 hr, 25 max

**REPTILES ALIVE**, All Ages, 1 hr, 25 max

**ROCKS AND MINERALS**, Grade 3+, 1 hr, 20 max

**INTRODUCTION TO BIRDING**, Grade 3+, 1 hr, 25 max

**SKULL WORKSHOP**, Grade 2+, 1 hr, 25 max

**SCAT & TRACKS WORKSHOP**, Grade 3+, 1 hr, 25 max

**WINGS & FEATHERS WORKSHOP**, Grade 3+, 1 hr, 25 max

**NESTS & EGGS**, Grade K+, 1 hr, 25 max

**MAPLE SUGAR TO GO**, All ages, 1 hr, 25 max, \$50 (off-site)

**PHYSICS IN NATURE**, Grade 3+, 1-1.5 hrs, 25 max

**RECYCLING**, Grade 1+, 1 hr, 25 max

**WATER ISSUES**, Grade 1+, 1 hr, 25 max

**COMPOSTING FOR THE HOME**, Grade 3+, 1 hr, 25 max



### LECTURES

**BATTY ABOUT BATS**, Grade 3+, 1 hr

**BIRDS OF HUNTERDON**, Grade 3+, 1 hr

**BUTTERFLIES & MOTHS**, Grade 3+, 1 hr

**CO-EXISTING WITH COYOTES**, Grade 3+, 1 hr

**HERPTILES OF HUNTERDON**, Grade 3+, 1 hr

**MAMMALS OF HUNTERDON**, Grade 3+, 1 hr

**MUSHROOMS & MOLDS**, Grade 3+, 1 hr

**NJ BLACK BEAR**, Grade 3+, 1 hr

**OWLS OF HUNTERDON**, Grade 3+, 1 hr

**PLANETS OF THE INNER SOLAR SYSTEM**, Grade 3+, 1 hr

**PLANETS OF THE OUTER SOLAR SYSTEM**, Grade 3+, 1 hr

**RAPTORS OF HUNTERDON**, Grade 3+, 1 hr

**TREES OF HUNTERDON**, Grade 3+, 1 hr

**WATERFOWL OF HUNTERDON**, Grade 3+, 1 hr

**WILDFLOWER FOLKLORE**, Grade 3+, 1 hr

**WILDLIFE OF HUNTERDON**, Grade 3+, 1 hr

**WOODPECKERS OF HUNTERDON**, Grade 3+, 1 hr

**ATTRACTING BIRDS TO YOUR YARD**, Adults, 1 hr

**HUNTERDON PARKS & RECREATION**, Adults, 1 hr, free



*Group Programs brochure on our website or pick one up at the Arboretum. Call us to register. We also tailor programs to scouts and homeschool groups.*



## BIRDING TRIPS

Bird trips are led by Tom Sheppard, Chief Park Naturalist. Tom and his colleagues focus on helping all participants learn about the birds, and teach them about interesting characteristics of each species. They will also point out other natural history information about the locations. Please pack a lunch, as stops are not guaranteed. If you have your own binoculars or spotting scope, please bring them. Binoculars are also available for loan. Trips are designed for adults, but mature youths under 18 can contact Tom for approval. Please dress appropriately for the weather. Transport is by County Park vans. All trips leave from and return to the County Arboretum. Trips are recommended for any birder at all levels of ability, unless otherwise stated.

### BREEDING BIRDS OF HUNTERDON COUNTY

Sunday, July 7, 6:00 AM to Noon, \$25

Hunterdon has a rich variety of nesting birds. Last year we went through the western edge of the county. Prior to this trip, we will scout some of the best spots in the County, such as Hoffman Park, Spruce Run Reservoir, and Voorhees State Park. However, the route of the trip may change up to the last moment depending on reports and findings. We will hope to see Bobolinks, a variety of warblers, and more. Two miles of hiking may be required.

### BRIGANTINE NATIONAL WILDLIFE REFUGE

Saturday, August 10, 7:30 AM to 4:30 PM, \$30

Brigantine National Wildlife Refuge is a classic for us in the winter, but some of its major sightings occur in the summer season. Join us on this trek to this refuge as we look for different species of terns, herons, sandpipers, and more. Participants need to be prepared for the “greenheads.” Loose fitting, light colored, and long sleeved clothing is recommended.

### HAWK MOUNTAIN

Sunday, September 15,  
7:00 AM to 5:00 PM, \$40  
(covers entrance fee to Hawk Mountain)

Hawk Mountain is part of the Kittatinny Ridge, and along with other preserved lands, it makes up one of the largest protected areas of contiguous forest in southeastern Pennsylvania. Hawk Mountain is known for its thrilling migration of hawks, eagles, and falcons. Mid-September is known for the movements of the Broad-winged Hawks. There is a moderate hike to reach the observation location.



### BIRDING THE DC JUNGLE

Saturday-Sunday, October 19-20, 6:00 AM on Saturday to 9:00 PM on Sunday, \$175 double occupancy / \$225 single occupancy (must enroll by 9/15)

Note: Limit of 8 people on this trip

This overnight excursion will take participants down to our Nation's Capital for a bit of urban birding. We will focus on the National Parks surrounded by the concrete sea of development. On our way down, we will make a stop at Conowingo Dam and see if there are any eagles flying around. From there we will head to the National Arboretum and enjoy our packed lunch amongst the scenery. In the afternoon, we will move over to the Kenilworth Aquatic Gardens. It is then off to our hotel and dinner. Sunday morning will be a stop and scan at Haines Point in the Potomac River, before we move upstream to Roosevelt Island. We will make a stop for lunch on our way to the last birding spot in Virginia – Great Falls. Here we will look for species missing on our list and enjoy the vista of the falls. We will then head for home with a dinner stop in Havre De Grace at a restaurant that was a tradition for Tom and his mother on vacations to DC. A fair amount of walking will be involved on this trip. Roosevelt Island can only be accessed by a pedestrian bridge. NOTE... this will be a **fast-paced trip**, and while participants do not have to be expert birders, they should understand basic birding skills. Therefore, participants need to have been on two previous birding excursions. **Limited seating is available;** participants need to limit themselves to one crushable bag for their personal belongings (not counting scopes or binoculars.) Participants should pack a lunch for Saturday and bring money for the other meals.

### THURSDAY MORNING BIRDING WALKS

7:00 AM to 8:30 AM	9/19	South Branch WMA
	9/26	Hoffman
	10/3	Deer Path – Soccer Lot
	10/10	Arboretum
7:30 AM to 9:00 AM	10/17	Bernadette Morales/Uplands
	10/24	Sunnyside Picnic Area
	10/31	Echo Hill

Adults, Free, pre-registration is required.

Take an early morning stroll with the interpretive staff of the County Parks Division as we look for the fall migrants and local birds of the county. We will use both eyes and ears to determine which birds are around us. Binoculars are available to borrow.

## VAN TRIPS

### LUNA PARC OPEN HOUSE & PETERS VALLEY SCHOOL OF CRAFTS

Wednesday, June 5, 8:00 AM to 5:30 PM, Arboretum, adults (teens accompanied by an adult are welcome), \$23 plus a donation of your choice for both locations. Intriguing, zany, colorful, folk art, mosaic eye candy, and fantasy land are a few of the words that come to mind when thinking about this project in the works. Luna Parc is the unique private home and workspace of its creator, artist Ricky Boscarino. From the road the bejeweled gate and wooden bridge adorned with old glass insulators beckons you towards the yard full of brilliantly colored sculptures, wall and spires made of repurposed stuff. You will then spy the license plate covered gingerbread house full of treasure-filled rooms lined in yard sticks and mosaic tile creations. Ricky's creative jewelry and art will be on display for sale. Donations are welcome and can be in the form of money, license plates, wooden yard sticks, bowling balls, or Iris and Peony roots. Next we will visit Peters Valley School of Crafts for a tour and visit the Retail Gallery. This school promotes the making of fine crafts, a kind of exploration, which relies on an integration of heart, head, and hands. **BRING A BAG LUNCH** and drink, and wear sturdy shoes as the terrain can be very challenging. We will be travelling in a Park van 1.5 hours each way.

### GLENCAIRN LANDMARKS IN LIGHT... MUSEUM, ESTATE AND CATHEDRAL

Tuesday, June 25, 7:00 PM to 12:00 AM (midnight), Arboretum, \$20

Enjoy quiet reflection as you explore the grounds of the Bryn Athyn Historic District in lights. Experience the beautiful cathedral, medieval style castle, and an estate.

**Glencairn Museum/Castle:** Admission is free to the first floor, including exhibitions, an orientation video, and a free cell phone audio tour; elevator rides to the tower are \$5/person. **Cairnwood Estate:** Visit, for free, the Garden House, including exhibitions and an orientation video; self-guided Cairnwood house tours will be an additional fee of \$5 per person.

**Bryn Athyn Cathedral:** This spectacular medieval-style cathedral is a must see with many handcrafted creations of stone, wood, stained glass, and iron. A free cell phone audio tour of the building and gardens is available. And don't forget to visit the beautiful gardens! Photography for private use is permitted. No flash, tripods, selfie-sticks, or videography.

### SANDY HOOK SALT MARSH TOUR & BEACH DAY

Friday, July 19, 8:30 AM to 5:00 PM, Arboretum, ages 8 through adult, \$45 per person  
Meet Senior Park Naturalist



Laura Bush at the Arboretum where she will drive you to Sandy Hook in a County van. As a group, we will meet an instructor from NJ Sea Grant Consortium to spend two hours exploring the most productive ecosystem on earth—the salt marsh. We will don waders and use nets to seine for fish, shrimp, and crabs. We will also collect shells and go on a hike in this special environment. After the program, we will have about three hours for lunch and swimming at a guarded beach. Please bring water and wear closed-toed shoes for the salt marsh portion of the program. A changing area and snack stand are available at the beach, but you can also bring your own food.



### OCEAN GROVE HOUSE TOUR

Friday, August 9, 8:00 AM to 6:30 PM (**rain or shine**), Arboretum, adults, \$25, plus \$35 tour fee to be paid the day of the trip. (lunch is not included in the price)

Outstanding renovations, ocean views, and fantastic kitchens are featured on this acclaimed house tour. To celebrate our 51st anniversary, we will feature some unique homes found in Ocean Grove. The all-day, **self-guided tour** includes historic homes as well as a tent home, an inn, and other historic buildings. You will receive a booklet that includes the walking tour route/map and a blurb about each house. Most homes have stairs and are not generally accessible for those with mobility impairment. This trip goes **rain or shine**. You should bring a snack for the hour and a half (each direction) van ride and a bottle of water for the walking tour. For lunch you can go to your choice of a restaurant or join us, at a group of separate tables, at the Starving Artist Restaurant. If being on your feet all day is a problem, this will not be the trip for you!

## VAN TRIPS

**CANAL'S RICH HISTORY & CANAL BOAT RIDE**

Sunday, August 11, 9:00 AM to 5:00 PM, Arboretum, adults, \$23 plus a \$16 entry fee paid by you the day of the trip.

Come and explore the rich history of the Morris and the Lehigh Canals. We will visit three museums and a historic inclined plane, and take a ride on Pennsylvania's only mule-drawn canal boat attraction.

At the Inclined Plane, 9 West, we will discover how these planes (the canal implemented 23 of them and 23 lift locks) overcame an elevation change of almost 1,700 feet, an unbroken world record. The tender's house, turbine chamber, and tailrace tunnel are still in place making this site one of the best remaining examples of these engineering marvels. Bread Lock Park includes a learning center which houses detailed models and displays of Lock 7 West, ("The Bread Lock"), the inclined plane in Bowerstown, the Shippen Manor, and Oxford Furnace, all located in NJ. There are also many artifacts to view from this bygone era. The third museum, the National Canal Museum, interprets the history, science, and technology of canal construction and navigation, through exhibits and hands-on activities. The locktender's house will also be open with a guide who will enlighten us on the importance of the locktenders and their families. Behind the house is a perennial flower garden to enjoy while taking in the beautiful views of the Lehigh Canal. **Please pack a lunch and drink and wear sturdy footwear.** This trip will not run if hard rain is in the forecast, this decision would be decided on Saturday, August 10 and you will be notified via the phone number from your Registration Form.

**LYNDHURST MANSION**

Thursday, September 5, 8:00 AM to 5:00 PM, Arboretum, adult, \$24, plus \$28 tour fee to be paid by you the day of the trip (bring a bagged lunch)

Lyndhurst, also known as the Jay Gould estate, is a Gothic Revival country house that sits in its own 67-acre park beside the Hudson River in Tarrytown, New York. The house was designated a National Historic Landmark in 1966. You will see the majestic vestibule and entrance hall, reception room, parlor, library, cabinet room, Jay Gould's private office, and the sumptuous Victorian dining room. The second-floor centers around the Grand Picture Gallery hung with its original and varied collection of European paintings. Impressive Tiffany and La Farge stained glass windows and decorative wall paintings adorn the gallery and adjacent bedrooms. Enjoy the charming, romantic Hudson River landscape and the stunning gardens. We will also visit Sunnyside... America's "Founding Father of Literature" who created a romantic, picturesque estate nestled along the Hudson riverbank. The enchanted landscape of Washington Irving's much-loved Sunnyside has been charming guests for generations. His characters, from the Headless Horseman to Rip Van Winkle, are global icons, and Irving's legacy lives on at his whimsical estate. Bring a bagged lunch.

**VALLEY FORGE TOUR**

Thursday, September 12, 8:30 AM to 3:30 PM, Arboretum, adults, \$25

Join Chief Park Naturalist Tom Sheppard for a trip to Valley Forge, the birthplace and almost the deathplace of Washington's Continental Army. Once onsite, we will have a private guide through the park and see multiple sites within the park, including the cabins that sheltered troops through the devastating winter of 1777, Washington's Headquarters, and the von Steuben Memorial. It would be the army that Washington and von Steuben created here that would go on and fight the British to a draw at Monmouth and eventually win the day at Yorktown.



## SQUARE DANCING with the FLUTTERWHEELS

### OPEN HOUSE... DARE TO DANCE SQUARE

Sunday, September 8, 1:30 PM to 4:00 PM, Echo Hill, adults/teens, \$3 admission, no pre-registration required. Co-sponsored by the Hunterdon Flutterwheels Square Dance Club and the Hunterdon County Division of Parks & Recreation. Caller Mary Moody will be on hand to provide an enjoyable afternoon of brisk music and lively square dancing. Come and enjoy the atmosphere of Echo Hill Lodge's fireplace, wagon wheel lighting, fresh country air, and wonderful wooden floor, while getting an introduction to what modern square dancing is all about. Refreshments will be provided. Can't make September 8? Join us for a preview on Tuesday, September 10 from 7:00 to 9:00 PM.

### SQUARE DANCE LESSONS

#### BASIC

12 Tuesdays, September 10, 2019 to December 10, 2019 (no class 10/8, 11/26)

#### MAINSTREAM (Prerequisite is BASIC)

12 Tuesdays, January 7, 2020 to March 24, 2020

#### PLUS (Prerequisite is MAINSTREAM)

12 Wednesdays, February 19, 2020 to May 13, 2020 (no class 4/8)

7:00 PM to 9:00 PM, Echo Hill, adults/teens, \$60 per 12-week session, pre-registration required!

Square dancing is an official dance of New Jersey. It gives people the opportunity to make new friends while getting low-impact aerobic exercise at the same time. It is a great way to keep your heart healthy and your mind sharp. The instructor, Mary Moody, has taught hundreds of people to square dance in an enjoyable, fun-filled setting. She stresses repetition and review, building from easier to more complex moves for ease of learning. Students who have completed Basic lessons may dance at special area dances. Students who complete both Basic and Mainstream lessons may dance at clubs around the world, including bi-weekly Friday night Hunterdon Flutterwheels dances at Echo Hill Park. After becoming proficient in Mainstream you are ready for lessons in the next square dance program – Plus – with instructor Mary Moody.



### DISCOUNT AMUSEMENT PARK TICKETS

In cooperation with the New Jersey Recreation & Park Association, the Hunterdon County Division of Parks & Recreation will offer discount tickets to the following amusement parks. Tickets are available at the Hunterdon County Arboretum, located at 1020 Route 31, Lebanon.

#### Amusement Park    Gate Price    Discount Ticket

##### **Dorney Park & Wildwater Kingdom**

Adult.....\$61.95.....\$46.00

##### **Hershey Park**

Adult (9 to 54 years).....\$69.80.....\$57.00

##### **Six Flags Great Adventure**

Adult Theme Park & Safari.....\$88.49.....\$47.00

Parking Pass .....\$25.00.....\$22.50

**Philadelphia Zoo**.....\$24.00.....\$21.00

Child under 2 years: free

**Tickets can be purchased by check or cash. To confirm availability, call (908) 782-1158. Tickets are non-refundable.**

### BOOKMOBILE STOP AT THE ARBORETUM

Have you visited the Hunterdon County Library Bookmobile lately? Beginning June 4, the Bookmobile will be at the Hunterdon County Arboretum (1020 Route 31 north, Lebanon, Clinton Twp.) on Tuesdays from 10:00 AM to 12:00 PM. Check out the latest books and magazines, get a library card, or learn about eBooks. Watch for children's events and the Summer Reading Club coming later this summer. Check out the library's website [www.hclibrary.us](http://www.hclibrary.us) for updates, events, and all bookmobile stops and locations.



**Pre-registration required & children must be accompanied by an adult, unless otherwise noted**



### VISITOR SERVICES STAFF

Laura Bush: lkroon@co.hunterdon.nj.us (back left)  
 Liz Fulmer: lfulmer@co.hunterdon.nj.us (back middle)  
 Debra Reed: dreed@co.hunterdon.nj.us (back right)  
 Tom Sheppard: tsheppard@co.hunterdon.nj.us (front left)  
 Patrick Eckard: peckard@co.hunterdon.nj.us (front right)

### AFFILIATED ORGANIZATIONS

**ARC OF HUNTERDON COUNTY** archhunterdon.org

**DELAWARE VALLEY DIVISION OF AMERICAN CANOE ASSOCIATION** dvdaca.org

**HUNTERDON COUNTY CANOE CLUB**  
 hunterdoncountycanoeclub.org

**HUNTERDON HIKING CLUB** hunterdonhikingclub.org

**NJ BEEKEEPERS ASSOCIATION** nwba.njbeekeepers.org

**TRAVIS MANION BATTALION, US SEA CADET CORPS OF HUNTERDON COUNTY** travismanionbattalion.org

**HUNTERDON FLUTTERWHEELS SQUARE DANCE CLUB** hunterdonflutterwheels.njdsa.org. Check the website for scheduled square dance lessons!



### THE COURSE YOU'LL CALL HOME

Heron Glen Golf Course is one of New Jersey's finest public golf facilities. The course offers 18 holes of championship golf, a practice facility, golf associations, leagues, lessons, clinics, and juniors camps for all skill levels.

We are happy to announce the opening of our New Clubhouse! The 6,600 square foot clubhouse is surrounded by stunning views and sunsets. It features a full-service restaurant, a double-sided fireplace, patio dining, and a private room for events. We excitedly invite you to "The Course You'll Call Home."

Heron Glen is located at 110 Route 202, Ringoes, NJ. Contact the pro shop at (908) 806-6804 to book your tee time now or visit <https://www.herronglen.com>.

## HUNTERDON COUNTY DIVISION OF PARKS & RECREATION

### OFFICE HOURS

Monday to Friday: 8:00 AM to 4:30 PM

Location: 1020 Route 31, Lebanon (Clinton Township)

**PHONE:** (908) 782-1158

**WEBSITE:** [www.co.hunterdon.nj.us](http://www.co.hunterdon.nj.us) ("Parks & Recreation")  
 Like "Hunterdon County Parks" on Facebook

### MISSION STATEMENT

The Hunterdon County Division of Parks and Recreation is dedicated to preserving open space and natural resources, providing safe parks and facilities, and offering educational and recreational opportunities, all contributing to an enhanced quality of life for present and future generations.

### ACCOMMODATION STATEMENT

The Hunterdon County Division of Parks and Recreation welcomes all individuals to participate and enjoy our parks, facilities, and recreational programs. Reasonable accommodations, individual adaptations, and support will be provided for persons of all abilities to encourage everyone to benefit equally from their choice of leisure activities. Please notify us if you need special accommodations either at the time of registration or at least two weeks prior to program attendance or facility use. Each request will be assessed individually.

### RESERVABLE FACILITIES

**ECHO HILL:** Main Lodge, Multi-Purpose Room, & Group Camping Site

**ARBORETUM:** Two Gazebos & Meeting Room

**DEER PATH PARK:** Two Pavilions, Gazebo, & Softball Field

**TEETERTOWN PRESERVE:** Group & Public Camping Sites

**COURT STREET PARK:** Gazebo/Bandstand

**SOUTH COUNTY PARK:** Open & Enclosed Barns for Fairs

**To reserve a facility, contact the park office.**

**For information and a map of each park, contact the office or download them from our website (see above).**



### PROGRAM REGISTRATION INFORMATION

Fill out the form on the last page of this brochure. OR visit our website for a registration form.

Mail your completed registration form with payment to:  
 Hunterdon County Division of Parks & Recreation  
 P.O. Box 2900, Flemington, NJ 08822-2900

OR... Drop off your form and payment at the Arboretum, 1020 State Highway 31 North, Lebanon, NJ 08833. After hours, there is a door slot for your convenience (**exact cash or check only**).

### CANCELLATION POLICIES:

If we cancel a program, you will be notified by phone and given the option of a credit or a full refund. Programs are designed for all types of weather and participants should dress appropriately. Cancellations by participants are subject to a 30% service charge. Cancellations must be in writing, and cancellations made less than one week prior to program will **NOT** receive a refund.

For more detailed program information, visit our website at: [www.co.hunterdon.nj.us](http://www.co.hunterdon.nj.us) (click on "Parks & Recreation").

Pre-registration required &amp; children must be accompanied by an adult, unless otherwise noted



## HUNTERDON COUNTY DIVISION OF PARKS AND RECREATION PROGRAM REGISTRATION FORM

Office Location: 1020 State Route 31, Lebanon  
Mailing Address: PO Box 2900, Flemington, New Jersey 08822-2900  
Phone: (908) 782-1158 \* Fax: (908) 806-4057



PARTICIPANT(S) \_\_\_\_\_ RECEIPT # \_\_\_\_\_

ADDRESS \_\_\_\_\_

PHONE (day) \_\_\_\_\_ (eve) \_\_\_\_\_ (cell) \_\_\_\_\_

EMAIL ADDRESS \_\_\_\_\_ ☐ CHECK TO BE ADDED TO OUR EMAIL LISTEMERGENCY CONTACT \_\_\_\_\_ PHONE (day) \_\_\_\_\_ (eve/cell) \_\_\_\_\_  
(other than parent or guardian)

PROGRAM: \_\_\_\_\_ DATE: \_\_\_\_\_ LOCATION \_\_\_\_\_ TIME: \_\_\_\_\_ FEE: \_\_\_\_\_

PROGRAM: \_\_\_\_\_ DATE: \_\_\_\_\_ LOCATION \_\_\_\_\_ TIME: \_\_\_\_\_ FEE: \_\_\_\_\_

PROGRAM: \_\_\_\_\_ DATE: \_\_\_\_\_ LOCATION \_\_\_\_\_ TIME: \_\_\_\_\_ FEE: \_\_\_\_\_

PROGRAM: \_\_\_\_\_ DATE: \_\_\_\_\_ LOCATION \_\_\_\_\_ TIME: \_\_\_\_\_ FEE: \_\_\_\_\_

PROGRAM: \_\_\_\_\_ DATE: \_\_\_\_\_ LOCATION \_\_\_\_\_ TIME: \_\_\_\_\_ FEE: \_\_\_\_\_

TOTAL FEE \$ \_\_\_\_\_ Make check payable to "Hunterdon County Parks". Fees are used to offset the cost of the program.

**Requests for refunds must be made in writing and are subject to a 30% service charge. Cancellations made less than one week prior to program will NOT receive a refund.**

NOTES: \_\_\_\_\_

IF THE PARTICIPANT IS UNDER 18 PLEASE PROVIDE: NAME _____ AGE _____ GRADE _____
NAME _____ AGE _____ GRADE _____

NAME OF PARENT OR GUARDIAN (PLEASE PRINT): \_\_\_\_\_

**IMPORTANT—PLEASE READ THE FOLLOWING STATEMENT:**

I hereby waive and release all rights and claims for damages against the County of Hunterdon and its employees and agents for all injuries, which may be sustained, by the herein named minor or myself while participating in the program listed above. I understand the content of the program and the risks of personal injury therein. I also give my permission for employees of the County and the Hunterdon Medical Center (or closest medical facility to the activity site) to admit me or my child for EMERGENCY medical treatment that would become necessary as a result of a medical emergency during this program. **I also give permission to the County to make noncommercial use of any activity photographs of my child or myself.** Any information provided will be treated with confidentiality and will allow the County to better serve individuals attending programs.

**ACCESSIBILITY STATEMENT:** It is the policy of the County to provide reasonable accommodations to persons with disabilities upon advance notice of need. Persons requiring accommodations should make request at least 2 weeks prior to program attendance.

***You may withhold this data, but you might not receive appropriate accommodations, without advance notice.***

DOES PARTICIPANT TAKE ANY MEDICATION(S) Yes \_\_\_\_\_ No \_\_\_\_\_ If so, what? \_\_\_\_\_

DOES PARTICIPANT HAVE ANY MEDICAL CONDITIONS OF WHICH THE STAFF SHOULD BE AWARE?

(Please Circle: Attention Deficit/Hyperactivity Disorder, Epilepsy, Diabetes, Asthma, Dietary Restrictions, Oppositional Defiant Disorder, etc.) Yes \_\_\_\_\_ No \_\_\_\_\_ Other \_\_\_\_\_

DOES PARTICIPANT REQUIRE ANY ACCOMMODATION FOR A DISABILITY? Yes \_\_\_\_\_ No \_\_\_\_\_

DOES PARTICIPANT HAVE ANY ALLERGIES? Yes \_\_\_\_\_ No \_\_\_\_\_ If so, please explain \_\_\_\_\_

DOES PARTICIPANT CARRY AN EpiPen? Yes \_\_\_\_\_ No \_\_\_\_\_

NOTES: \_\_\_\_\_

SIGNATURE OF PARTICIPANT(S) \_\_\_\_\_ DATE \_\_\_\_\_

(Parent/Guardian if under 18 yrs. of age)