



## Message from School Nurses

November 30, 2020

Dear Parents and Families:

Hunterdon County has moved into the **High Covid Activity (Orange)**. This changes the exclusion criteria for in person attendance.

### *What this means for you:*

**NEW!!!** COVID screening is to be completed on the days of in person instruction. Any symptoms that are COVID-19 compatible must be reported to the office on days when the child is NOT in school due to the A/B rotation.

- Call attendance line for any absence or switch to virtual including a reason
- Report any symptoms
- Two or more symptoms and your child stays home
- Close contact with an individual with COVID-19 symptoms will be excluded for 14 days. **If the ill individual tests negative for COVID-19, the close contacts may return to school when proof of the ill individual's negative test has been provided.**

Here is the Information to review or answer any questions:

**Symptom Based Exclusion:** Parents should not send students to school when sick. The daily pre-screening form is mandatory and must be completed by 7:00 am for HBS/RMS and by 8:00 am for TBS/WHS. **Symptomatic individuals must quarantine for 10 days from onset of COVID like symptoms. If you wish to return to school prior to the 10-day period of isolation, we will require a negative COVID-19 test to be provided to the health office.**

For school settings, **NJDOH recommends** that students and staff with the following symptoms be promptly isolated from others and excluded from school.

- At least two of the following symptoms: fever (measure or subjective), chills, rigors (shivers), myalgia (muscle aches), headache, sore throat, nausea or vomiting, diarrhea, fatigue, congestion or runny nose;

OR

- At least one of the following symptoms: cough, shortness of breath, difficulty breathing, new olfactory disorder, new taste disorder.

If you wish to return to school prior to the 10-day period of isolation, we will require a negative COVID-19 test or a diagnosis other than COVID.

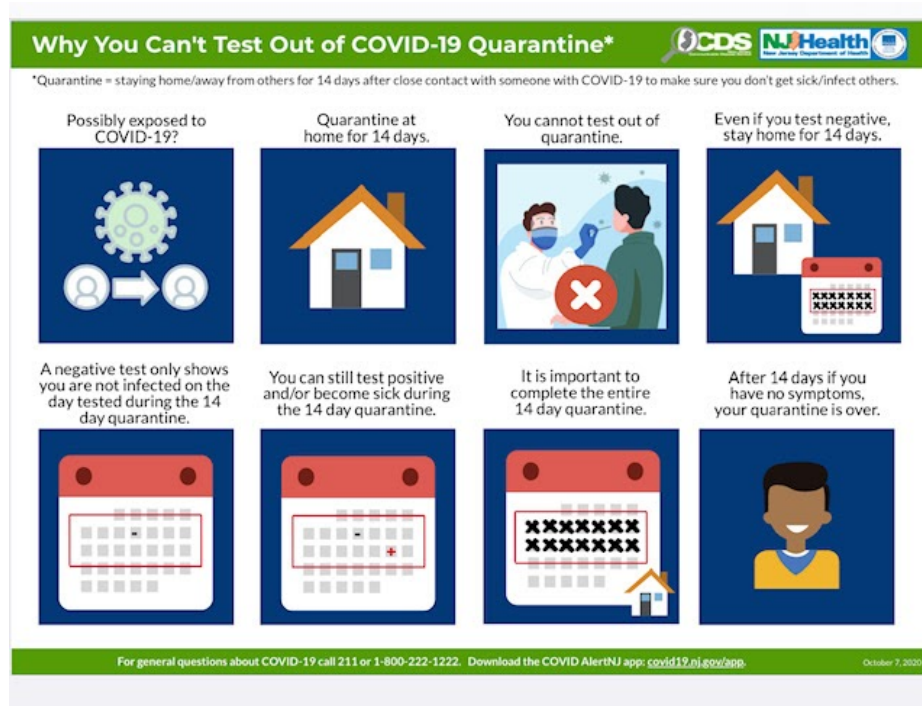
Lastly, please see the attached new infographic explaining that those who are close contacts and need to quarantine cannot “test out” of quarantine. If a student is exposed or travels to a high-risk area and needs to quarantine for two weeks, obtains testing and it comes back negative, this student still needs to finish the 2-week quarantine period. Testing negative in a quarantine period does not negate the need to quarantine.

The **NJ Travel Advisory** is strongly discouraging any non-essential travel at this time to any state on the advisory list. Individuals traveling to states on the advisory list are advised to self-quarantine for 14 days. The district will be enforcing the 14-day quarantine for travel to a restricted location. This includes travel by train, bus, car, plane and any other method of transportation. This list is updated frequently. To view the list, please [Click here](#).

Here's the NJ211 info: <https://www.nj211.org/coronavirus-covid-19>

To access the Hunterdon County COVID Dashboard, please [Hunterdon Dashboard](#).

**Thank you in advance,  
The Readington Township School Nurses**



To access the COVID-19 Activity Level Report, please [Weekly reports](#)

Week ending 11/21/2020: [COVID Report](#)